

Datasheet for ABIN2855575
anti-LIG3 antibody (C-Term)

3 Images

1 Publication

[Go to Product page](#)

Overview

Quantity:	100 µL
Target:	LIG3
Binding Specificity:	C-Term
Reactivity:	Human
Host:	Rabbit
Clonality:	Polyclonal
Conjugate:	This LIG3 antibody is un-conjugated
Application:	Western Blotting (WB), Immunofluorescence (IF), Immunocytochemistry (ICC)

Product Details

Immunogen:	Recombinant protein encompassing a sequence within the C-terminus region of human DNA ligase III. The exact sequence is proprietary.
Isotype:	IgG
Cross-Reactivity:	Hamster, Human
Characteristics:	Rabbit Polyclonal antibody to DNA ligase III (ligase III, DNA, ATP-dependent) DNA ligase III antibody [C2C3], C-term
Purification:	Purified by antigen-affinity chromatography.
Grade:	KO Validated

Target Details

Target:	LIG3
Alternative Name:	DNA ligase 3 (LIG3 Products)
Background:	<p>This gene is a member of the DNA ligase family. Each member of this family encodes a protein that catalyzes the joining of DNA ends but they each have a distinct role in DNA metabolism.</p> <p>The protein encoded by this gene is involved in excision repair and is located in both the mitochondria and nucleus, with translation initiation from the upstream start codon allowing for transport to the mitochondria and translation initiation from a downstream start codon allowing for transport to the nucleus. Additionally, alternate transcriptional splice variants, encoding different isoforms, have been characterized.</p> <p>Cellular Localization: Nucleus</p>
Molecular Weight:	113 kDa
Gene ID:	3980
UniProt:	P49916
Pathways:	DNA Damage Repair

Application Details

Application Notes:	WB: 1:500-1:3000. ICC/IF: 1:100-1:1000. Optimal dilutions/concentrations should be determined by the researcher. Not tested in other applications.
Comment:	Positive Control: 293T Validation: KO/KD, Orthogonal
Restrictions:	For Research Use only

Handling

Format:	Liquid
Concentration:	0.15 mg/mL
Buffer:	1XPBS pH 7, 1 % BSA, 20 % Glycerol, 0.025 % ProClin 300
Preservative:	ProClin
Precaution of Use:	This product contains ProClin: a POISONOUS AND HAZARDOUS SUBSTANCE which should be handled by trained staff only.

Handling

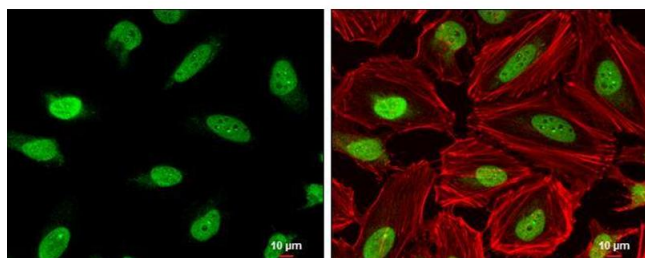
Storage: 4 °C, -20 °C

Storage Comment: Store as concentrated solution. Centrifuge briefly prior to opening vial. For short-term storage (1-2 weeks), store at 4°C. For long-term storage, aliquot and store at -20°C or below. Avoid multiple freeze-thaw cycles.

Publications

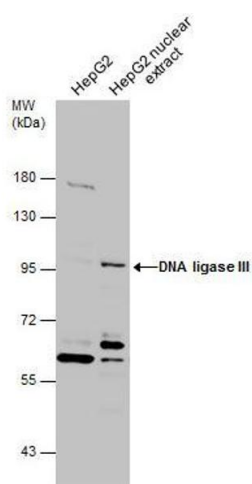
Product cited in: Shirozu, Iwano, Ogiso, Suzuki, Balboula, Bai, Kawahara, Kimura, Takahashi, Rulan, Kim, Yanagawa, Nagano, Imakawa, Takahashi: "Estrous cycle stage-dependent manner of type I interferon-stimulated genes induction in the bovine endometrium." in: **The Journal of reproduction and development**, Vol. 63, Issue 3, pp. 211-220, (2018) ([PubMed](#)).

Images



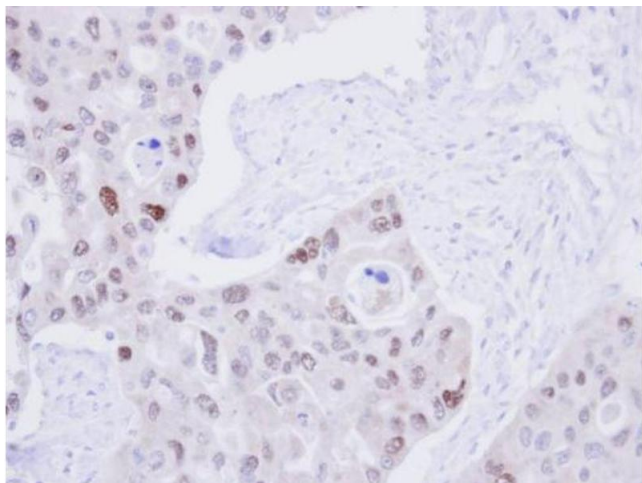
Immunofluorescence

Image 1. ICC/IF Image DNA ligase III antibody [C2C3], C-term detects DNA ligase III protein at nucleus by immunofluorescent analysis. Sample: HeLa cells were fixed in 4% paraformaldehyde at RT for 15 min. Green: DNA ligase III protein stained by DNA ligase III antibody [C2C3], C-term, diluted at 1:200. Red: phalloidin, a cytoskeleton marker, diluted at 1:200. Scale bar = 10 μm.



Western Blotting

Image 2. WB Image HepG2 whole cell and nuclear extracts (30 μg) were separated by 7.5% SDS-PAGE, and the membrane was blotted with DNA ligase III antibody [C2C3], C-term, diluted at 1:500.



Immunohistochemistry

Image 3. IHC-P Image Immunohistochemical analysis of paraffin-embedded H441 Xenograft, using DNA ligase 3, antibody at 1:100 dilution.