

Datasheet for ABIN2855576

**anti-TAB1 antibody****2** Images[Go to Product page](#)

## Overview

Quantity:	100 µL
Target:	TAB1
Reactivity:	Human
Host:	Rabbit
Clonality:	Polyclonal
Conjugate:	This TAB1 antibody is un-conjugated
Application:	Western Blotting (WB), Immunofluorescence (IF), Immunocytochemistry (ICC)

## Product Details

Immunogen:	Recombinant protein encompassing a sequence within the center region of human TAB1. The exact sequence is proprietary.
Isotype:	IgG
Cross-Reactivity:	Human
Characteristics:	Rabbit Polyclonal antibody to TAB1 (TGF-beta activated kinase 1/MAP3K7 binding protein 1) TAB1 antibody
Purification:	Purified by antigen-affinity chromatography.

## Target Details

Target:	TAB1
Alternative Name:	TGF-beta activated kinase 1 (MAP3K7) binding protein 1 ( <a href="#">TAB1 Products</a> )

## Target Details

**Background:** The protein encoded by this gene was identified as a regulator of the MAP kinase kinase kinase MAP3K7/TAK1, which is known to mediate various intracellular signaling pathways, such as those induced by TGF beta, interleukin 1, and WNT-1. This protein interacts and thus activates TAK1 kinase. It has been shown that the C-terminal portion of this protein is sufficient for binding and activation of TAK1, while a portion of the N-terminus acts as a dominant-negative inhibitor of TGF beta, suggesting that this protein may function as a mediator between TGF beta receptors and TAK1. This protein can also interact with and activate the mitogen-activated protein kinase 14 (MAPK14/p38alpha), and thus represents an alternative activation pathway, in addition to the MAPKK pathways, which contributes to the biological responses of MAPK14 to various stimuli. Alternatively spliced transcript variants encoding distinct isoforms have been reported.

**Molecular Weight:** 55 kDa

**Gene ID:** 10454

**UniProt:** [Q15750](#)

**Pathways:** [TLR Signaling](#), [Fc-epsilon Receptor Signaling Pathway](#), [Activation of Innate immune Response](#), [Toll-Like Receptors Cascades](#)

## Application Details

**Application Notes:** WB: 1:500-1:3000. ICC/IF: 1:100-1:1000. Optimal dilutions/concentrations should be determined by the researcher. Not tested in other applications.

**Comment:** Positive Control: MAP3K7IP1 transfected 293T

**Restrictions:** For Research Use only

## Handling

**Format:** Liquid

**Concentration:** 0.26 mg/mL

**Buffer:** 0.1M Tris-Glycine ( pH 7), 10 % Glycerol, 0.01 % Thimerosal

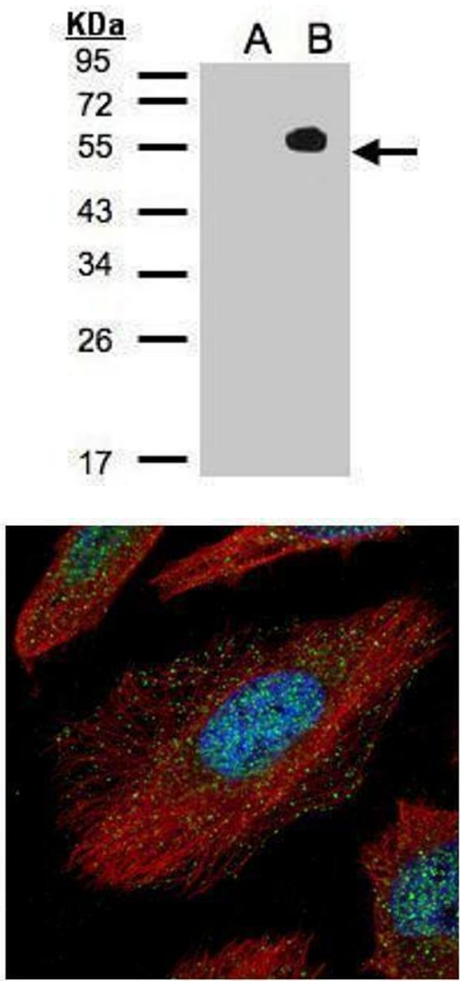
**Preservative:** Thimerosal (Merthiolate)

**Precaution of Use:** This product contains Thimerosal (Merthiolate): a POISONOUS AND HAZARDOUS SUBSTANCE which should be handled by trained staff only.

Handling

Storage:	4 °C,-20 °C
Storage Comment:	Store as concentrated solution. Centrifuge briefly prior to opening vial. For short-term storage (1-2 weeks), store at 4°C. For long-term storage, aliquot and store at -20°C or below. Avoid multiple freeze-thaw cycles.

Validation report #103867 for Immunohistochemistry (IHC)



Western Blotting

**Image 1.** WB Image Western Blot analysis of TAB1 expression in transfected 293T cell line by MAP3K7IP1 polyclonal antibody. A: Non-transfected lysate. B: TAB1 transfected lysate. 12% SDS PAGE antibody diluted at 1:500

Immunofluorescence

**Image 2.** ICC/IF Image Confocal immunofluorescence analysis (Olympus FV10i) of paraformaldehyde-fixed HeLa, using TAB1, antibody (Green) at 1:500 dilution. Alpha-tubulin filaments were labeled with (Red) at 1:2000.