

Datasheet for ABIN2855580

anti-LAMP2 antibody[Go to Product page](#)

3 Images

2 Publications

Overview

Quantity:	100 µL
Target:	LAMP2
Reactivity:	Human
Host:	Rabbit
Clonality:	Polyclonal
Conjugate:	This LAMP2 antibody is un-conjugated
Application:	Western Blotting (WB), Immunocytochemistry (ICC), Immunofluorescence (IF), Immunohistochemistry (Paraffin-embedded Sections) (IHC (p))

Product Details

Immunogen:	Recombinant protein encompassing a sequence within the center region of human LAMP2. The exact sequence is proprietary.
Isotype:	IgG
Cross-Reactivity:	Human
Characteristics:	Rabbit Polyclonal antibody to LAMP2 (lysosomal-associated membrane protein 2) LAMP2 antibody
Purification:	Purified by antigen-affinity chromatography.
Grade:	KO Validated

Target Details

Target:	LAMP2
---------	-------

Target Details

Alternative Name:	lysosomal associated membrane protein 2 (LAMP2 Products)
Background:	<p>The protein encoded by this gene is a member of a family of membrane glycoproteins. This glycoprotein provides selectins with carbohydrate ligands. It may play a role in tumor cell metastasis. It may also function in the protection, maintenance, and adhesion of the lysosome. Alternative splicing of this gene results in multiple transcript variants encoding distinct proteins.</p> <p>Cellular Localization: Cell membrane, Single-pass type I membrane protein , Endosome membrane, Single-pass type I membrane protein , Lysosome membrane, Single-pass type I membrane protein</p>
Molecular Weight:	45 kDa
Gene ID:	3920
UniProt:	P13473
Pathways:	Autophagy

Application Details

Application Notes:	WB: 1:500-1:3000. ICC/IF: 1:100-1:1000. IHC-P: 1:100-1:1000. Optimal dilutions/concentrations should be determined by the researcher. Not tested in other applications.
Comment:	Validatio: KO/KD, Orthogonal
Restrictions:	For Research Use only

Handling

Format:	Liquid
Concentration:	0.63 mg/mL
Buffer:	1XPBS (pH 7), 20 % Glycerol, 0.025 % ProClin 300
Preservative:	ProClin
Precaution of Use:	This product contains ProClin: a POISONOUS AND HAZARDOUS SUBSTANCE which should be handled by trained staff only.
Storage:	4 °C,-20 °C
Storage Comment:	Store as concentrated solution. Centrifuge briefly prior to opening vial. For short-term storage

Handling

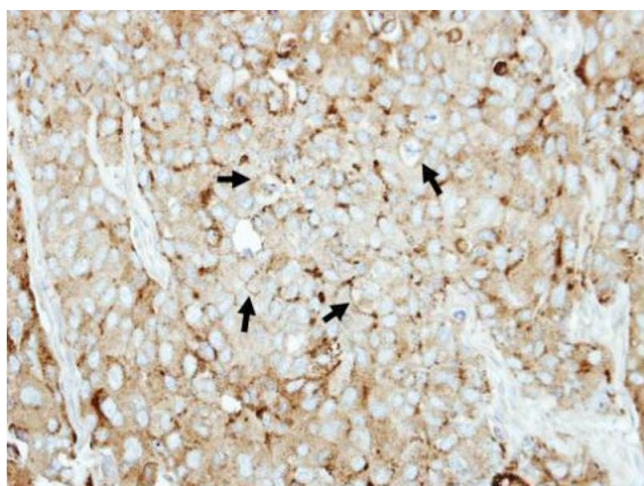
(1-2 weeks), store at 4°C. For long-term storage, aliquot and store at -20°C or below. Avoid multiple freeze-thaw cycles.

Publications

Product cited in: Glaeser, Urban, Fenech, Voloshanenko, Kranz, Lari, Christianson, Boutros: "ERAD-dependent control of the Wnt secretory factor Evi." in: **The EMBO journal**, Vol. 37, Issue 4, (2018) ([PubMed](#)).

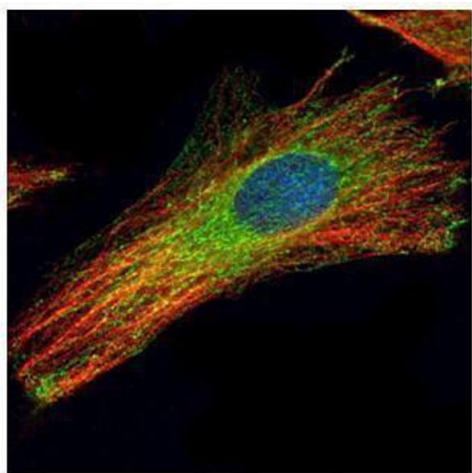
Jain, Noordam, Hoshi, Vallania, Conrad: "Validating single-cell genomics for the study of renal development." in: **Kidney international**, Vol. 86, Issue 5, pp. 1049-55, (2015) ([PubMed](#)).

Images



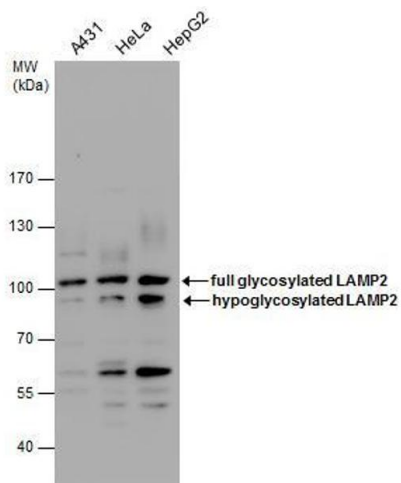
Immunohistochemistry

Image 1. IHC-P Image Immunohistochemical analysis of paraffin-embedded BT474 xenograft, using LAMP2, antibody at 1:500 dilution.



Immunofluorescence

Image 2. ICC/IF Image Confocal immunofluorescence analysis (Olympus FV10i) of methanol-fixed HeLa, using LAMP2, antibody (Green) at 1:200 dilution. Alpha-tubulin filaments were labeled with (Red) at 1:2000.



Western Blotting

Image 3. WB Image LAMP2 antibody detects LAMP2 protein by western blot analysis. Various whole cell extracts (30 µg) were separated by 7.5% SDS-PAGE, and the membrane was blotted with LAMP2 antibody, diluted by 1:500.