



Datasheet for ABIN2855581
anti-ACTN3 antibody (Center)



[Go to Product page](#)

4 Images

Overview

Quantity:	100 µL
Target:	ACTN3
Binding Specificity:	Center
Reactivity:	Human, Mouse, Rat
Host:	Rabbit
Clonality:	Polyclonal
Conjugate:	This ACTN3 antibody is un-conjugated
Application:	Western Blotting (WB), Immunoprecipitation (IP)

Product Details

Immunogen:	Recombinant protein encompassing a sequence within the center region of human alpha Actinin 3. The exact sequence is proprietary.
Isotype:	IgG
Cross-Reactivity:	Cow (Bovine)
Cross-Reactivity (Details):	Bovine (100 %)
Characteristics:	Rabbit Polyclonal antibody to alpha Actinin 3 (alpha-actinin-3) alpha Actinin 3 antibody
Purification:	Purified by antigen-affinity chromatography.

Target Details

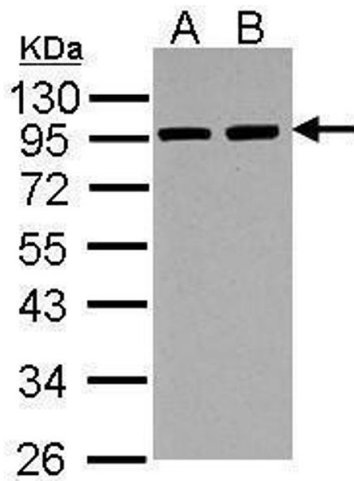
Target:	ACTN3
Alternative Name:	alpha Actinin 3 (ACTN3 Products)
Background:	Alpha-actinin is an actin-binding protein with multiple roles in different cell types. This gene expression is limited to skeletal muscle. It is localized to the Z-disc and analogous dense bodies, where it helps to anchor the myofibrillar actin filaments
Molecular Weight:	103 kDa
Gene ID:	89
Pathways:	Cell-Cell Junction Organization

Application Details

Application Notes:	Suggested dilution Reference Immunoprecipitation 1:100-1:500* Western blot 1:5000-1:20000* Not tested in other applications. *Optimal dilutions/concentrations should be determined by the researcher.Suggested dilutionReferenceImmunoprecipitation1:100-1:500* Western blot1:5000-1:20000*
Comment:	Positive Control: 293T , A431 , HeLa , HepG2 , NIH-3T3 , JC , PC-12
Restrictions:	For Research Use only

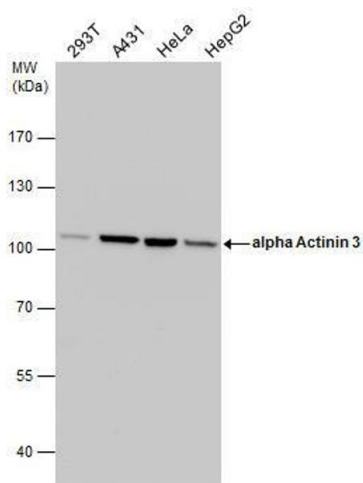
Handling

Format:	Liquid
Concentration:	1 mg/mL
Buffer:	1XPBS, 1 % BSA, 20 % Glycerol (pH 7). 0.01 % Thimerosal was added as a preservative.
Preservative:	Thimerosal (Merthiolate)
Precaution of Use:	This product contains Thimerosal (Merthiolate): a POISONOUS AND HAZARDOUS SUBSTANCE which should be handled by trained staff only.
Storage:	-20 °C
Storage Comment:	Keep as concentrated solution. Aliquot and store at -20°C or below. Avoid multiple freeze-thaw cycles.



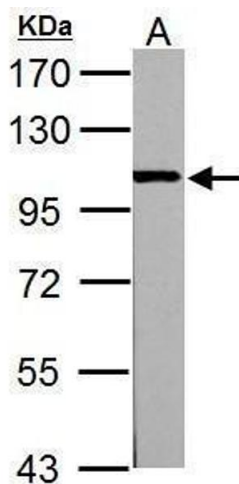
Western Blotting

Image 1. WB Image Sample (30 ug of whole cell lysate) A: NIH-3T3 B: JC 7.5% SDS PAGE antibody diluted at 1:10000



Western Blotting

Image 2. WB Image alpha Actinin 3 antibody detects alpha Actinin 3 protein by western blot analysis. Various whole cell extracts (30 µg) were separated by 7.5% SDS-PAGE, and the membrane was blotted with alpha Actinin 3 antibody , diluted by 1:10000.



Western Blotting

Image 3. WB Image Sample (30 ug of whole cell lysate) A: PC-12 7.5% SDS PAGE antibody diluted at 1:10000

Please check the [product details page](#) for more images. Overall 4 images are available for ABIN2855581.