

Datasheet for ABIN2855582
anti-ACTN2 antibody



[Go to Product page](#)

7 Images

1 Publication

Overview

Quantity:	100 µL
Target:	ACTN2
Reactivity:	Human
Host:	Rabbit
Clonality:	Polyclonal
Conjugate:	This ACTN2 antibody is un-conjugated
Application:	Western Blotting (WB), Immunohistochemistry (IHC), Immunohistochemistry (Paraffin-embedded Sections) (IHC (p)), Immunofluorescence (IF), Immunocytochemistry (ICC)

Product Details

Immunogen:	Recombinant protein encompassing a sequence within the center region of human alpha Actinin 2. The exact sequence is proprietary.
Isotype:	IgG
Specificity:	Based on sequence homology, this antibody may cross-react with other Actinin family members.
Cross-Reactivity:	Human, Mouse, Pig, Rat, Zebrafish (Danio rerio)
Characteristics:	Rabbit Polyclonal antibody to alpha Actinin 2 (actinin, alpha 2) alpha Actinin 2 antibody [N1N3]
Purification:	Purified by antigen-affinity chromatography.

Target Details

Target:	ACTN2
Alternative Name:	actinin alpha 2 (ACTN2 Products)
Background:	<p>Alpha actinins belong to the spectrin gene superfamily which represents a diverse group of cytoskeletal proteins, including the alpha and beta spectrins and dystrophins. Alpha actinin is an actin-binding protein with multiple roles in different cell types. In nonmuscle cells, the cytoskeletal isoform is found along microfilament bundles and adherens-type junctions, where it is involved in binding actin to the membrane. In contrast, skeletal, cardiac, and smooth muscle isoforms are localized to the Z-disc and analogous dense bodies, where they help anchor the myofibrillar actin filaments. This gene encodes a muscle-specific, alpha actinin isoform that is expressed in both skeletal and cardiac muscles.</p> <p>Cellular Localization: Cytoplasm , myofibril , sarcomere , Z-disk</p>
Molecular Weight:	104 kDa
Gene ID:	88
UniProt:	P35609
Pathways:	Cell-Cell Junction Organization , Skeletal Muscle Fiber Development , Negative Regulation of Transporter Activity

Application Details

Application Notes:	WB: 1:500-1:10000. ICC/IF: 1:100-1:1000. IHC-P: 1:100-1:1000. Optimal dilutions/concentrations should be determined by the researcher. Not tested in other applications.
Restrictions:	For Research Use only

Handling

Format:	Liquid
Concentration:	0.18 mg/mL
Buffer:	1XPBS pH 7, 1 % BSA, 20 % Glycerol, 0.025 % ProClin 300
Preservative:	ProClin
Precaution of Use:	This product contains ProClin: a POISONOUS AND HAZARDOUS SUBSTANCE which should be handled by trained staff only.
Storage:	4 °C,-20 °C

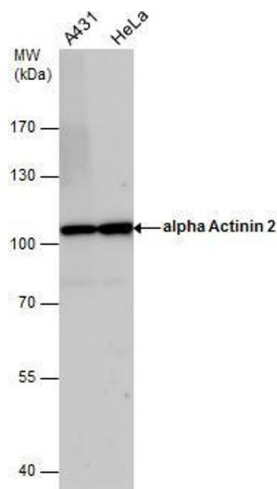
Handling

Storage Comment: Store as concentrated solution. Centrifuge briefly prior to opening vial. For short-term storage (1-2 weeks), store at 4°C. For long-term storage, aliquot and store at -20°C or below. Avoid multiple freeze-thaw cycles.

Publications

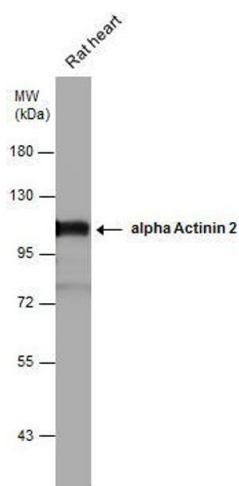
Product cited in: Shirozu, Iwano, Ogiso, Suzuki, Balboula, Bai, Kawahara, Kimura, Takahashi, Rulan, Kim, Yanagawa, Nagano, Imakawa, Takahashi: "Estrous cycle stage-dependent manner of type I interferon-stimulated genes induction in the bovine endometrium." in: **The Journal of reproduction and development**, Vol. 63, Issue 3, pp. 211-220, (2018) ([PubMed](#)).

Images



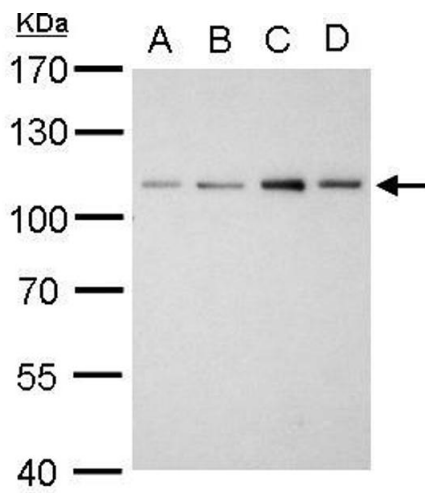
Western Blotting

Image 1. WB Image alpha Actinin 2 antibody detects alpha Actinin 2 protein by western blot analysis. Various whole cell extracts (30 µg) were separated by 7.5% SDS-PAGE, and the membrane was blotted with alpha Actinin 2 antibody, diluted by 1:1000.



Western Blotting

Image 2. WB Image alpha Actinin 2 antibody detects alpha Actinin 2 protein by western blot analysis. Rat tissue extracts (50 µg) was separated by 7.5% SDS-PAGE, and the membrane was blotted with alpha Actinin 2 antibody, diluted at 1:5000.



Western Blotting

Image 3. WB Image Alpha Actinin 2 antibody [N1N3] detects ACTN2 protein by western blot analysis. A. 30 μ g Neuro2A whole cell lysate/extract B. 30 μ g GL261 whole cell lysate/extract C. 30 μ g C8D30 whole cell lysate/extract D. 30 μ g NIH-3T3 whole cell lysate/extract 7.5 % SDS-PAGE alpha Actinin 2 antibody [N1N3] , dilution: 1:1000

Please check the [product details page](#) for more images. Overall 7 images are available for ABIN2855582.