

Datasheet for ABIN2855585

anti-TFAM antibody

5 Images

[Go to Product page](#)

Overview

Quantity:	100 µL
Target:	TFAM
Reactivity:	Human
Host:	Rabbit
Clonality:	Polyclonal
Conjugate:	This TFAM antibody is un-conjugated
Application:	Western Blotting (WB), Immunofluorescence (IF), Immunoprecipitation (IP), Immunocytochemistry (ICC), Immunohistochemistry (Paraffin-embedded Sections) (IHC (p))

Product Details

Immunogen:	Recombinant protein encompassing a sequence within the center region of human mtTFA. The exact sequence is proprietary.
Isotype:	IgG
Cross-Reactivity:	Human, Mouse
Characteristics:	Rabbit Polyclonal antibody to mtTFA (transcription factor A, mitochondrial) mtTFA antibody
Purification:	Purified by antigen-affinity chromatography.
Grade:	KO Validated

Target Details

Target:	TFAM
---------	------

Target Details

Alternative Name:	transcription factor A, mitochondrial (TFAM Products)
Background:	<p>This gene encodes a mitochondrial transcription factor that is a key activator of mitochondrial transcription as well as a participant in mitochondrial genome replication. Studies in mice have demonstrated that this gene product is required to regulate the mitochondrial genome copy number and is essential for embryonic development. A mouse model for Kearns-Sayre syndrome was produced when expression of this gene was eliminated by targeted disruption in heart and muscle cells.</p> <p>Cellular Localization: Mitochondrion</p>
Molecular Weight:	29 kDa
Gene ID:	7019
UniProt:	Q00059
Pathways:	Chromatin Binding

Application Details

Application Notes:	WB: 1:500-1:3000. ICC/IF: 1:100-1:1000. IHC-P: 1:100-1:1000. IP: 1:100-1:500. Optimal dilutions/concentrations should be determined by the researcher. Not tested in other applications.
Comment:	<p>Positive Control: 293T , A431 , HeLa , HepG2</p> <p>Validation: KO/KD, Orthogonal</p>
Restrictions:	For Research Use only

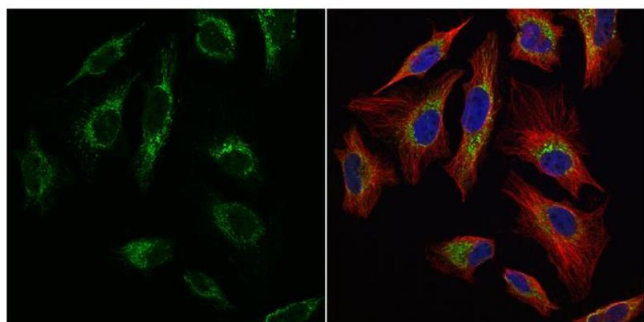
Handling

Format:	Liquid
Concentration:	1.23 mg/mL
Buffer:	1XPBS pH 7, 20 % Glycerol, 0.025 % ProClin 300
Preservative:	ProClin
Precaution of Use:	This product contains ProClin: a POISONOUS AND HAZARDOUS SUBSTANCE which should be handled by trained staff only.
Storage:	4 °C, -20 °C

Handling

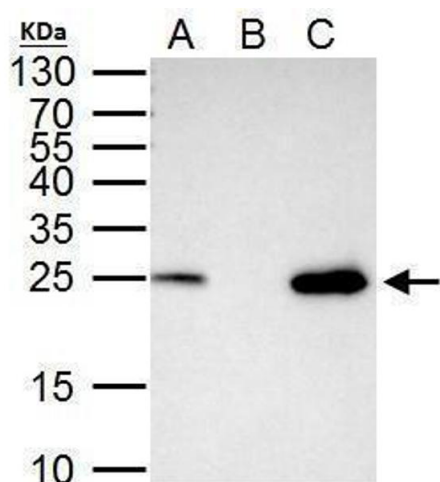
Storage Comment: Store as concentrated solution. Centrifuge briefly prior to opening vial. For short-term storage (1-2 weeks), store at 4°C. For long-term storage, aliquot and store at -20°C or below. Avoid multiple freeze-thaw cycles.

Images



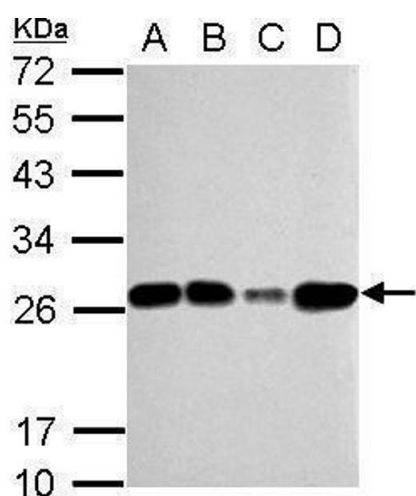
Immunofluorescence

Image 1. ICC/IF Image mtTFA antibody detects mtTFA protein at mitochondria by immunofluorescent analysis. Sample: HeLa cells were fixed in 4% paraformaldehyde at RT for 15 min. Green: mtTFA protein stained by mtTFA antibody, diluted at 1:1000. Red: alpha Tubulin, a cytoskeleton marker, stained by alpha Tubulin antibody [B-5-1-2], diluted at 1:10000. Blue: Hoechst 33342 staining.



Immunoprecipitation

Image 2. IP Image mtTFA antibody immunoprecipitates mtTFA protein in IP experiments. IP Sample: 293T whole cell lysate/extract A. 40 µg 293T whole cell lysate/extract B. Control with 2 µg of preimmune rabbit IgG C. Immunoprecipitation of mtTFA protein by 2 µg of mtTFA antibody, 15% SDS-PAGE The immunoprecipitated mtTFA protein was detected by mtTFA antibody, diluted at 1:1000. EasyBlot anti-rabbit IgG was used as a secondary reagent.



Western Blotting

Image 3. WB Image Sample (30 ug of whole cell lysate) A: 293T B: A431 C: HeLa D: HepG2 12% SDS PAGE antibody diluted at 1:5000

Please check the [product details page](#) for more images. Overall 5 images are available for ABIN2855585.