



[Go to Product page](#)

Datasheet for ABIN2855600  
**anti-HOMER1 antibody (Center)**

7 Images

Overview

Quantity:	100 µL
Target:	HOMER1
Binding Specificity:	Center
Reactivity:	Human, Mouse, Rat
Host:	Rabbit
Clonality:	Polyclonal
Conjugate:	This HOMER1 antibody is un-conjugated
Application:	Western Blotting (WB), Immunofluorescence (IF), Immunohistochemistry (Paraffin-embedded Sections) (IHC (p)), Immunocytochemistry (ICC), Immunoprecipitation (IP)

Product Details

Immunogen:	Recombinant protein encompassing a sequence within the center region of human Homer. The exact sequence is proprietary.
Isotype:	IgG
Characteristics:	Rabbit Polyclonal antibody to Homer (homer homolog 1 (Drosophila)) Homer antibody
Purification:	Purified by antigen-affinity chromatography.

Target Details

Target:	HOMER1
Alternative Name:	Homer ( <a href="#">HOMER1 Products</a> )

## Target Details

---

Background:	<p>This gene encodes a member of the homer family of dendritic proteins. Members of this family regulate group 1 metabotropic glutamate receptor function.</p> <p>Cellular Localization: Cytoplasm (By similarity) , Cell junction , synapse , postsynaptic cell membrane , postsynaptic density (By similarity) , synapse (By similarity)</p>
Molecular Weight:	40 kDa
Gene ID:	9456
Pathways:	<a href="#">Skeletal Muscle Fiber Development</a>

## Application Details

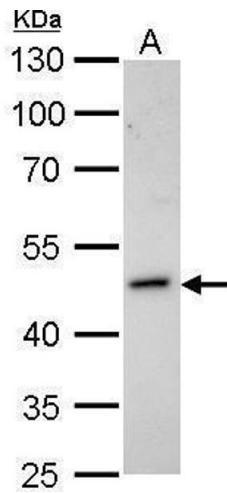
---

Application Notes:	<p>Suggested dilution Reference ICC/IF 1:100-1:1000* IHC (Formalin-fixed paraffin-embedded sections) 1:100-1:1000* Immunoprecipitation 1:100-1:500* Western blot 1:500-1:3000* Immunoblotting Assay-dependent dilution Not tested in other applications. *Optimal dilutions/concentrations should be determined by the researcher.Suggested dilutionReferenceICC/IF1:100-1:1000* IHC (Formalin-fixed paraffin-embedded sections)1:100-1:1000* Immunoprecipitation1:100-1:500* Western blot1:500-1:3000* ImmunoblottingAssay-dependent dilution</p>
Comment:	Positive Control: U87-MG , SK-N-SH , IMR32 , SK-N-AS , mouse brain , rat brain
Restrictions:	For Research Use only

## Handling

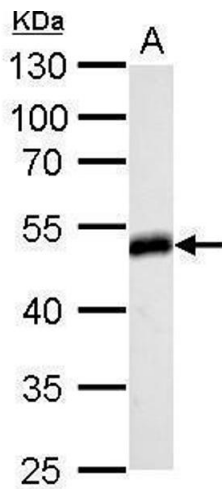
---

Format:	Liquid
Concentration:	1 mg/mL
Buffer:	0.1M Tris, 0.1M Glycine, 10 % Glycerol ( pH 7). 0.01 % Thimerosal was added as a preservative.
Preservative:	Thimerosal (Merthiolate)
Precaution of Use:	This product contains Thimerosal (Merthiolate): a POISONOUS AND HAZARDOUS SUBSTANCE which should be handled by trained staff only.
Storage:	-20 °C
Storage Comment:	Keep as concentrated solution. Aliquot and store at -20°C or below. Avoid multiple freeze-thaw cycles.



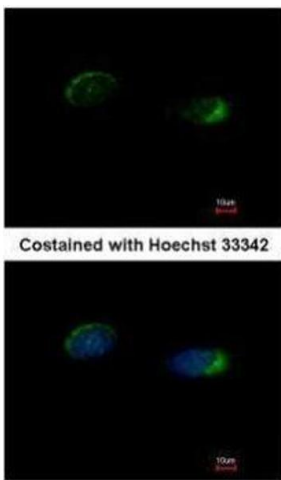
#### Western Blotting

**Image 1.** WB Image Homer antibody detects HOMER1 protein by Western blot analysis. A. 30 µg IMR32 whole cell lysate/extract 10 % SDS-PAGE Homer antibody , dilution: 1:1000



#### Western Blotting

**Image 2.** WB Image Homer antibody detects HOMER1 protein by Western blot analysis. A. 50 µg rat brain lysate/extract 10 % SDS-PAGE Homer antibody , dilution: 1:500



#### Immunofluorescence

**Image 3.** ICC/IF Image Immunofluorescence analysis of methanol-fixed HeLa, using Homer, antibody at 1:500 dilution.

Please check the [product details page](#) for more images. Overall 7 images are available for ABIN2855600.