

Datasheet for ABIN2855607

**anti-Lamin B1 antibody****3** Images**4** Publications[Go to Product page](#)

## Overview

Quantity:	100 µL
Target:	Lamin B1 (LMNB1)
Reactivity:	Human
Host:	Rabbit
Clonality:	Polyclonal
Conjugate:	This Lamin B1 antibody is un-conjugated
Application:	Western Blotting (WB), Immunoprecipitation (IP), Immunohistochemistry (Paraffin-embedded Sections) (IHC (p))

## Product Details

Immunogen:	Recombinant protein encompassing a sequence within the center region of human Lamin B1. The exact sequence is proprietary.
Isotype:	IgG
Cross-Reactivity:	Hamster, Human, Mouse
Characteristics:	Rabbit Polyclonal antibody to Lamin B1 (lamin B1) Lamin B1 antibody
Purification:	Purified by antigen-affinity chromatography.
Grade:	KO Validated

## Target Details

Target:	Lamin B1 (LMNB1)
---------	------------------

## Target Details

Alternative Name:	lamin B1 ( <a href="#">LMNB1 Products</a> )
Background:	<p>The nuclear lamina consists of a two-dimensional matrix of proteins located next to the inner nuclear membrane. The lamin family of proteins make up the matrix and are highly conserved in evolution. During mitosis, the lamina matrix is reversibly disassembled as the lamin proteins are phosphorylated. Lamin proteins are thought to be involved in nuclear stability, chromatin structure and gene expression. Vertebrate lamins consist of two types, A and B. This gene encodes one of the two B type proteins, B1.</p> <p>Cellular Localization: Nucleus inner membrane, Lipid-anchor, Nucleoplasmic side</p>
Molecular Weight:	66 kDa
Gene ID:	4001
UniProt:	<a href="#">P20700</a>
Pathways:	<a href="#">Apoptosis, Caspase Cascade in Apoptosis</a>

## Application Details

Application Notes:	WB: 1:500-1:20000. IHC-P: 1:100-1:1000. IP: 1:100-1:500. Optimal dilutions/concentrations should be determined by the researcher. Not tested in other applications.
Comment:	Validatio: KO/KD, Orthogonal
Restrictions:	For Research Use only

## Handling

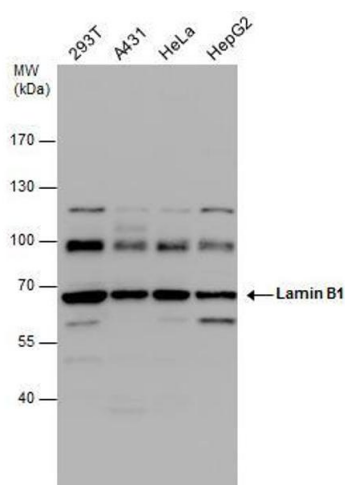
Format:	Liquid
Concentration:	1 mg/mL
Buffer:	1XPBS ( pH 7), 20 % Glycerol, 0.025 % ProClin 300
Preservative:	ProClin
Precaution of Use:	This product contains ProClin: a POISONOUS AND HAZARDOUS SUBSTANCE which should be handled by trained staff only.
Storage:	4 °C,-20 °C
Storage Comment:	Store as concentrated solution. Centrifuge briefly prior to opening vial. For short-term storage (1-2 weeks), store at 4°C. For long-term storage, aliquot and store at -20°C or below. Avoid

multiple freeze-thaw cycles.

## Publications

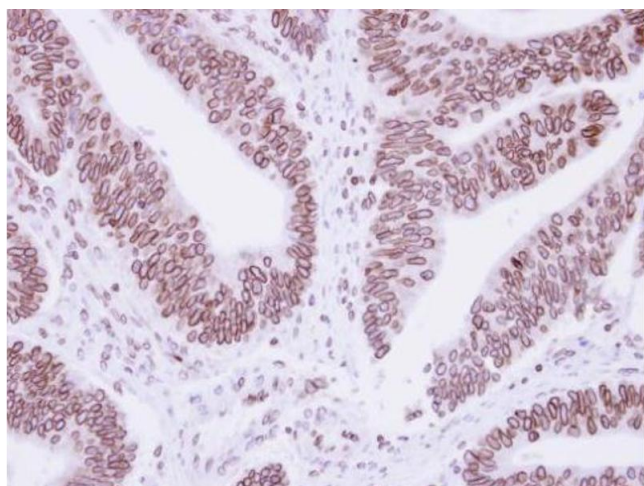
Product cited in: Piquet, Le Parc, Bai, Chevallier, Adam, Polo: "The Histone Chaperone FACT Coordinates H2A.X-Dependent Signaling and Repair of DNA Damage." in: **Molecular cell**, Vol. 72, Issue 5, pp. 888-901.e7, (2018) ([PubMed](#)).

## Validation report #104383 for Cleavage Under Targets and Release Using Nuclease (CUT&RUN)



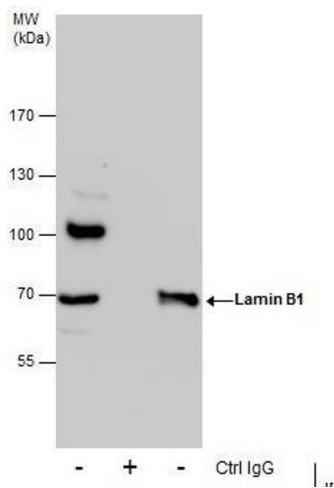
### Western Blotting

**Image 1.** WB Image Lamin B1 antibody detects Lamin B1 protein by western blot analysis. Various whole cell extracts (30 µg) were separated by 7.5% SDS-PAGE, and the membrane was blotted with Lamin B1 antibody, diluted by 1:1000.



### Immunohistochemistry

**Image 2.** IHC-P Image Immunohistochemical analysis of paraffin-embedded human colon carcinoma, using Lamin B1 antibody, antibody at 1:250 dilution.



Immunoprecipitation

**Image 3.** IP Image Immunoprecipitation of Lamin B1 protein from 293T whole cell extracts using 5 µg of Lamin B1 antibody, Western blot analysis was performed using Lamin B1 antibody, EasyBlot anti-Rabbit IgG was used as a secondary reagent.