

Datasheet for ABIN2855609

anti-IL22RA2 antibody**2** Images[Go to Product page](#)

Overview

Quantity:	100 µL
Target:	IL22RA2
Reactivity:	Human
Host:	Rabbit
Clonality:	Polyclonal
Conjugate:	This IL22RA2 antibody is un-conjugated
Application:	Western Blotting (WB), Immunohistochemistry (Paraffin-embedded Sections) (IHC (p))

Product Details

Immunogen:	Recombinant protein encompassing a sequence within the center region of human IL22 Receptor alpha 2. The exact sequence is proprietary.
Isotype:	IgG
Cross-Reactivity:	Human
Characteristics:	Rabbit Polyclonal antibody to IL22 Receptor alpha 2 (interleukin 22 receptor, alpha 2) IL22 Receptor alpha 2 antibody
Purification:	Purified by antigen-affinity chromatography.

Target Details

Target:	IL22RA2
Alternative Name:	interleukin 22 receptor subunit alpha 2 (IL22RA2 Products)

Target Details

Background: The protein encoded by this gene is a soluble class II cytokine receptor. This protein has been shown to specifically bind to interleukin 22 (IL22), block the interaction of IL22 with its cell surface receptor, and thus inhibit IL22 activity. This protein functions as an IL22 antagonist, and may be important in the regulation of inflammatory response. Three alternatively spliced transcript variants encoding distinct isoforms have been described.

Cellular Localization: Secreted

Molecular Weight: 31 kDa

Gene ID: 116379

UniProt: [Q969J5](#)

Application Details

Application Notes: WB: 1:100-1:1000. IHC-P: 1:100-1:1000. Optimal dilutions/concentrations should be determined by the researcher. Not tested in other applications.

Comment: Positive Control: HeLaS3

Restrictions: For Research Use only

Handling

Format: Liquid

Concentration: 0.66 mg/mL

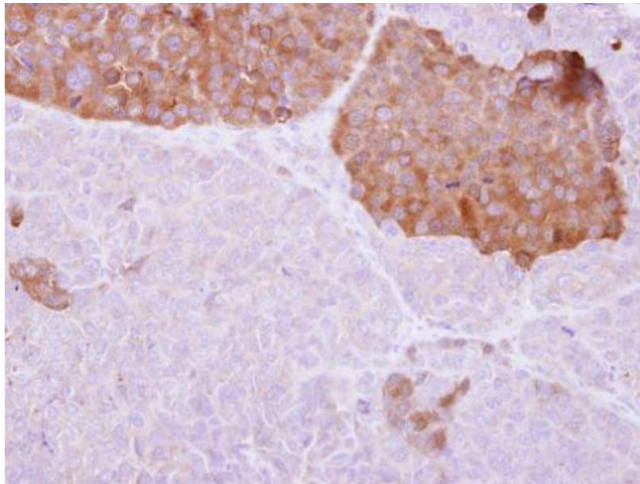
Buffer: 0.1M Tris-Glycine (pH 7), 10 % Glycerol, 0.01 % Thimerosal

Preservative: Thimerosal (Merthiolate)

Precaution of Use: This product contains Thimerosal (Merthiolate): a POISONOUS AND HAZARDOUS SUBSTANCE which should be handled by trained staff only.

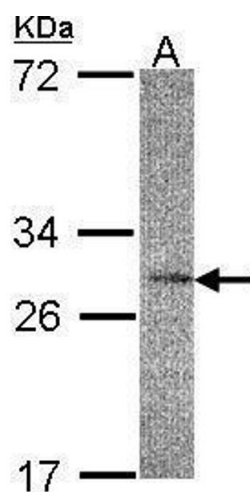
Storage: 4 °C, -20 °C

Storage Comment: Store as concentrated solution. Centrifuge briefly prior to opening vial. For short-term storage (1-2 weeks), store at 4°C. For long-term storage, aliquot and store at -20°C or below. Avoid multiple freeze-thaw cycles.



Immunohistochemistry

Image 1. IHC-P Image IL22 Receptor alpha 2 antibody detects IL22RA2 protein at cytosol on PC14 xenograft by immunohistochemical analysis. Sample: Paraffin-embedded PC14 xenograft. IL22 Receptor alpha 2 antibody , dilution: 1:250.



Western Blotting

Image 2. WB Image Sample(30 µg of whole cell lysate) A:HeLa S3, 12% SDS PAGE antibody diluted at 1:200