



[Go to Product page](#)

Datasheet for ABIN2855610

anti-ACTR2 antibody

5 Images

1 Publication

Overview

Quantity:	100 µL
Target:	ACTR2
Reactivity:	Human
Host:	Rabbit
Clonality:	Polyclonal
Conjugate:	This ACTR2 antibody is un-conjugated
Application:	Western Blotting (WB), Immunofluorescence (IF), Immunohistochemistry (Paraffin-embedded Sections) (IHC (p)), Immunocytochemistry (ICC)

Product Details

Immunogen:	Recombinant protein encompassing a sequence within the center region of human Arp2. The exact sequence is proprietary.
Isotype:	IgG
Cross-Reactivity:	Drosophila melanogaster, Human, Mouse, Rat
Characteristics:	Rabbit Polyclonal antibody to Arp2 (ARP2 actin-related protein 2 homolog (yeast)) Arp2 antibody [N1C3]
Purification:	Purified by antigen-affinity chromatography.

Target Details

Target:	ACTR2
Alternative Name:	actin related protein 2 (ACTR2 Products)

Target Details

Background: The specific function of this gene has not yet been determined, however, the protein it encodes is known to be a major constituent of the ARP2/3 complex. This complex is located at the cell surface and is essential to cell shape and motility through lamellipodial actin assembly and protrusion. Two transcript variants encoding different isoforms have been found for this gene.

Cellular Localization: Cytoplasm , cytoskeleton , Cell projection

Molecular Weight: 45 kDa

Gene ID: 10097

UniProt: [P61160](#)

Pathways: [RTK Signaling, Regulation of Actin Filament Polymerization](#)

Application Details

Application Notes: WB: 1:500-1:3000. ICC/IF: 1:100-1:1000. IHC-P: 1:100-1:1000. Optimal dilutions/concentrations should be determined by the researcher. Not tested in other applications.

Comment: Positive Control: H1299

Restrictions: For Research Use only

Handling

Format: Liquid

Concentration: 0.41 mg/mL

Buffer: 1XPBS (pH 7), 1 % BSA, 20 % Glycerol, 0.01 % Thimerosal

Preservative: Thimerosal (Merthiolate)

Precaution of Use: This product contains Thimerosal (Merthiolate): a POISONOUS AND HAZARDOUS SUBSTANCE which should be handled by trained staff only.

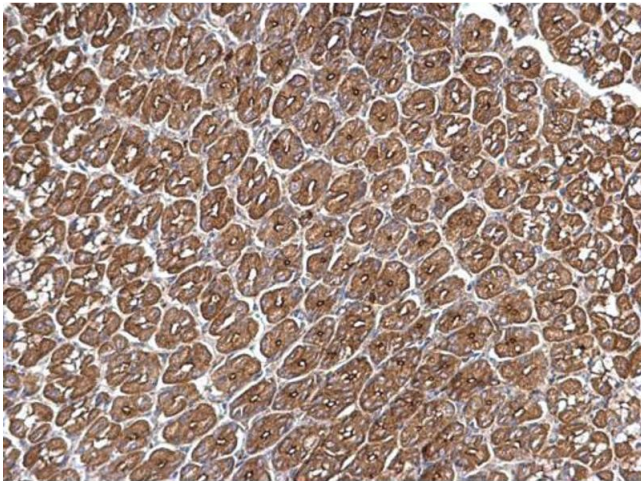
Storage: 4 °C, -20 °C

Storage Comment: Store as concentrated solution. Centrifuge briefly prior to opening vial. For short-term storage (1-2 weeks), store at 4°C. For long-term storage, aliquot and store at -20°C or below. Avoid multiple freeze-thaw cycles.

Product cited in:

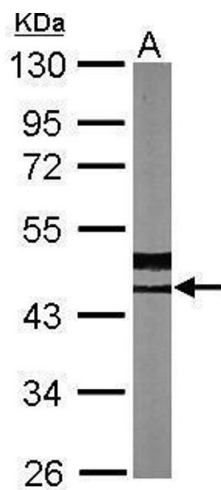
Graziano, Town, Sitarska, Nagy, Fošnarič, Penič, Iglič, Kralj-Iglič, Gov, Diz-Muñoz, Weiner: "Cell confinement reveals a branched-actin independent circuit for neutrophil polarity." in: **PLoS biology**, Vol. 17, Issue 10, pp. e3000457, (2020) ([PubMed](#)).

Images



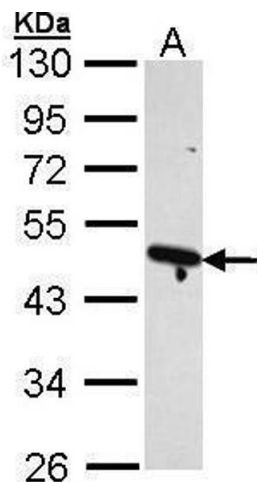
Immunohistochemistry

Image 1. IHC-P Image Arp2 antibody [N1C3] detects Arp2 protein at cytosol on mouse stomach by immunohistochemical analysis. Sample: Paraffin-embedded mouse stomach. Arp2 antibody [N1C3], dilution: 1:500.



Western Blotting

Image 2. WB Image Sample (30 ug of whole cell lysate) A: NIH-3T3 10% SDS PAGE antibody diluted at 1:1000



Western Blotting

Image 3. WB Image Sample (30 ug of whole cell lysate) A: H1299 10% SDS PAGE antibody diluted at 1:1000

Images

Please check the [product details page](#) for more images. Overall 5 images are available for ABIN2855610.