



[Go to Product page](#)

Datasheet for ABIN2855612

anti-NRF2 antibody (Internal Region)

8 Images

9 Publications

Overview

Quantity:	100 µL
Target:	NRF2 (NFE2L2)
Binding Specificity:	Internal Region
Reactivity:	Human, Rat
Host:	Rabbit
Clonality:	Polyclonal
Conjugate:	This NRF2 antibody is un-conjugated
Application:	Western Blotting (WB), Immunofluorescence (IF), Immunoprecipitation (IP), Immunocytochemistry (ICC), Immunohistochemistry (Paraffin-embedded Sections) (IHC (p)), Chromatin Immunoprecipitation (ChIP)

Product Details

Immunogen:	Recombinant protein encompassing a sequence within the center region of human NRF2. The exact sequence is proprietary.
Isotype:	IgG
Characteristics:	Rabbit Polyclonal antibody to NRF2 (nuclear factor (erythroid-derived 2)-like 2) NRF2 antibody [N2C2], Internal
Purification:	Purified by antigen-affinity chromatography.

Target Details

Target:	NRF2 (NFE2L2)
---------	---------------

Target Details

Alternative Name:	NRF2 (NFE2L2 Products)
Background:	NFE2 (MIM 601490), NFE2L1 (MIM 163260), and NFE2L2 comprise a family of human genes encoding basic leucine zipper (bZIP) transcription factors. They share highly conserved regions that are distinct from other bZIP families, such as JUN (MIM 165160) and FOS (MIM 164810), although remaining regions have diverged considerably from each other (Chan et al., 1995 [PubMed 7868116]).[supplied by OMIM] Cellular Localization: Cytoplasm , cytosol , Nucleus
Molecular Weight:	68 kDa110
Gene ID:	4780
Pathways:	ER-Nucleus Signaling , Negative Regulation of intrinsic apoptotic Signaling

Application Details

Application Notes:	Suggested dilution Reference ChIP assay Assay-dependent dilution ICC/IF 1:100-1:1000* IHC (Formalin-fixed paraffin-embedded sections) 1:100-1:1000* Immunoprecipitation 1:100-1:500* Western blot 1:500-1:3000* Not tested in other applications. *Optimal dilutions/concentrations should be determined by the researcher.Suggested dilutionReferenceChIP assayAssay-dependent dilution ICC/IF1:100-1:1000* IHC (Formalin-fixed paraffin-embedded sections)1:100-1:1000* Immunoprecipitation1:100-1:500* Western blot1:500-1:3000*
Comment:	Positive Control: MDA-MB-231 NE , MDA-MB-231 NE treated tBHQ , 3xFlag-human NFE2L2-transfected 293T
Restrictions:	For Research Use only

Handling

Format:	Liquid
Concentration:	0.51 mg/mL
Buffer:	1XPBS, 20 % Glycerol (pH 7). 0.025 % ProClin 300 was added as a preservative.
Preservative:	ProClin
Precaution of Use:	This product contains ProClin: a POISONOUS AND HAZARDOUS SUBSTANCE which should be handled by trained staff only.
Storage:	-20 °C

Handling

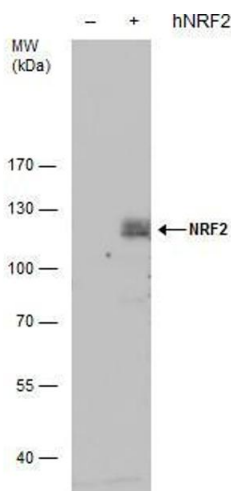
Storage Comment: Keep as concentrated solution. Aliquot and store at -20°C or below. Avoid multiple freeze-thaw cycles.

Publications

Product cited in: Kitano, Kino, Yamamoto, Takitani, Miyoshi, Ishida, Saito, Arima, Satoh: "Bioinformatics Data Mining Approach Suggests Coexpression of AGTPBP1 with an ALS-linked Gene C9orf72." in: **Journal of central nervous system disease**, Vol. 7, pp. 15-26, (2015) ([PubMed](#)).

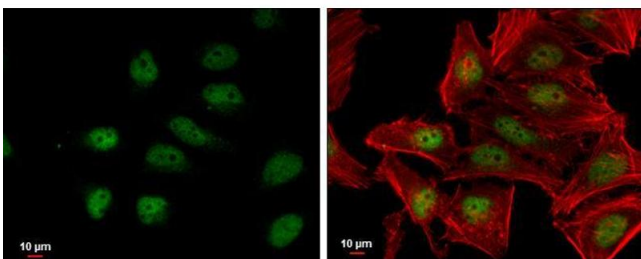
There are more publications referencing this product on: [Product page](#)

Images



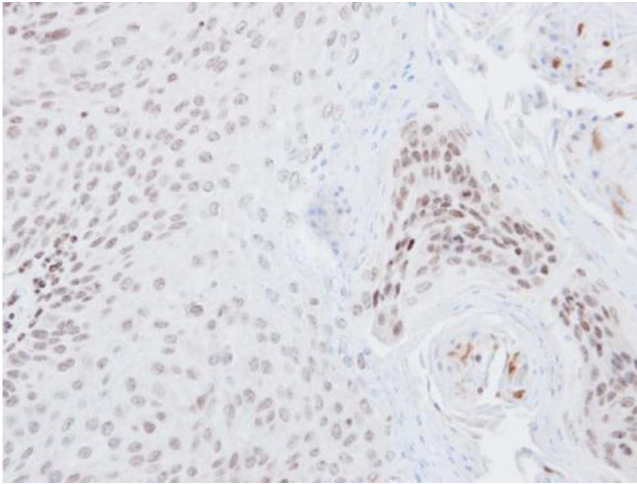
Western Blotting

Image 1. WB Image NRF2 antibody detects NRF2 protein by western blot analysis. Non-transfected (-) and NRF2-transfected (+, including 3xFlag-tag) 293T whole cell extracts (30 µg) were separated by 5% SDS-PAGE, and the membrane was blotted with NRF2 antibody, diluted by 1:1000.



Immunofluorescence

Image 2. ICC/IF Image NRF2 antibody [N2C2], Internal detects NRF2 protein at nucleus by immunofluorescent analysis. Sample: HeLa cells were fixed in 4% paraformaldehyde at RT for 15 min. Green: NRF2 protein stained by NRF2 antibody [N2C2], Internal, diluted at 1:500. Red: Phalloidin, a cytoskeleton marker, diluted at 1:200. Scale bar = 10 µm.



Immunohistochemistry

Image 3. IHC-P Image Immunohistochemical analysis of paraffin-embedded Cal27 xenograft, using NRF2, antibody at 1:500 dilution.

Please check the [product details page](#) for more images. Overall 8 images are available for ABIN2855612.