



[Go to Product page](#)

Datasheet for ABIN2855613
anti-Plastin 3 antibody

4 Images

Overview

Quantity:	100 µL
Target:	Plastin 3 (PLS3)
Reactivity:	Human
Host:	Rabbit
Clonality:	Polyclonal
Conjugate:	This Plastin 3 antibody is un-conjugated
Application:	Western Blotting (WB), Immunocytochemistry (ICC), Immunofluorescence (IF), Immunohistochemistry (Paraffin-embedded Sections) (IHC (p))

Product Details

Immunogen:	Recombinant protein encompassing a sequence within the center region of human T-Plastin. The exact sequence is proprietary.
Isotype:	IgG
Cross-Reactivity:	Human, Mouse
Characteristics:	Rabbit Polyclonal antibody to T-Plastin (plastin-3) T-Plastin antibody
Purification:	Purified by antigen-affinity chromatography.
Grade:	KO Validated

Target Details

Target:	Plastin 3 (PLS3)
---------	------------------

Target Details

Alternative Name: [plastin 3 \(PLS3 Products\)](#)

Background: Plastins are a family of actin-binding proteins that are conserved throughout eukaryote evolution and expressed in most tissues of higher eukaryotes. In humans, two ubiquitous plastin isoforms (L and T) have been identified. Plastin 1 (otherwise known as Fimbrin) is a third distinct plastin isoform which is specifically expressed at high levels in the small intestine. The L isoform is expressed only in hemopoietic cell lineages, while the T isoform has been found in all other normal cells of solid tissues that have replicative potential (fibroblasts, endothelial cells, epithelial cells, melanocytes, etc.). The C-terminal 570 amino acids of the T-plastin and L-plastin proteins are 83 % identical. It contains a potential calcium-binding site near the N terminus. Two transcript variants encoding the same protein have been found for this gene.

Cellular Localization: Cytoplasm

Molecular Weight: 71 kDa

Gene ID: 5358

UniProt: [P13797](#)

Application Details

Application Notes: WB: 1:500-1:10000. ICC/IF: 1:100-1:1000. IHC-P: 1:100-1:1000. Optimal dilutions/concentrations should be determined by the researcher. Not tested in other applications.

Comment: Positive Control: NIH-3T3 , JC , BCL-1 , 293T , A431 , Jurkat , Raji
Validation: KO/KD, Orthogonal

Restrictions: For Research Use only

Handling

Format: Liquid

Concentration: 0.23 mg/mL

Buffer: 1XPBS (pH 7), 1 % BSA, 20 % Glycerol, 0.025 % ProClin 300

Preservative: ProClin

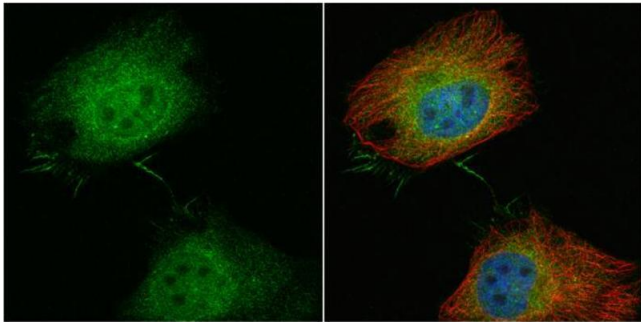
Precaution of Use: This product contains ProClin: a POISONOUS AND HAZARDOUS SUBSTANCE which should be handled by trained staff only.

Storage: 4 °C, -20 °C

Handling

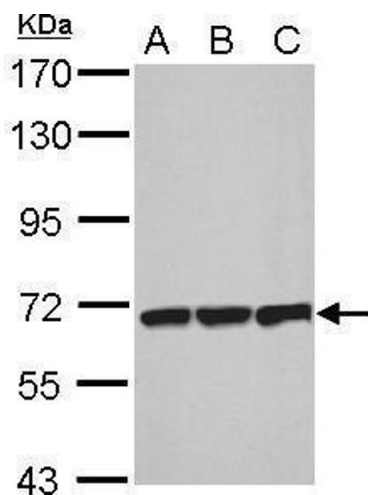
Storage Comment: Store as concentrated solution. Centrifuge briefly prior to opening vial. For short-term storage (1-2 weeks), store at 4°C. For long-term storage, aliquot and store at -20°C or below. Avoid multiple freeze-thaw cycles.

Images



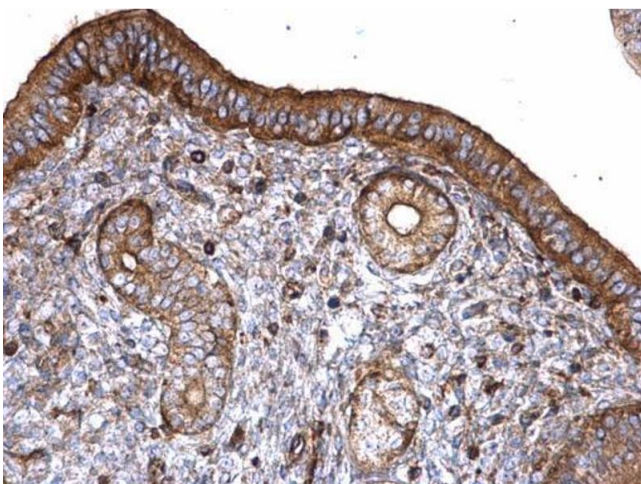
Immunofluorescence

Image 1. ICC/IF Image T-Plastin antibody detects T-Plastin protein at cytoplasm and nucleus by immunofluorescent analysis. Sample: HeLa cells were fixed in 4% paraformaldehyde at RT for 15 min. Green: T-Plastin protein stained by T-Plastin antibody, diluted at 1:100. Red: alpha Tubulin, a cytoskeleton marker, stained by alpha Tubulin antibody [GT114], diluted at 1:500. Blue: Hoechst 33342 staining.



Western Blotting

Image 2. WB Image Sample (30 ug of whole cell lysate) A: NIH-3T3 B: JC C: BCL-1 7.5% SDS PAGE antibody diluted at 1:1000



Immunohistochemistry

Image 3. IHC-P Image T-Plastin antibody detects T-Plastin protein at cytoplasm on mouse cervix by immunohistochemical analysis. Sample: Paraffin-embedded mouse cervix. T-Plastin antibody, diluted at 1:500.

Please check the [product details page](#) for more images. Overall 4 images are available for ABIN2855613.