

Datasheet for ABIN2855618  
**anti-NOV antibody (Center)**

## 5 Images

[Go to Product page](#)

## Overview

Quantity:	100 µL
Target:	NOV
Binding Specificity:	Center
Reactivity:	Human, Mouse
Host:	Rabbit
Clonality:	Polyclonal
Conjugate:	This NOV antibody is un-conjugated
Application:	Western Blotting (WB), Immunohistochemistry (Paraffin-embedded Sections) (IHC (p)), Immunocytochemistry (ICC), Immunofluorescence (IF)

## Product Details

Immunogen:	Recombinant protein encompassing a sequence within the center region of human CCN3. The exact sequence is proprietary.
Isotype:	IgG
Cross-Reactivity:	Rhesus Monkey
Cross-Reactivity (Details):	Rhesus Monkey (100 %)
Characteristics:	Rabbit Polyclonal antibody to CCN3 (nephroblastoma overexpressed gene) CCN3 antibody
Purification:	Purified by antigen-affinity chromatography.

## Target Details

Target:	NOV
Alternative Name:	CCN3 ( <a href="#">NOV Products</a> )
Background:	<p>The protein encoded by this gene is a small secreted cysteine-rich protein and a member of the CCN family of regulatory proteins. CNN family proteins associate with the extracellular matrix and play an important role in cardiovascular and skeletal development, fibrosis and cancer development.</p> <p>Cellular Localization: Secreted</p>
Molecular Weight:	39 kDa
Gene ID:	4856
Pathways:	<a href="#">Smooth Muscle Cell Migration</a> , <a href="#">Growth Factor Binding</a>

## Application Details

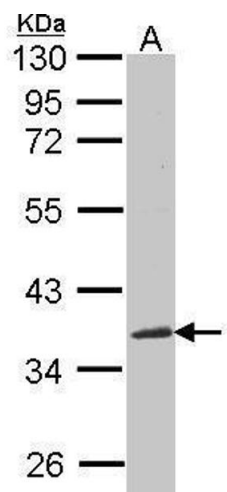
Application Notes:	<p>Suggested dilution Reference ICC/IF 1:100-1:1000* IHC (Formalin-fixed paraffin-embedded sections) 1:100-1:1000* Western blot 1:500-1:10000* Not tested in other applications. *Optimal dilutions/concentrations should be determined by the researcher.Suggested dilutionReferenceICC/IF1:100-1:1000* IHC (Formalin-fixed paraffin-embedded sections)1:100-1:1000* Western blot1:500-1:10000*</p>
Comment:	Positive Control: 293T , mouse brain , human CCN3-transfected 293T cells
Restrictions:	For Research Use only

## Handling

Format:	Liquid
Concentration:	1 mg/mL
Buffer:	0.1M Tris, 0.1M Glycine, 10 % Glycerol ( pH 7). 0.01 % Thimerosal was added as a preservative.
Preservative:	Thimerosal (Merthiolate)
Precaution of Use:	This product contains Thimerosal (Merthiolate): a POISONOUS AND HAZARDOUS SUBSTANCE which should be handled by trained staff only.
Storage:	-20 °C
Storage Comment:	Keep as concentrated solution. Aliquot and store at -20°C or below. Avoid multiple freeze-thaw

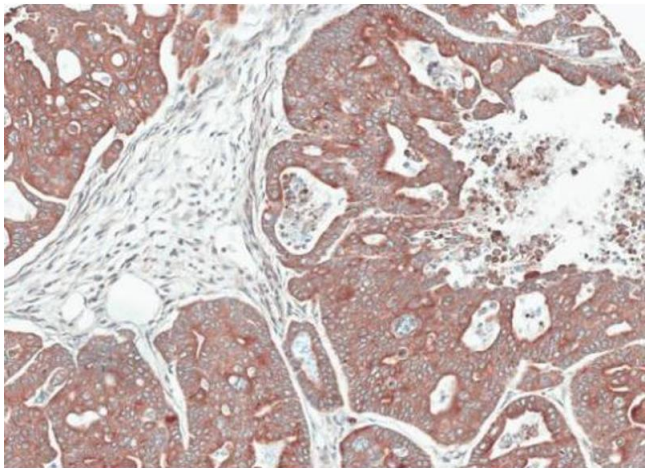
cycles.

Images



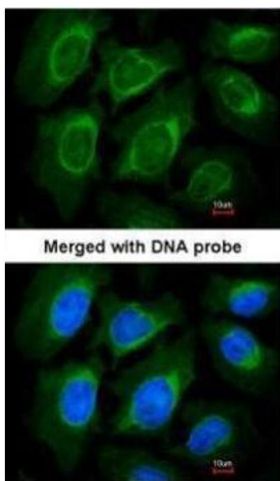
Western Blotting

**Image 1.** WB Image Sample(30 ug whole cell lysate) A:293T  
12% SDS PAGE antibody diluted at 1:1000



Immunohistochemistry

**Image 2.** IHC-P Image Immunohistochemical analysis of paraffin-embedded gastric cancer N87 xenograft, using NOV, antibody at 1:100 dilution.



Immunofluorescence

**Image 3.** ICC/IF Image Immunofluorescence analysis of paraformaldehyde-fixed HeLa, using CCN3 , antibody at 1:200 dilution.

Please check the [product details page](#) for more images. Overall 5 images are available for ABIN2855618.