

Datasheet for ABIN2855619  
**anti-Zinc Finger and SCAN Domain Containing 31 (ZSCAN31)  
(Center) antibody**



[Go to Product page](#)

2 Images

## Overview

Quantity:	100 µL
Target:	Zinc Finger and SCAN Domain Containing 31 (ZSCAN31)
Binding Specificity:	Center
Reactivity:	Human
Host:	Rabbit
Clonality:	Polyclonal
Conjugate:	Un-conjugated
Application:	Western Blotting (WB), Immunohistochemistry (Paraffin-embedded Sections) (IHC (p))

## Product Details

Immunogen:	Recombinant protein encompassing a sequence within the center region of human ZNF323. The exact sequence is proprietary.
Isotype:	IgG
Characteristics:	Rabbit Polyclonal antibody to ZNF323 (zinc finger protein 323) ZNF323 antibody [N1C3]
Purification:	Purified by antigen-affinity chromatography.

## Target Details

Target:	Zinc Finger and SCAN Domain Containing 31 (ZSCAN31)
Alternative Name:	ZNF323 ( <a href="#">ZSCAN31 Products</a> )

## Target Details

Background: ZNF323 is a member of the subfamily of C2H2 Kruppel-like zinc finger transcription factors that have a SCAN box domain (Pi et al., 2002 [PubMed 12147252]).[supplied by OMIM]

Cellular Localization: Nucleus

Molecular Weight: 47 kDa

Gene ID: 64288

## Application Details

Application Notes: Suggested dilution Reference IHC (Formalin-fixed paraffin-embedded sections) 1:100-1:1000\* Western blot 1:1000-1:10000\* Not tested in other applications. \*Optimal dilutions/concentrations should be determined by the researcher.Suggested dilutionReferenceIHC (Formalin-fixed paraffin-embedded sections)1:100-1:1000\* Western blot1:1000-1:10000\*

Comment: Positive Control: HeLa

Restrictions: For Research Use only

## Handling

Format: Liquid

Concentration: 1 mg/mL

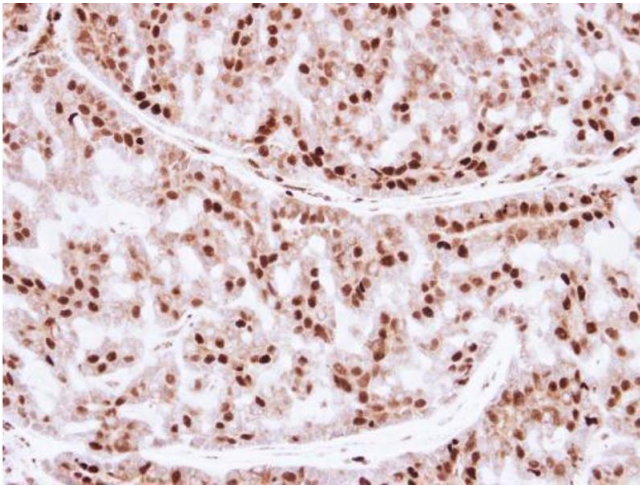
Buffer: 1XPBS, 1 % BSA, 20 % Glycerol ( pH 7). 0.01 % Thimerosal was added as a preservative.

Preservative: Thimerosal (Merthiolate)

Precaution of Use: This product contains Thimerosal (Merthiolate): a POISONOUS AND HAZARDOUS SUBSTANCE which should be handled by trained staff only.

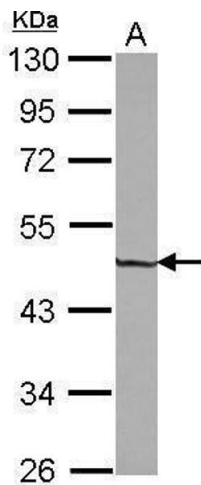
Storage: -20 °C

Storage Comment: Keep as concentrated solution. Aliquot and store at -20°C or below. Avoid multiple freeze-thaw cycles.



Immunohistochemistry

**Image 1.** IHC-P Image Immunohistochemical analysis of paraffin-embedded human breast cancer, using ZNF323, antibody at 1:250 dilution.



Western Blotting

**Image 2.** WB Image Sample (30 ug of whole cell lysate) A: HeLa 10% SDS PAGE antibody diluted at 1:5000