

Datasheet for ABIN2855620

anti-SCPEP1 antibody**2** Images[Go to Product page](#)

Overview

Quantity:	100 µL
Target:	SCPEP1
Reactivity:	Human
Host:	Rabbit
Clonality:	Polyclonal
Conjugate:	This SCPEP1 antibody is un-conjugated
Application:	Western Blotting (WB), Immunofluorescence (IF), Immunocytochemistry (ICC)

Product Details

Immunogen:	Recombinant protein encompassing a sequence within the center region of human RISC. The exact sequence is proprietary.
Isotype:	IgG
Cross-Reactivity:	Human
Characteristics:	Rabbit polyclonal antibody to RISC (serine carboxypeptidase 1) RISC antibody [N3C3]
Purification:	Purified by antigen-affinity chromatography.

Target Details

Target:	SCPEP1
Alternative Name:	serine carboxypeptidase 1 (SCPEP1 Products)

Target Details

Background: May be involved in vascular wall and kidney homeostasis.

Cellular Localization: Secreted

Molecular Weight: 51 kDa

Gene ID: 59342

UniProt: [Q9HB40](#)

Application Details

Application Notes: WB: 1:500-1:3000. ICC/IF: 1:100-1:1000. Optimal dilutions/concentrations should be determined by the researcher. Not tested in other applications.

Comment: Positive Control: A431

Restrictions: For Research Use only

Handling

Format: Liquid

Concentration: 1 mg/mL

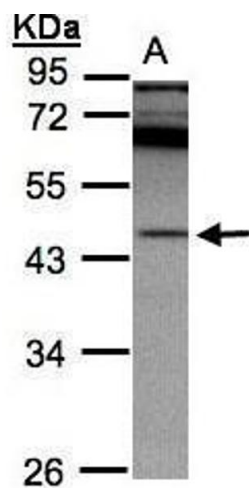
Buffer: 0.1M Tris-Glycine (pH 7), 10 % Glycerol, 0.01 % Thimerosal

Preservative: Thimerosal (Merthiolate)

Precaution of Use: This product contains Thimerosal (Merthiolate): a POISONOUS AND HAZARDOUS SUBSTANCE which should be handled by trained staff only.

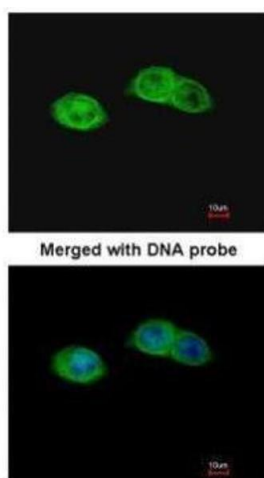
Storage: 4 °C,-20 °C

Storage Comment: Store as concentrated solution. Centrifuge briefly prior to opening vial. For short-term storage (1-2 weeks), store at 4°C. For long-term storage, aliquot and store at -20°C or below. Avoid multiple freeze-thaw cycles.



Western Blotting

Image 1. WB Image Sample(30 ug whole cell lysate) A:A431, 10% SDS PAGE antibody diluted at 1:2000



Immunofluorescence

Image 2. ICC/IF Image Immunofluorescence analysis of paraformaldehyde-fixed A431, using RISC, antibody at 1:200 dilution.