

Datasheet for ABIN2855623
anti-DDX18 antibody (Center)[Go to Product page](#)

2 Images

Overview

Quantity:	100 µL
Target:	DDX18
Binding Specificity:	Center
Reactivity:	Human
Host:	Rabbit
Clonality:	Polyclonal
Conjugate:	This DDX18 antibody is un-conjugated
Application:	Western Blotting (WB), Immunofluorescence (IF), Immunocytochemistry (ICC)

Product Details

Immunogen:	Recombinant protein encompassing a sequence within the center region of human DDX18. The exact sequence is proprietary.
Isotype:	IgG
Characteristics:	Rabbit Polyclonal antibody to DDX18 (DEAD (Asp-Glu-Ala-Asp) box polypeptide 18) DDX18 antibody
Purification:	Purified by antigen-affinity chromatography.

Target Details

Target:	DDX18
Alternative Name:	DDX18 (DDX18 Products)

Target Details

Background: DEAD box proteins, characterized by the conserved motif Asp-Glu-Ala-Asp (DEAD), are putative RNA helicases. They are implicated in a number of cellular processes involving alteration of RNA secondary structure such as translation initiation, nuclear and mitochondrial splicing, and ribosome and spliceosome assembly. Based on their distribution patterns, some members of this family are believed to be involved in embryogenesis, spermatogenesis, and cellular growth and division. This gene encodes a DEAD box protein, and it is activated by Myc protein.

Gene ID: 8886

Application Details

Application Notes: Suggested dilution Reference ICC/IF 1:100-1:1000* Western blot 1:500-1:3000* Not tested in other applications. *Optimal dilutions/concentrations should be determined by the researcher.Suggested dilutionReferenceICC/IF1:100-1:1000* Western blot1:500-1:3000*

Comment: Positive Control: Jurkat , Raji , NCI-H929

Restrictions: For Research Use only

Handling

Format: Liquid

Concentration: 1 mg/mL

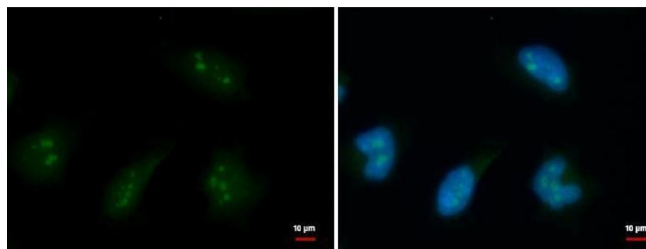
Buffer: 1XPBS, 20 % Glycerol (pH 7). 0.01 % Thimerosal was added as a preservative.

Preservative: Thimerosal (Merthiolate)

Precaution of Use: This product contains Thimerosal (Merthiolate): a POISONOUS AND HAZARDOUS SUBSTANCE which should be handled by trained staff only.

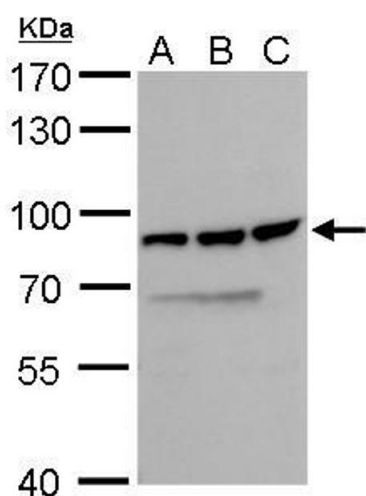
Storage: -20 °C

Storage Comment: Keep as concentrated solution. Aliquot and store at -20°C or below. Avoid multiple freeze-thaw cycles.



Immunofluorescence

Image 1. ICC/IF Image DDX18 antibody detects DDX18 protein at nucleolus by immunofluorescent analysis. Sample: HeLa cells were fixed in 4% paraformaldehyde/PBS for 15 min. Green: DDX18 protein stained by DDX18 antibody, diluted at 1:500. Blue: Hoechst 33342 staining.



Western Blotting

Image 2. WB Image DDX18 antibody detects DDX18 protein by Western blot analysis. A. 30 µg Jurkat whole cell lysate/extract B. 30 µg Raji whole cell lysate/extract C. 30 µg NCI-H929 whole cell lysate/extract 7.5 % SDS-PAGE DDX18 antibody, dilution: 1:1000