

Datasheet for ABIN2855627  
**anti-PCOLCE2 antibody**[Go to Product page](#)

## 1 Image

## Overview

Quantity:	100 µL
Target:	PCOLCE2
Reactivity:	Human
Host:	Rabbit
Clonality:	Polyclonal
Conjugate:	This PCOLCE2 antibody is un-conjugated
Application:	Immunocytochemistry (ICC), Immunofluorescence (IF)

## Product Details

Immunogen:	Recombinant protein encompassing a sequence within the center region of human PCOLCE2. The exact sequence is proprietary.
Isotype:	IgG
Cross-Reactivity:	Human
Characteristics:	Rabbit Polyclonal antibody to PCOLCE2 (procollagen C-endopeptidase enhancer 2) PCOLCE2 antibody
Purification:	Purified by antigen-affinity chromatography.

## Target Details

Target:	PCOLCE2
Alternative Name:	procollagen C-endopeptidase enhancer 2 ( <a href="#">PCOLCE2 Products</a> )

## Target Details

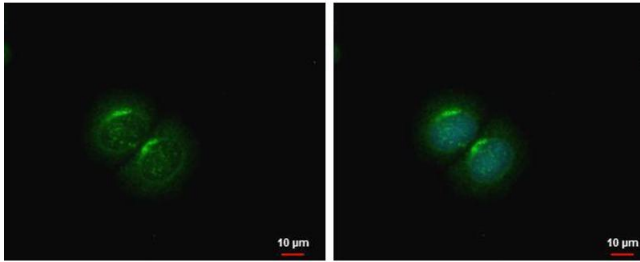
Background:	Cellular Localization: Secreted
Molecular Weight:	46 kDa
Gene ID:	26577
UniProt:	<a href="#">Q9UKZ9</a>

## Application Details

Application Notes:	ICC/IF: 1:100-1:1000. Optimal dilutions/concentrations should be determined by the researcher. Not tested in other applications.
Restrictions:	For Research Use only

## Handling

Format:	Liquid
Concentration:	1 mg/mL
Buffer:	1XPBS ( pH 7), 20 % Glycerol, 0.01 % Thimerosal
Preservative:	Thimerosal (Merthiolate)
Precaution of Use:	This product contains Thimerosal (Merthiolate): a POISONOUS AND HAZARDOUS SUBSTANCE which should be handled by trained staff only.
Storage:	4 °C,-20 °C
Storage Comment:	Store as concentrated solution. Centrifuge briefly prior to opening vial. For short-term storage (1-2 weeks), store at 4°C. For long-term storage, aliquot and store at -20°C or below. Avoid multiple freeze-thaw cycles.



#### Immunofluorescence

**Image 1.** ICC/IF Image PCOLCE2 antibody detects PCOLCE2 protein at cytoplasm by immunofluorescent analysis. Sample: MCF-7 cells were fixed in ice-cold MeOH for 5 min. Green: PCOLCE2 protein stained by PCOLCE2 antibody, diluted at 1:500. Blue: Hoechst 33342 staining.