

Datasheet for ABIN2855630

anti-TIE1 antibody**2** Images[Go to Product page](#)

Overview

Quantity:	100 µL
Target:	TIE1
Reactivity:	Human
Host:	Rabbit
Clonality:	Polyclonal
Conjugate:	This TIE1 antibody is un-conjugated
Application:	Western Blotting (WB), Immunohistochemistry (Paraffin-embedded Sections) (IHC (p))

Product Details

Immunogen:	Recombinant protein encompassing a sequence within the center region of human TIE1. The exact sequence is proprietary.
Isotype:	IgG
Cross-Reactivity:	Human
Characteristics:	Rabbit Polyclonal antibody to TIE1 (tyrosine kinase with immunoglobulin-like and EGF-like domains 1) TIE1 antibody
Purification:	Purified by antigen-affinity chromatography.

Target Details

Target:	TIE1
Alternative Name:	tyrosine kinase with immunoglobulin like and EGF like domains 1 (TIE1 Products)

Target Details

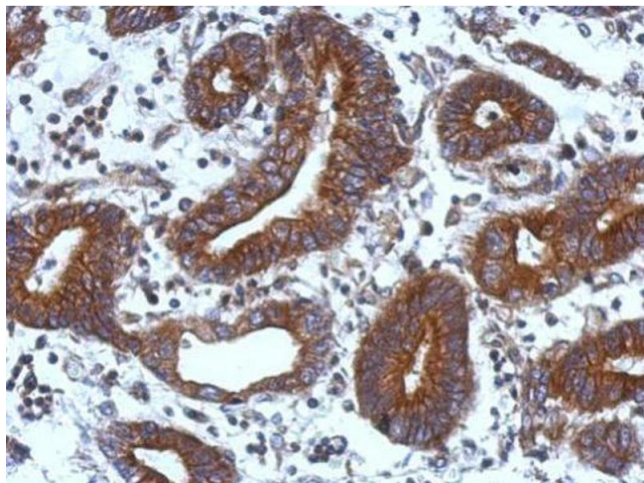
Background:	Probable protein tyrosine-kinase transmembrane receptor.
	Cellular Localization: Membrane, Single-pass type I membrane protein
Molecular Weight:	125 kDa
Gene ID:	7075
UniProt:	P35590
Pathways:	RTK Signaling

Application Details

Application Notes:	WB: 1:500-1:3000. IHC-P: 1:100-1:1000. Optimal dilutions/concentrations should be determined by the researcher. Not tested in other applications.
Comment:	Positive Control: HUVEC
Restrictions:	For Research Use only

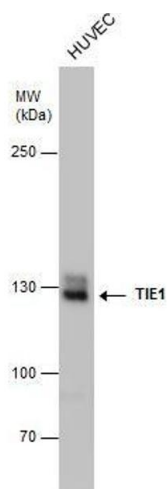
Handling

Format:	Liquid
Concentration:	1 mg/mL
Buffer:	1XPBS (pH 7), 20 % Glycerol, 0.025 % ProClin 300
Preservative:	ProClin
Precaution of Use:	This product contains ProClin: a POISONOUS AND HAZARDOUS SUBSTANCE which should be handled by trained staff only.
Storage:	4 °C, -20 °C
Storage Comment:	Store as concentrated solution. Centrifuge briefly prior to opening vial. For short-term storage (1-2 weeks), store at 4°C. For long-term storage, aliquot and store at -20°C or below. Avoid multiple freeze-thaw cycles.



Immunohistochemistry

Image 1. IHC-P Image Immunohistochemical analysis of paraffin-embedded human colon carcinoma, using TIE1, antibody at 1:500 dilution.



Western Blotting

Image 2. WB Image TIE1 antibody detects TIE1 protein by western blot analysis. Whole cell extracts (30 µg) was separated by 5% SDS-PAGE, and the membrane was blotted with TIE1 antibody, diluted at 1:500.