

Datasheet for ABIN2855632
anti-ACVR1C/ALK7 antibody (Center)[Go to Product page](#)

2 Images

Overview

Quantity:	100 µL
Target:	ACVR1C/ALK7 (ACVR1C)
Binding Specificity:	Center
Reactivity:	Human
Host:	Rabbit
Clonality:	Polyclonal
Conjugate:	This ACVR1C/ALK7 antibody is un-conjugated
Application:	Western Blotting (WB), Immunohistochemistry (Paraffin-embedded Sections) (IHC (p))

Product Details

Immunogen:	Recombinant protein encompassing a sequence within the center region of human Activin A Receptor Type IC. The exact sequence is proprietary.
Isotype:	IgG
Cross-Reactivity:	Mouse (Murine), Rat (Rattus), Cow (Bovine)
Cross-Reactivity (Details):	Mouse (93 %), Rat (94 %), Bovine (97 %)
Characteristics:	Rabbit Polyclonal antibody to Activin A Receptor Type IC (activin A receptor, type IC) Activin A Receptor Type IC antibody
Purification:	Purified by antigen-affinity chromatography.

Target Details

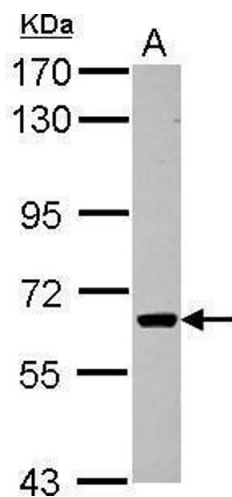
Target:	ACVR1C/ALK7 (ACVR1C)
Alternative Name:	Activin A Receptor Type IC (ACVR1C Products)
Background:	<p>ACVR1C is a type I receptor for the TGFB (see MIM 190180) family of signaling molecules. Upon ligand binding, type I receptors phosphorylate cytoplasmic SMAD transcription factors, which then translocate to the nucleus and interact directly with DNA or in complex with other transcription factors (Bondestam et al., 2001 [PubMed 12063393]).[supplied by OMIM]</p> <p>Cellular Localization: Membrane</p>
Molecular Weight:	55 kDa
Gene ID:	130399
Pathways:	Negative Regulation of Hormone Secretion , Positive Regulation of Endopeptidase Activity

Application Details

Application Notes:	<p>Suggested dilution Reference IHC (Formalin-fixed paraffin-embedded sections) 1:100-1:1000* Western blot 1:500-1:3000* Not tested in other applications. *Optimal dilutions/concentrations should be determined by the researcher.Suggested dilutionReferenceIHC (Formalin-fixed paraffin-embedded sections)1:100-1:1000* Western blot1:500-1:3000*</p>
Comment:	Positive Control: HepG2
Restrictions:	For Research Use only

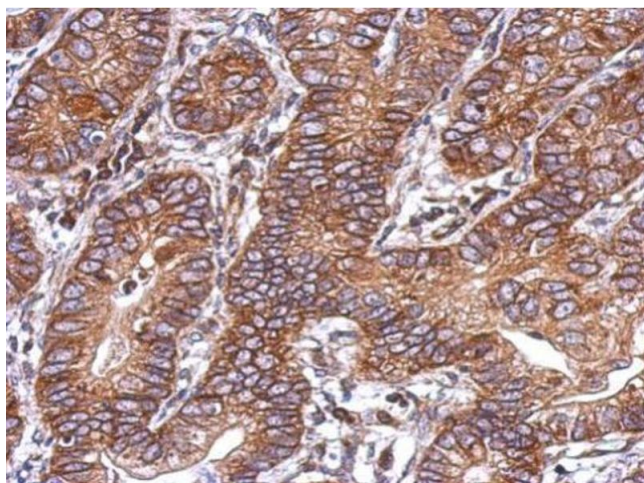
Handling

Format:	Liquid
Concentration:	1 mg/mL
Buffer:	1XPBS, 1 % BSA, 20 % Glycerol (pH 7). 0.01 % Thimerosal was added as a preservative.
Preservative:	Thimerosal (Merthiolate)
Precaution of Use:	This product contains Thimerosal (Merthiolate): a POISONOUS AND HAZARDOUS SUBSTANCE which should be handled by trained staff only.
Storage:	-20 °C
Storage Comment:	Keep as concentrated solution. Aliquot and store at -20°C or below. Avoid multiple freeze-thaw cycles.



Western Blotting

Image 1. WB Image Sample (30 ug of whole cell lysate) A: HepG2 7.5% SDS PAGE antibody diluted at 1:1000



Immunohistochemistry

Image 2. IHC-P Image Immunohistochemical analysis of paraffin-embedded human colon carcinoma, using Activin A Receptor Type IC, antibody at 1:500 dilution.