

Datasheet for ABIN2855635

anti-PLAT antibody

6 Images

1 Publication

[Go to Product page](#)

Overview

Quantity:	100 µL
Target:	PLAT
Reactivity:	Human
Host:	Rabbit
Clonality:	Polyclonal
Conjugate:	This PLAT antibody is un-conjugated
Application:	Western Blotting (WB), Immunohistochemistry (Paraffin-embedded Sections) (IHC (p))

Product Details

Immunogen:	Recombinant protein encompassing a sequence within the center region of human tPA. The exact sequence is proprietary.
Isotype:	IgG
Cross-Reactivity:	Human, Mouse, Rat
Characteristics:	Rabbit Polyclonal antibody to tPA (plasminogen activator, tissue) tPA antibody
Purification:	Purified by antigen-affinity chromatography.

Target Details

Target:	PLAT
Alternative Name:	plasminogen activator, tissue type (PLAT Products)

Target Details

Background: This gene encodes tissue-type plasminogen activator, a secreted serine protease which converts the proenzyme plasminogen to plasmin, a fibrinolytic enzyme. Tissue-type plasminogen activator is synthesized as a single chain which is cleaved by plasmin to a two chain disulfide linked protein. This enzyme plays a role in cell migration and tissue remodeling. Increased enzymatic activity causes hyperfibrinolysis, which manifests as excessive bleeding, decreased activity leads to hypofibrinolysis which can result in thrombosis or embolism. Alternative splicing of this gene results in multiple transcript variants encoding different isoforms.

Cellular Localization: Secreted , extracellular space

Molecular Weight: 63 kDa

Gene ID: 5327

UniProt: [P00750](#)

Pathways: [Autophagy](#), [Smooth Muscle Cell Migration](#), [Platelet-derived growth Factor Receptor Signaling](#), [SARS-CoV-2 Protein Interactome](#)

Application Details

Application Notes: WB: 1:500-1:3000. IHC-P: 1:100-1:1000. Optimal dilutions/concentrations should be determined by the researcher. Not tested in other applications.

Comment: Positive Control: 293T , Neuro2A , PC-12 , human plasma

Restrictions: For Research Use only

Handling

Format: Liquid

Concentration: 0.15 mg/mL

Buffer: 1XPBS (pH 7), 1 % BSA, 20 % Glycerol, 0.025 % ProClin 300

Preservative: ProClin

Precaution of Use: This product contains ProClin: a POISONOUS AND HAZARDOUS SUBSTANCE which should be handled by trained staff only.

Storage: 4 °C,-20 °C

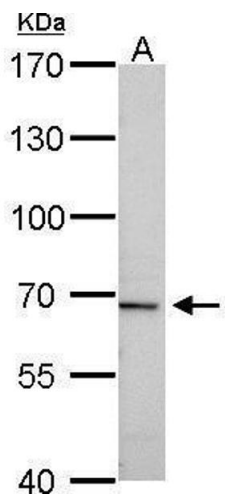
Storage Comment: Store as concentrated solution. Centrifuge briefly prior to opening vial. For short-term storage

(1-2 weeks), store at 4°C. For long-term storage, aliquot and store at -20°C or below. Avoid multiple freeze-thaw cycles.

Publications

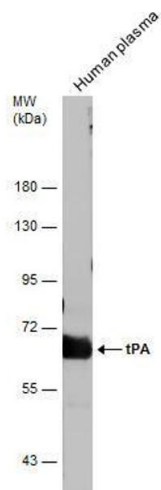
Product cited in: Piquet, Le Parc, Bai, Chevallier, Adam, Polo: "The Histone Chaperone FACT Coordinates H2A.X-Dependent Signaling and Repair of DNA Damage." in: **Molecular cell**, Vol. 72, Issue 5, pp. 888-901.e7, (2018) ([PubMed](#)).

Validation report #104383 for Cleavage Under Targets and Release Using Nuclease (CUT&RUN)



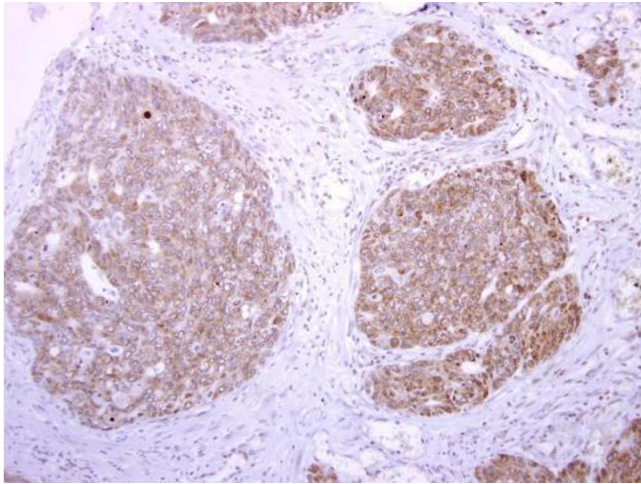
Western Blotting

Image 1. WB Image tPA antibody detects PLAT protein by Western blot analysis. A. 30 µg PC-12 whole cell lysate/extract 7.5 % SDS-PAGE tPA antibody , dilution: 1:1000



Western Blotting

Image 2. WB Image Human tissue extract (30 µg) was separated by 7.5% SDS-PAGE, and the membrane was blotted with tPA antibody , diluted at 1:500.



Immunohistochemistry

Image 3. IHC-P Image tPA antibody detects tPA protein at cytoplasm on human colon carcinoma by immunohistochemical analysis. Sample: Paraffin-embedded colon carcinoma. tPA antibody , dilution: 1:250.

Please check the [product details page](#) for more images. Overall 6 images are available for ABIN2855635.