

Datasheet for ABIN2855640
anti-VAV1 antibody (Center)[Go to Product page](#)

3 Images

Overview

Quantity:	100 µL
Target:	VAV1
Binding Specificity:	Center
Reactivity:	Human, Mouse
Host:	Rabbit
Clonality:	Polyclonal
Conjugate:	This VAV1 antibody is un-conjugated
Application:	Western Blotting (WB), Immunohistochemistry (Paraffin-embedded Sections) (IHC (p))

Product Details

Immunogen:	Recombinant protein encompassing a sequence within the center region of human VAV1. The exact sequence is proprietary.
Isotype:	IgG
Cross-Reactivity:	Mouse (Murine), Rat (Rattus), Cow (Bovine)
Cross-Reactivity (Details):	Mouse (92 %), Rat (92 %), Bovine (96 %)
Characteristics:	Rabbit Polyclonal antibody to VAV1 (vav 1 guanine nucleotide exchange factor) VAV1 antibody
Purification:	Purified by antigen-affinity chromatography.

Target Details

Target:	VAV1
Alternative Name:	VAV1 (VAV1 Products)
Background:	<p>The protein encoded by this proto-oncogene is a member of the Dbl family of guanine nucleotide exchange factors (GEF) for the Rho family of GTP binding proteins. The protein is important in hematopoiesis, playing a role in T-cell and B-cell development and activation. This particular GEF has been identified as the specific binding partner of Nef proteins from HIV-1. Coexpression and binding of these partners initiates profound morphological changes, cytoskeletal rearrangements and the JNK/SAPK signaling cascade, leading to increased levels of viral transcription and replication.</p>
Molecular Weight:	98 kDa
Gene ID:	7409
Pathways:	TCR Signaling , Fc-epsilon Receptor Signaling Pathway , EGFR Signaling Pathway , Neurotrophin Signaling Pathway , CXCR4-mediated Signaling Events , BCR Signaling

Application Details

Application Notes:	<p>Suggested dilution Reference IHC (Formalin-fixed paraffin-embedded sections) 1:100-1:1000* Western blot 1:500-1:3000* Not tested in other applications. *Optimal dilutions/concentrations should be determined by the researcher.Suggested dilutionReferenceIHC (Formalin-fixed paraffin-embedded sections)1:100-1:1000* Western blot1:500-1:3000*</p>
Comment:	Positive Control: Molt-4 , Raji , BCL-1
Restrictions:	For Research Use only

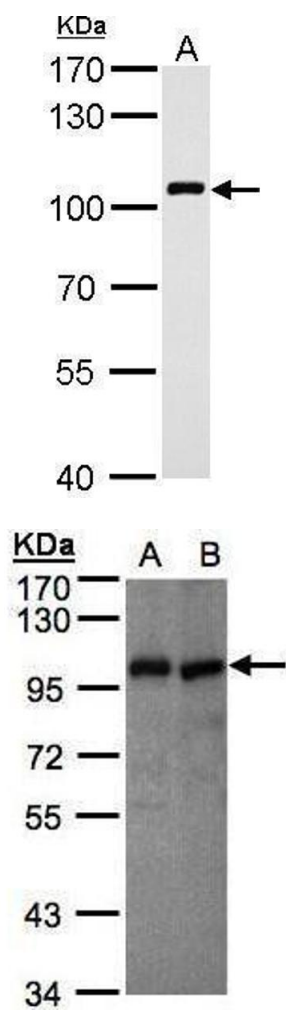
Handling

Format:	Liquid
Concentration:	0.33 mg/mL
Buffer:	0.1M Tris, 0.1M Glycine, 10 % Glycerol (pH 7). 0.01 % Thimerosal was added as a preservative.
Preservative:	Thimerosal (Merthiolate)
Precaution of Use:	This product contains Thimerosal (Merthiolate): a POISONOUS AND HAZARDOUS SUBSTANCE which should be handled by trained staff only.
Storage:	-20 °C

Handling

Storage Comment: Keep as concentrated solution. Aliquot and store at -20°C or below. Avoid multiple freeze-thaw cycles.

Images

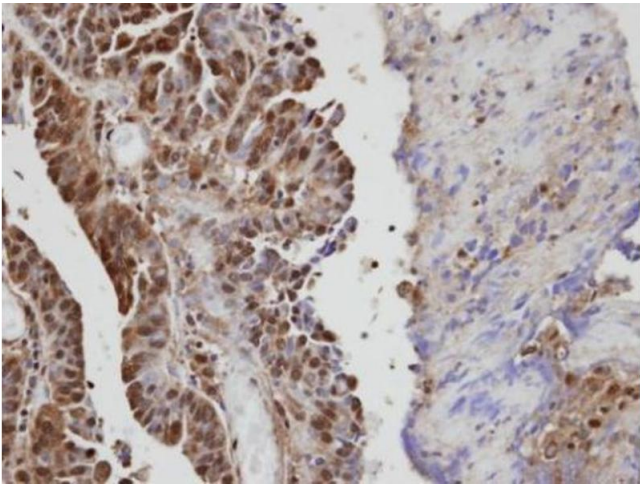


Western Blotting

Image 1. WB Image VAV1 antibody detects VAV1 protein by Western blot analysis. A. 30 µg BCL-1 whole cell lysate/extract 7.5 % SDS-PAGE VAV1 antibody , dilution: 1:1000

Western Blotting

Image 2. WB Image Sample(30 µg of whole cell lysate) A:MOLT4, B:Raji , 7.5% SDS PAGE antibody diluted at 1:500



Immunohistochemistry

Image 3. IHC-P Image Immunohistochemical analysis of paraffin-embedded human serous ovarian cancer, using VAV1, antibody at 1:100 dilution.