

Datasheet for ABIN2855641
anti-SCYL3 antibody (Center)

3 Images

[Go to Product page](#)

Overview

Quantity:	100 µL
Target:	SCYL3
Binding Specificity:	Center
Reactivity:	Human
Host:	Rabbit
Clonality:	Polyclonal
Conjugate:	This SCYL3 antibody is un-conjugated
Application:	Western Blotting (WB), Immunofluorescence (IF), Immunohistochemistry (Paraffin-embedded Sections) (IHC (p)), Immunocytochemistry (ICC)

Product Details

Immunogen:	Recombinant protein encompassing a sequence within the center region of human SCY1 like 3. The exact sequence is proprietary.
Isotype:	IgG
Characteristics:	Rabbit polyclonal antibody to SCY1 like 3 (SCY1-like 3 (S. cerevisiae)) SCY1 like 3 antibody [N1C3]
Purification:	Purified by antigen-affinity chromatography.

Target Details

Target:	SCYL3
Alternative Name:	SCY1 Like 3 (SCYL3 Products)

Target Details

Background: May play a role in regulating cell adhesion/migration complexes in migrating cells.

Cellular Localization: Cytoplasm , Golgi apparatus , Cell projection , lamellipodium

Molecular Weight: 83 kDa

Gene ID: 57147

Application Details

Application Notes: Suggested dilution Reference ICC/IF 1:100-1:1000* IHC (Formalin-fixed paraffin-embedded sections) 1:100-1:1000* Western blot 1:500-1:3000* Not tested in other applications. *Optimal dilutions/concentrations should be determined by the researcher.Suggested dilutionReferenceICC/IF1:100-1:1000* IHC (Formalin-fixed paraffin-embedded sections)1:100-1:1000* Western blot1:500-1:3000*

Comment: Positive Control: 293T , A431 , H1299 , HeLa , HepG2 , Molt-4 , Raji

Restrictions: For Research Use only

Handling

Format: Liquid

Concentration: 1 mg/mL

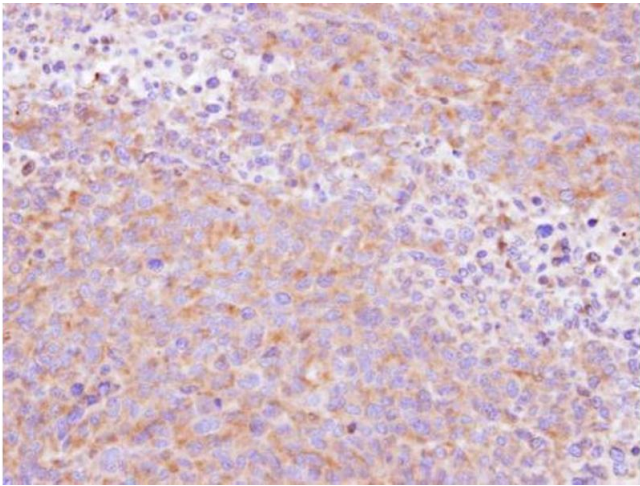
Buffer: 0.1M Tris, 0.1M Glycine, 10 % Glycerol (pH 7). 0.01 % Thimerosal was added as a preservative.

Preservative: Thimerosal (Merthiolate)

Precaution of Use: This product contains Thimerosal (Merthiolate): a POISONOUS AND HAZARDOUS SUBSTANCE which should be handled by trained staff only.

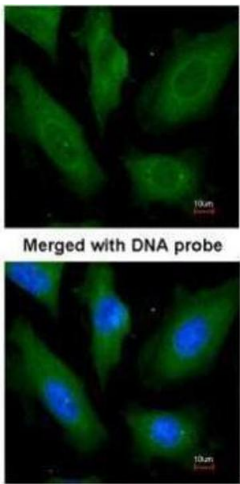
Storage: -20 °C

Storage Comment: Keep as concentrated solution. Aliquot and store at -20°C or below. Avoid multiple freeze-thaw cycles.



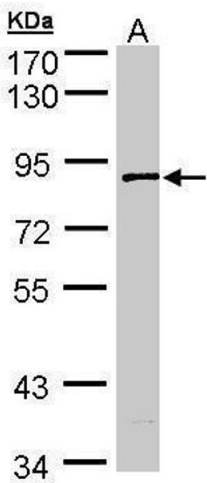
Immunohistochemistry

Image 1. IHC-P Image Immunohistochemical analysis of paraffin-embedded H1299 xenograft , using SCY1 like 3, antibody at 1:500 dilution.



Immunofluorescence

Image 2. ICC/IF Image Immunofluorescence analysis of paraformaldehyde-fixed HeLa, using SCY1 like 3, antibody at 1:200 dilution.



Western Blotting

Image 3. WB Image Sample (30 ug of whole cell lysate) A: A431 7.5% SDS PAGE antibody diluted at 1:1000