

Datasheet for ABIN2855642

anti-PDE8A antibody[Go to Product page](#)**1** Image

Overview

Quantity:	100 µL
Target:	PDE8A
Reactivity:	Human
Host:	Rabbit
Clonality:	Polyclonal
Conjugate:	This PDE8A antibody is un-conjugated
Application:	Immunofluorescence (IF), Immunocytochemistry (ICC)

Product Details

Immunogen:	Recombinant protein encompassing a sequence within the center region of human PDE8A. The exact sequence is proprietary.
Isotype:	IgG
Cross-Reactivity:	Human
Characteristics:	Rabbit Polyclonal antibody to PDE8A (phosphodiesterase 8A) PDE8A antibody
Purification:	Purified by antigen-affinity chromatography.

Target Details

Target:	PDE8A
Alternative Name:	phosphodiesterase 8A (PDE8A Products)

Target Details

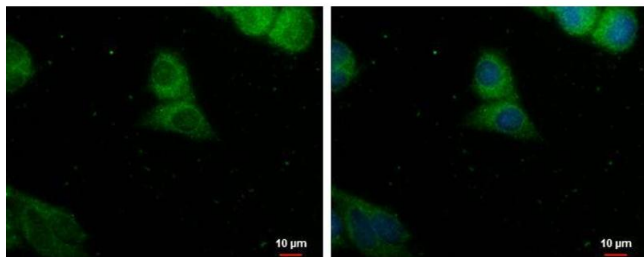
Background:	Phosphodiesterases (PDEs) regulate the intracellular levels of cAMP and cGMP. These cyclic nucleotides play an important role as second messengers in multiple physiologic processes, including regulation of vascular resistance, cardiac output, visceral motility, immune response, inflammation, neuroplasticity, vision, and reproduction. PDEs comprise a large superfamily of enzymes divided into 10 families. Different PDEs can be distinguished by their structure, tissue expression, localization, substrate specificity, regulation, and sensitivity to PDE inhibitors. Diversity in structure and specificity of function make PDEs promising targets for the pharmacotherapy of diseases modulated by cyclic nucleotide signaling (Hetman et al., MIM 2000). See MIM 171885.[supplied by OMIM]
Molecular Weight:	93 kDa
Gene ID:	5151
UniProt:	O60658
Pathways:	cAMP Metabolic Process

Application Details

Application Notes:	ICC/IF: 1:100-1:1000. Optimal dilutions/concentrations should be determined by the researcher. Not tested in other applications.
Restrictions:	For Research Use only

Handling

Format:	Liquid
Concentration:	1 mg/mL
Buffer:	1XPBS (pH 7), 20 % Glycerol, 0.01 % Thimerosal
Preservative:	Thimerosal (Merthiolate)
Precaution of Use:	This product contains Thimerosal (Merthiolate): a POISONOUS AND HAZARDOUS SUBSTANCE which should be handled by trained staff only.
Storage:	4 °C, -20 °C
Storage Comment:	Store as concentrated solution. Centrifuge briefly prior to opening vial. For short-term storage (1-2 weeks), store at 4°C. For long-term storage, aliquot and store at -20°C or below. Avoid multiple freeze-thaw cycles.



Immunofluorescence

Image 1. ICC/IF Image PDE8A antibody detects PDE8A protein at cytoplasm by immunofluorescent analysis. Sample: HepG2 cells were fixed in ice-cold MeOH for 5 min. Green: PDE8A protein stained by PDE8A antibody, diluted at 1:500. Blue: Hoechst 33342 staining.