

Datasheet for ABIN2855643

**anti-CDKL3 antibody**[Go to Product page](#)**1** Image

## Overview

Quantity:	100 µL
Target:	CDKL3
Reactivity:	Human
Host:	Rabbit
Clonality:	Polyclonal
Conjugate:	This CDKL3 antibody is un-conjugated
Application:	Western Blotting (WB)

## Product Details

Immunogen:	Recombinant protein encompassing a sequence within the center region of human NKIAMRE. The exact sequence is proprietary.
Isotype:	IgG
Cross-Reactivity:	Human
Characteristics:	Rabbit Polyclonal antibody to NKIAMRE (cyclin-dependent kinase-like 3) NKIAMRE antibody [N1C1]
Purification:	Purified by antigen-affinity chromatography.

## Target Details

Target:	CDKL3
Alternative Name:	cyclin dependent kinase like 3 ( <a href="#">CDKL3 Products</a> )

## Target Details

**Background:** The protein encoded by this gene is a member of cyclin-dependent protein kinase (CDK) family. CDK family members are highly similar to the gene products of *Saccharomyces cerevisiae* cdc28, and *Schizosaccharomyces pombe* cdc2, and are known to be important regulators of cell cycle progression. This gene was identified as a gene absent in leukemic patients with chromosome 5q deletion. This loss may be an important determinant of dysmyelopoiesis. Alternative splicing results in multiple transcript variants encoding different isoforms.

Cellular Localization: Cytoplasm

**Molecular Weight:** 68 kDa

**Gene ID:** 51265

**UniProt:** [Q8IVW4](#)

**Pathways:** [Cell Division Cycle](#)

## Application Details

**Application Notes:** WB: 1:500-1:3000. Optimal dilutions/concentrations should be determined by the researcher. Not tested in other applications.

**Comment:** Positive Control: NT2D1 , IMR32

**Restrictions:** For Research Use only

## Handling

**Format:** Liquid

**Concentration:** 1.03 mg/mL

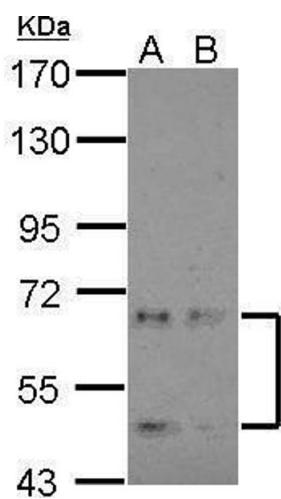
**Buffer:** 0.1M Tris-Glycine ( pH 7), 20 % Glycerol, 0.01 % Thimerosal

**Preservative:** Thimerosal (Merthiolate)

**Precaution of Use:** This product contains Thimerosal (Merthiolate): a POISONOUS AND HAZARDOUS SUBSTANCE which should be handled by trained staff only.

**Storage:** 4 °C,-20 °C

**Storage Comment:** Store as concentrated solution. Centrifuge briefly prior to opening vial. For short-term storage (1-2 weeks), store at 4°C. For long-term storage, aliquot and store at -20°C or below. Avoid multiple freeze-thaw cycles.



Western Blotting

**Image 1.** WB Image Sample (30 ug of whole cell lysate) A: NT2D1 B: IMR32 7.5% SDS PAGE antibody diluted at 1:2000