



[Go to Product page](#)

Datasheet for ABIN2855647

## anti-CYP4A11 antibody (Center)

### 3 Images

#### Overview

Quantity:	100 µL
Target:	CYP4A11
Binding Specificity:	Center
Reactivity:	Human
Host:	Rabbit
Clonality:	Polyclonal
Conjugate:	This CYP4A11 antibody is un-conjugated
Application:	Western Blotting (WB), Immunofluorescence (IF), Immunocytochemistry (ICC), Immunohistochemistry (Paraffin-embedded Sections) (IHC (p))

#### Product Details

Immunogen:	Recombinant protein encompassing a sequence within the center region of human CYP4A11. The exact sequence is proprietary.
Isotype:	IgG
Characteristics:	Rabbit polyclonal antibody to CYP4A11 (cytochrome P450, family 4, subfamily A, polypeptide 11) CYP4A11 antibody [N1C1]
Purification:	Purified by antigen-affinity chromatography.

#### Target Details

Target:	CYP4A11
---------	---------

## Target Details

---

Alternative Name:	Cytochrome P450 4A11 ( <a href="#">CYP4A11 Products</a> )
Background:	<p>This gene encodes a member of the cytochrome P450 superfamily of enzymes. The cytochrome P450 proteins are monooxygenases which catalyze many reactions involved in drug metabolism and synthesis of cholesterol, steroids and other lipids. This protein localizes to the endoplasmic reticulum and hydroxylates medium-chain fatty acids such as laurate and myristate.</p> <p>Cellular Localization: Endoplasmic reticulum membrane , Microsome membrane</p>
Molecular Weight:	59 kDa
Gene ID:	1579
Pathways:	<a href="#">Regulation of Lipid Metabolism by PPARalpha</a> , <a href="#">Monocarboxylic Acid Catabolic Process</a>

## Application Details

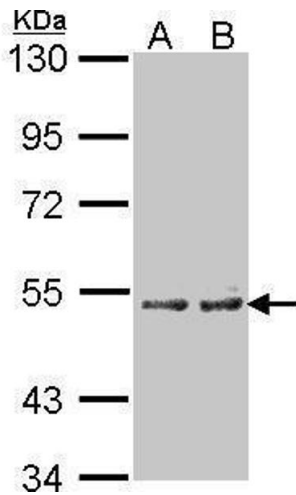
---

Application Notes:	<p>Suggested dilution Reference ICC/IF 1:100-1:1000* IHC (Formalin-fixed paraffin-embedded sections) 1:100-1:1000* Western blot 1:500-1:3000* Not tested in other applications. *Optimal dilutions/concentrations should be determined by the researcher.Suggested dilutionReferenceICC/IF1:100-1:1000* IHC (Formalin-fixed paraffin-embedded sections)1:100-1:1000* Western blot1:500-1:3000*</p>
Comment:	Positive Control: 293T , A431 , H1299 , HeLaS3 , HepG2 , Raji
Restrictions:	For Research Use only

## Handling

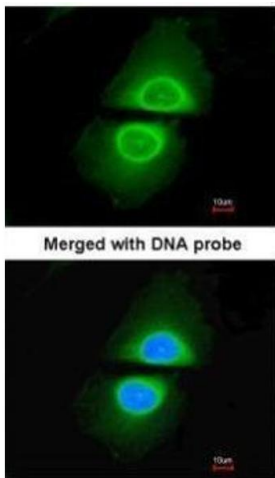
---

Format:	Liquid
Concentration:	0.57 mg/mL
Buffer:	0.1M Tris, 0.1M Glycine, 10 % Glycerol ( pH 7). 0.01 % Thimerosal was added as a preservative.
Preservative:	Thimerosal (Merthiolate)
Precaution of Use:	This product contains Thimerosal (Merthiolate): a POISONOUS AND HAZARDOUS SUBSTANCE which should be handled by trained staff only.
Storage:	-20 °C
Storage Comment:	Keep as concentrated solution. Aliquot and store at -20°C or below. Avoid multiple freeze-thaw cycles.



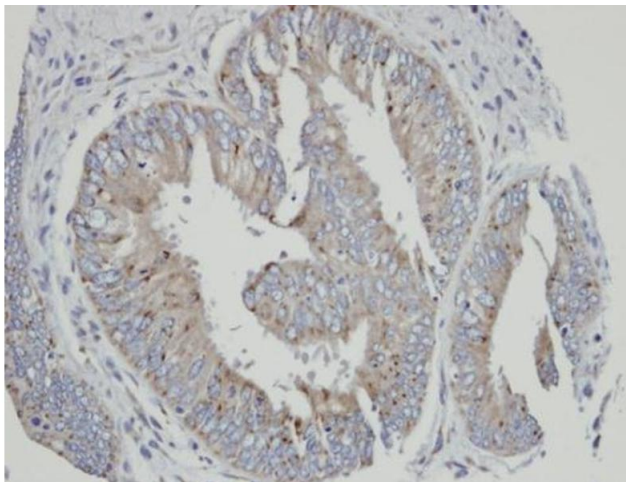
### Western Blotting

**Image 1.** WB Image Sample(30 µg of whole cell lysate)  
A:A431, B:H1299 7.5% SDS PAGE antibody diluted at 1:100



### Immunofluorescence

**Image 2.** ICC/IF Image Immunofluorescence analysis of paraformaldehyde-fixed HeLa, using Cytochrome P450 4A11, antibody at 1:200 dilution.



### Immunohistochemistry

**Image 3.** IHC-P Image Immunohistochemical analysis of paraffin-embedded human mixed ovarian cancer, using CYP4A11, antibody at 1:100 dilution.