

Datasheet for ABIN2855648

**anti-GK2 antibody**

3 Images

[Go to Product page](#)

## Overview

Quantity:	100 µL
Target:	GK2
Reactivity:	Human
Host:	Rabbit
Clonality:	Polyclonal
Conjugate:	This GK2 antibody is un-conjugated
Application:	Western Blotting (WB), Immunofluorescence (IF), Immunohistochemistry (Paraffin-embedded Sections) (IHC (p)), Immunocytochemistry (ICC)

## Product Details

Immunogen:	Recombinant protein encompassing a sequence within the center region of human Glycerol kinase 2. The exact sequence is proprietary.
Isotype:	IgG
Cross-Reactivity:	Human
Characteristics:	Rabbit Polyclonal antibody to Glycerol kinase 2 (glycerol kinase 2) Glycerol kinase 2 antibody [N1C1]
Purification:	Purified by antigen-affinity chromatography.

## Target Details

Target:	GK2
Alternative Name:	glycerol kinase 2 ( <a href="#">GK2 Products</a> )

## Target Details

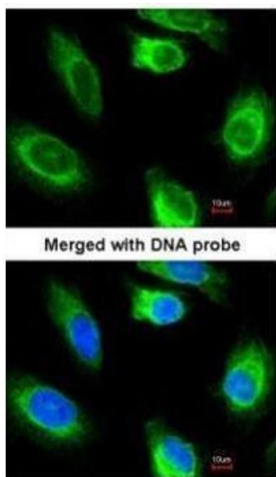
Background:	Key enzyme in the regulation of glycerol uptake and metabolism.  Cellular Localization: Mitochondrion outer membrane, Peripheral membrane protein, Cytoplasmic side (By similarity) , Cytoplasm (By similarity)
Molecular Weight:	61 kDa
Gene ID:	2712
UniProt:	<a href="#">Q14410</a>

## Application Details

Application Notes:	WB: 1:500-1:3000. ICC/IF: 1:100-1:1000. IHC-P: 1:100-1:1000. Optimal dilutions/concentrations should be determined by the researcher. Not tested in other applications.
Comment:	Positive Control: HepG2
Restrictions:	For Research Use only

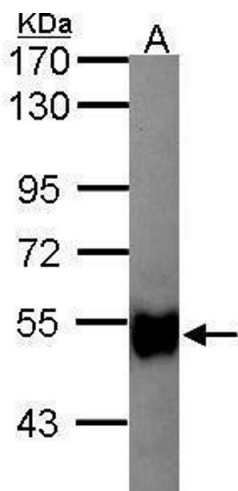
## Handling

Format:	Liquid
Concentration:	0.41 mg/mL
Buffer:	0.1M Tris-Glycine ( pH 7), 10 % Glycerol, 0.01 % Thimerosal
Preservative:	Thimerosal (Merthiolate)
Precaution of Use:	This product contains Thimerosal (Merthiolate): a POISONOUS AND HAZARDOUS SUBSTANCE which should be handled by trained staff only.
Storage:	4 °C, -20 °C
Storage Comment:	Store as concentrated solution. Centrifuge briefly prior to opening vial. For short-term storage (1-2 weeks), store at 4°C. For long-term storage, aliquot and store at -20°C or below. Avoid multiple freeze-thaw cycles.



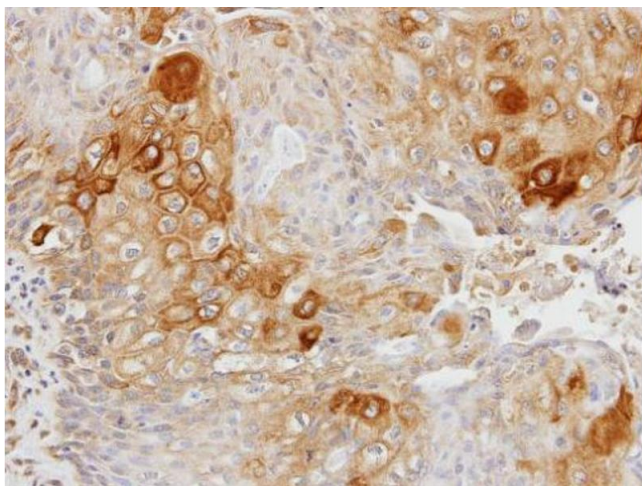
**Immunofluorescence**

**Image 1.** ICC/IF Image Immunofluorescence analysis of paraformaldehyde-fixed HeLa, using glycerol kinase 2, antibody at 1:200 dilution.



**Western Blotting**

**Image 2.** WB Image Sample (30 ug of whole cell lysate) A: Hep G2 , 7.5% SDS PAGE glycerol kinase 2 antibody antibody diluted at 1:1000



**Immunohistochemistry**

**Image 3.** IHC-P Image Immunohistochemical analysis of paraffin-embedded OVCA xenograft, using Glycerol kinase 2, antibody at 1:100 dilution.