

Datasheet for ABIN2855650

anti-PSKH1 antibody**3** Images[Go to Product page](#)

Overview

Quantity:	100 µL
Target:	PSKH1
Reactivity:	Human
Host:	Rabbit
Clonality:	Polyclonal
Conjugate:	This PSKH1 antibody is un-conjugated
Application:	Western Blotting (WB), Immunofluorescence (IF), Immunohistochemistry (Paraffin-embedded Sections) (IHC (p)), Immunocytochemistry (ICC)

Product Details

Immunogen:	Recombinant protein encompassing a sequence within the center region of human PSKH1. The exact sequence is proprietary.
Isotype:	IgG
Cross-Reactivity:	Human
Characteristics:	Rabbit Polyclonal antibody to PSKH1 (protein serine kinase H1) PSKH1 antibody
Purification:	Purified by antigen-affinity chromatography.

Target Details

Target:	PSKH1
Alternative Name:	protein serine kinase H1 (PSKH1 Products)

Target Details

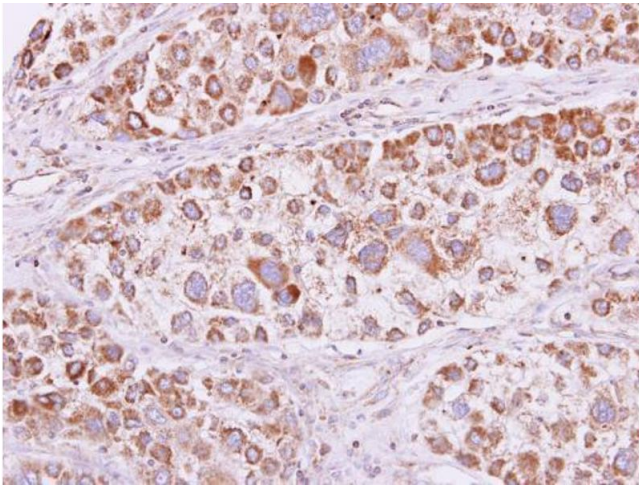
Background:	May be a SFC-associated serine kinase (splicing factor compartment-associated serine kinase) with a role in intranuclear SR protein (non-snRNP splicing factors containing a serine/arginine-rich domain) trafficking and pre-mRNA processing. Cellular Localization: Golgi apparatus , Centrosome , Nucleus speckle , Endoplasmic reticulum membrane, Lipid-anchor , Cell membrane, Lipid-anchor , Cytoplasm
Molecular Weight:	48 kDa
Gene ID:	5681
UniProt:	P11801

Application Details

Application Notes:	WB: 1:500-1:3000. ICC/IF: 1:100-1:1000. IHC-P: 1:100-1:1000. Optimal dilutions/concentrations should be determined by the researcher. Not tested in other applications.
Comment:	Positive Control: HeLaS3 , HepG2
Restrictions:	For Research Use only

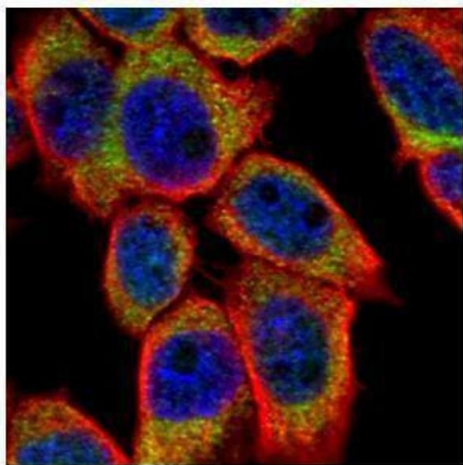
Handling

Format:	Liquid
Concentration:	1 mg/mL
Buffer:	0.1M Tris-Glycine (pH 7), 10 % Glycerol, 0.01 % Thimerosal
Preservative:	Thimerosal (Merthiolate)
Precaution of Use:	This product contains Thimerosal (Merthiolate): a POISONOUS AND HAZARDOUS SUBSTANCE which should be handled by trained staff only.
Storage:	4 °C,-20 °C
Storage Comment:	Store as concentrated solution. Centrifuge briefly prior to opening vial. For short-term storage (1-2 weeks), store at 4°C. For long-term storage, aliquot and store at -20°C or below. Avoid multiple freeze-thaw cycles.



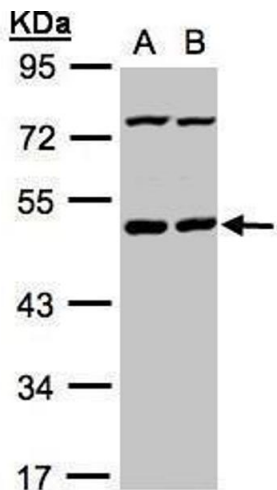
Immunohistochemistry

Image 1. IHC-P Image PSKH1 antibody detects PSKH1 protein at cytoplasm and membrane on human liver carcinoma by immunohistochemical analysis. Sample: Paraffin-embedded liver carcinoma. PSKH1 antibody , dilution: 1:500.



Immunofluorescence

Image 2. ICC/IF Image Confocal immunofluorescence analysis (Olympus FV10i) of paraformaldehyde-fixed A431, using PSKH1, antibody (Green) at 1:500 dilution. Alpha-tubulin filaments were labeled with (Red) at 1:500.



Western Blotting

Image 3. WB Image Sample(30 ug whole cell lysate) A:HeLa S3, B:Hep G2 , 10% SDS PAGE antibody diluted at 1:1000