

Datasheet for ABIN2855653
anti-Kallikrein 7 antibody[Go to Product page](#)

2 Images

1 Publication

Overview

Quantity:	100 µL
Target:	Kallikrein 7 (KLK7)
Reactivity:	Human
Host:	Rabbit
Clonality:	Polyclonal
Conjugate:	This Kallikrein 7 antibody is un-conjugated
Application:	Western Blotting (WB), Immunohistochemistry (Paraffin-embedded Sections) (IHC (p))

Product Details

Immunogen:	Recombinant protein encompassing a sequence within the center region of human Kallikrein 7. The exact sequence is proprietary.
Isotype:	IgG
Cross-Reactivity:	Human, Mouse
Characteristics:	Rabbit Polyclonal antibody to KLK7 (kallikrein-related peptidase 7) KLK7 antibody
Purification:	Purified by antigen-affinity chromatography.

Target Details

Target:	Kallikrein 7 (KLK7)
Alternative Name:	kallikrein related peptidase 7 (KLK7 Products)

Target Details

Background:	<p>Kallikreins are a subgroup of serine proteases having diverse physiological functions. Growing evidence suggests that many kallikreins are implicated in carcinogenesis and some have potential as novel cancer and other disease biomarkers. This gene is one of the fifteen kallikrein subfamily members located in a cluster on chromosome 19. Its encoded enzyme is thought to be involved in the proteolysis of intercellular cohesive structures preceding desquamation, which is the shedding of the outermost layer of the epidermis. Alternative splicing of this gene results in two transcript variants encoding the same protein.</p> <p>Cellular Localization: Secreted</p>
Molecular Weight:	28 kDa
Gene ID:	5650
UniProt:	P49862
Pathways:	Complement System

Application Details

Application Notes:	WB: 1:1000-1:10000. IHC-P: 1:100-1:1000. Optimal dilutions/concentrations should be determined by the researcher. Not tested in other applications.
Comment:	Positive Control: Kallikrein 7-transfected 293T
Restrictions:	For Research Use only

Handling

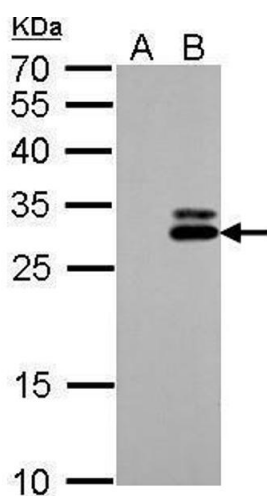
Format:	Liquid
Concentration:	0.69 mg/mL
Buffer:	1XPBS (pH 7), 20 % Glycerol, 0.025 % ProClin 300
Preservative:	ProClin
Precaution of Use:	This product contains ProClin: a POISONOUS AND HAZARDOUS SUBSTANCE which should be handled by trained staff only.
Storage:	4 °C, -20 °C
Storage Comment:	Store as concentrated solution. Centrifuge briefly prior to opening vial. For short-term storage (1-2 weeks), store at 4°C. For long-term storage, aliquot and store at -20°C or below. Avoid multiple freeze-thaw cycles.

Publications

Product cited in: Glaeser, Urban, Fenech, Voloshanenko, Kranz, Lari, Christianson, Boutros: "ERAD-dependent control of the Wnt secretory factor Evi." in: **The EMBO journal**, Vol. 37, Issue 4, (2018) ([PubMed](#)).

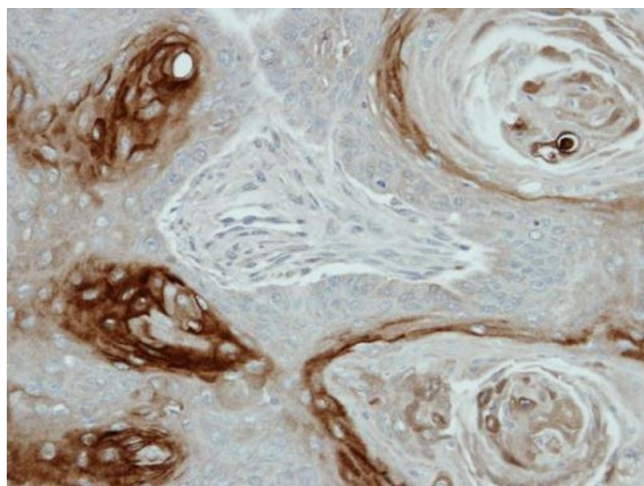
Jain, Noordam, Hoshi, Vallania, Conrad: "Validating single-cell genomics for the study of renal development." in: **Kidney international**, Vol. 86, Issue 5, pp. 1049-55, (2015) ([PubMed](#)).

Images



Western Blotting

Image 1. WB Image KLK7 antibody detects KLK7 protein by Western blot analysis. A. 30 µg 293T whole cell lysate/extract B. 30 µg whole cell lysate/extract of human KLK7-transfected 293T cells 12 % SDS-PAGE KLK7 antibody, dilution: 1:5000



Immunohistochemistry

Image 2. IHC-P Image Immunohistochemical analysis of paraffin-embedded Cal27 xenograft, using KLK7, antibody at 1:100 dilution.