



[Go to Product page](#)

Datasheet for ABIN2855655  
**anti-Desmin antibody**

8 Images

### Overview

Quantity:	100 µL
Target:	Desmin (DES)
Reactivity:	Human
Host:	Rabbit
Clonality:	Polyclonal
Conjugate:	This Desmin antibody is un-conjugated
Application:	Western Blotting (WB), Immunohistochemistry (Paraffin-embedded Sections) (IHC (p)), Immunofluorescence (IF), Flow Cytometry (FACS), Immunohistochemistry (Frozen Sections) (IHC (fro)), Immunocytochemistry (ICC)

### Product Details

Immunogen:	Recombinant protein encompassing a sequence within the center region of human Desmin. The exact sequence is proprietary.
Isotype:	IgG
Cross-Reactivity:	Cat, Chicken, Dog, Human, Mouse, Pig, Rat
Characteristics:	Rabbit Polyclonal antibody to Desmin (desmin) Desmin antibody
Purification:	Purified by antigen-affinity chromatography.

### Target Details

Target:	Desmin (DES)
---------	--------------

## Target Details

---

Alternative Name:	desmin ( <a href="#">DES Products</a> )
Background:	<p>This gene encodes a muscle-specific class III intermediate filament. Homopolymers of this protein form a stable intracytoplasmic filamentous network connecting myofibrils to each other and to the plasma membrane. Mutations in this gene are associated with desmin-related myopathy, a familial cardiac and skeletal myopathy (CSM), and with distal myopathies.</p> <p>Cellular Localization: Cytoplasm</p>
Molecular Weight:	54 kDa
Gene ID:	1674
UniProt:	<a href="#">P17661</a>

## Application Details

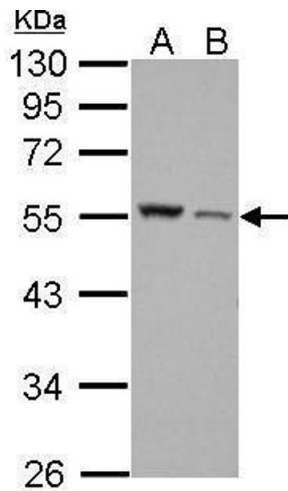
---

Application Notes:	WB: 1:500-1:10000. IHC-P: 1:100-1:1000. Optimal dilutions/concentrations should be determined by the researcher. Not tested in other applications.
Comment:	Positive Control: A549 , HCT116 , 50 µg mouse muscle , Rat2 Validation: Orthogonal
Restrictions:	For Research Use only

## Handling

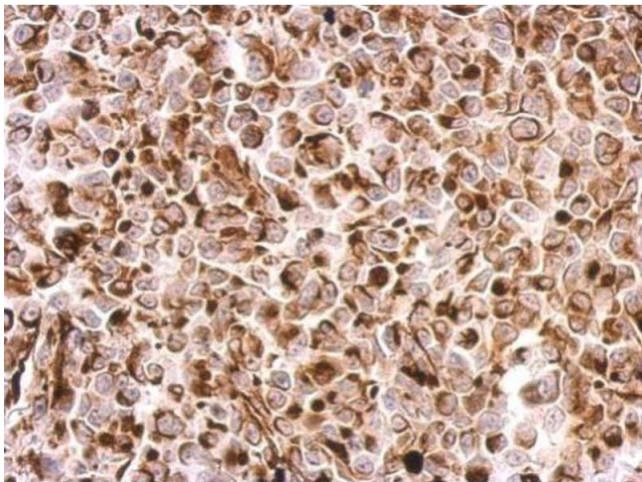
---

Format:	Liquid
Concentration:	0.62 mg/mL
Buffer:	1XPBS, 1 % BSA, 20 % Glycerol ( pH 7), 0.01 % Thimerosal
Preservative:	Thimerosal (Merthiolate)
Precaution of Use:	This product contains Thimerosal (Merthiolate): a POISONOUS AND HAZARDOUS SUBSTANCE which should be handled by trained staff only.
Storage:	4 °C,-20 °C
Storage Comment:	Store as concentrated solution. Centrifuge briefly prior to opening vial. For short-term storage (1-2 weeks), store at 4°C. For long-term storage, aliquot and store at -20°C or below. Avoid multiple freeze-thaw cycles.



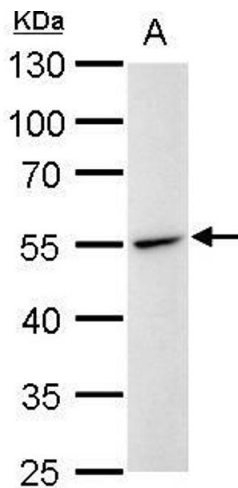
#### Western Blotting

**Image 1.** WB Image Desmin antibody detects DES protein by Western blot analysis. A. 30 µg A549 whole cell lysate/extract | B. 30 µg HCT116 whole cell lysate/extract B. 30 µg HCT116 whole cell lysate/extract 10 % SDS-PAGE Desmin antibody , dilution: 1:3000



#### Immunohistochemistry

**Image 2.** IHC-P Image Desmin antibody detects DES protein at cytosol on H1299 xenograft by immunohistochemical analysis. Sample: Paraffin-embedded H1299 xenograft. Desmin antibody , dilution: 1:500.



#### Western Blotting

**Image 3.** WB Image Desmin antibody detects Desmin protein by western blot analysis. A. 30 µg Rat2 whole cell lysate/extract 10 % SDS-PAGE Desmin antibody , dilution: 1:1000

Please check the [product details page](#) for more images. Overall 8 images are available for ABIN2855655.