

Datasheet for ABIN2855660  
**anti-NAB2 antibody**



[Go to Product page](#)

4 Images

Overview

Quantity:	100 µL
Target:	NAB2
Reactivity:	Human
Host:	Rabbit
Clonality:	Polyclonal
Conjugate:	This NAB2 antibody is un-conjugated
Application:	Western Blotting (WB), Immunohistochemistry (Paraffin-embedded Sections) (IHC (p)), Immunoprecipitation (IP), Immunocytochemistry (ICC), Immunofluorescence (IF)

Product Details

Immunogen:	Recombinant protein encompassing a sequence within the center region of human NAB2. The exact sequence is proprietary.
Isotype:	IgG
Cross-Reactivity:	Human, Mouse
Characteristics:	Rabbit Polyclonal antibody to NAB2 (NGFI-A binding protein 2 (EGR1 binding protein 2)) NAB2 antibody
Purification:	Purified by antigen-affinity chromatography.

Target Details

Target:	NAB2
Alternative Name:	NGFI-A binding protein 2 ( <a href="#">NAB2 Products</a> )

## Target Details

---

**Background:** This gene encodes a member of the family of NGFI-A binding (NAB) proteins, which function in the nucleus to repress transcription induced by some members of the EGR (early growth response) family of transactivators. NAB proteins can homo- or hetero-multimerize with other EGR or NAB proteins through a conserved N-terminal domain, and repress transcription through two partially redundant C-terminal domains. Transcriptional repression by the encoded protein is mediated in part by interactions with the nucleosome remodeling and deacetylase (NuRD) complex. Alternatively spliced transcript variants have been described, but their biological validity has not been determined.

Cellular Localization: Nucleus (By similarity)

---

**Molecular Weight:** 57 kDa

---

**Gene ID:** 4665

---

**UniProt:** [Q15742](#)

## Application Details

---

**Application Notes:** WB: 1:500-1:3000. ICC/IF: 1:100-1:1000. IHC-P: 1:100-1:1000. IP: 1:100-1:500. Optimal dilutions/concentrations should be determined by the researcher. Not tested in other applications.

---

**Comment:** Positive Control: A431

---

**Restrictions:** For Research Use only

## Handling

---

**Format:** Liquid

---

**Concentration:** 1 mg/mL

---

**Buffer:** 1XPBS ( pH 7), 1 % BSA, 20 % Glycerol, 0.01 % Thimerosal

---

**Preservative:** Thimerosal (Merthiolate)

---

**Precaution of Use:** This product contains Thimerosal (Merthiolate): a POISONOUS AND HAZARDOUS SUBSTANCE which should be handled by trained staff only.

---

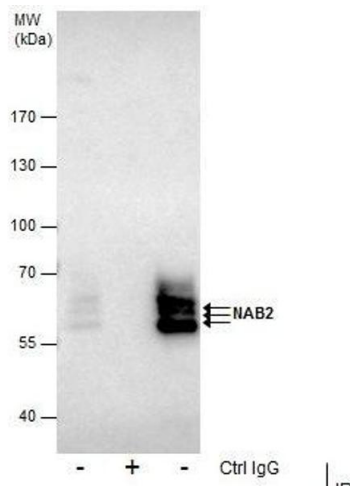
**Storage:** 4 °C,-20 °C

---

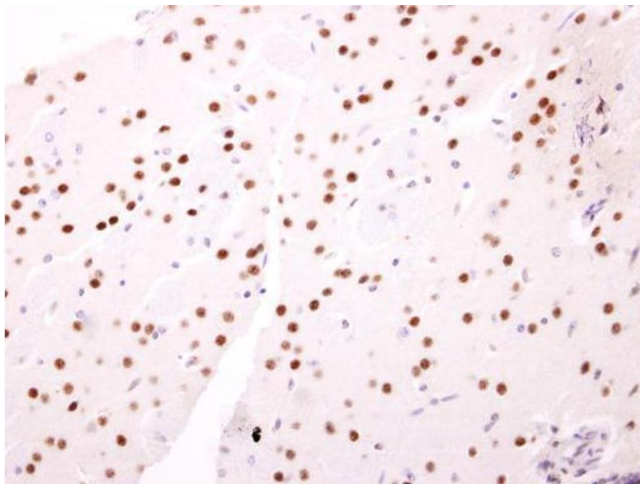
**Storage Comment:** Store as concentrated solution. Centrifuge briefly prior to opening vial. For short-term storage (1-2 weeks), store at 4°C. For long-term storage, aliquot and store at -20°C or below. Avoid

multiple freeze-thaw cycles.

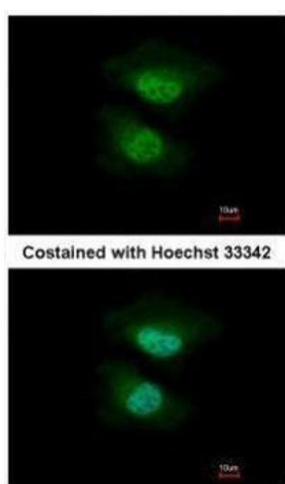
## Images

**Immunoprecipitation**

**Image 1.** IP Image Immunoprecipitation of NAB2 protein from Jurkat whole cell extracts using 5  $\mu$ g of NAB2 antibody, Western blot analysis was performed using NAB2 antibody, EasyBlot anti-Rabbit IgG was used as a secondary reagent.

**Immunohistochemistry**

**Image 2.** IHC-P Image NAB2 antibody detects NAB2 protein at nucleus on mouse fore brain by immunohistochemical analysis. Sample: Paraffin-embedded mouse fore brain. NAB2 antibody, dilution: 1:500.

**Immunofluorescence**

**Image 3.** ICC/IF Image Immunofluorescence analysis of paraformaldehyde-fixed HeLa, using NAB2, antibody at 1:500 dilution.

Please check the [product details page](#) for more images. Overall 4 images are available for ABIN2855660.