

Datasheet for ABIN2855665

anti-PAPSS1 antibody

4 Images

[Go to Product page](#)

Overview

Quantity:	100 µL
Target:	PAPSS1
Reactivity:	Human
Host:	Rabbit
Clonality:	Polyclonal
Conjugate:	This PAPSS1 antibody is un-conjugated
Application:	Western Blotting (WB), Immunofluorescence (IF), Immunohistochemistry (Paraffin-embedded Sections) (IHC (p)), Immunocytochemistry (ICC)

Product Details

Immunogen:	Recombinant protein encompassing a sequence within the center region of human PAPSS1. The exact sequence is proprietary.
Isotype:	IgG
Cross-Reactivity:	Human, Mouse
Characteristics:	Rabbit Polyclonal antibody to PAPSS1 (3'-phosphoadenosine 5'-phosphosulfate synthase 1) PAPSS1 antibody [C1C3]
Purification:	Purified by antigen-affinity chromatography.

Target Details

Target:	PAPSS1
Alternative Name:	3'-phosphoadenosine 5'-phosphosulfate synthase 1 (PAPSS1 Products)

Target Details

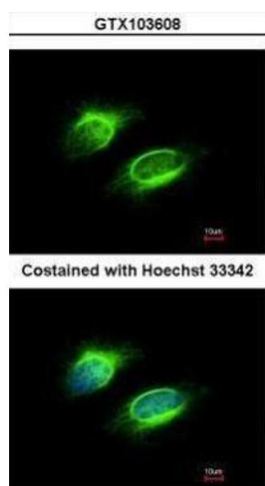
Background:	Three-prime-phosphoadenosine 5-prime-phosphosulfate (PAPS) is the sulfate donor cosubstrate for all sulfotransferase (SULT) enzymes (Xu et al., 2000 [PubMed 10679223]). SULTs catalyze the sulfate conjugation of many endogenous and exogenous compounds, including drugs and other xenobiotics. In humans, PAPS is synthesized from adenosine 5-prime triphosphate (ATP) and inorganic sulfate by 2 isoforms, PAPSS1 and PAPSS2 (MIM 603005).[supplied by OMIM]
Molecular Weight:	71 kDa
Gene ID:	9061
UniProt:	O43252
Pathways:	Glycosaminoglycan Metabolic Process , Ribonucleoside Biosynthetic Process

Application Details

Application Notes:	WB: 1:500-1:3000. ICC/IF: 1:100-1:1000. IHC-P: 1:100-1:1000. Optimal dilutions/concentrations should be determined by the researcher. Not tested in other applications.
Comment:	Positive Control: Mouse brain , HepG2
Restrictions:	For Research Use only

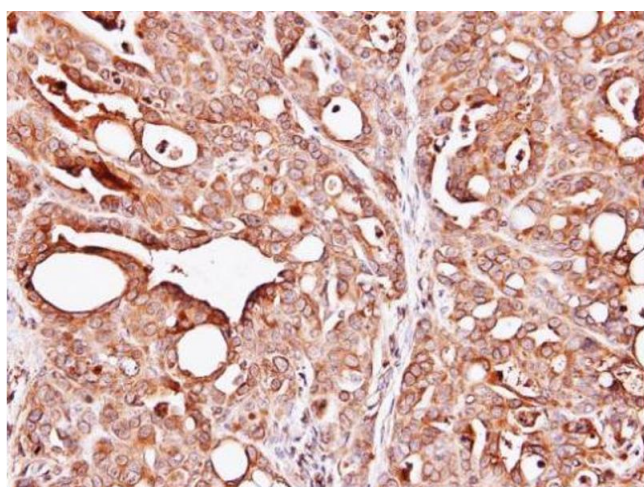
Handling

Format:	Liquid
Concentration:	0.94 mg/mL
Buffer:	0.1M Tris-Glycine (pH 7), 10 % Glycerol, 0.01 % Thimerosal
Preservative:	Thimerosal (Merthiolate)
Precaution of Use:	This product contains Thimerosal (Merthiolate): a POISONOUS AND HAZARDOUS SUBSTANCE which should be handled by trained staff only.
Storage:	4 °C,-20 °C
Storage Comment:	Store as concentrated solution. Centrifuge briefly prior to opening vial. For short-term storage (1-2 weeks), store at 4°C. For long-term storage, aliquot and store at -20°C or below. Avoid multiple freeze-thaw cycles.



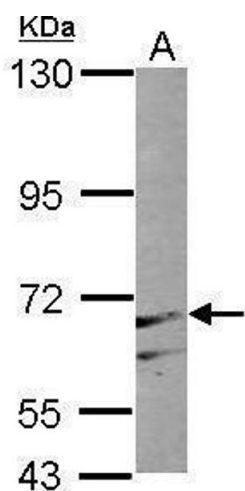
Immunofluorescence

Image 1. ICC/IF Image Immunofluorescence analysis of methanol-fixed HeLa, using PAPSS1, antibody at 1:200 dilution.



Immunohistochemistry

Image 2. IHC-P Image Immunohistochemical analysis of paraffin-embedded NCI-N87 xenograft, using PAPSS1, antibody at 1:100 dilution.



Western Blotting

Image 3. WB Image Sample (50 ug of whole cell lysate) A: Mouse brain 7.5% SDS PAGE antibody diluted at 1:500

Please check the [product details page](#) for more images. Overall 4 images are available for ABIN2855665.