

Datasheet for ABIN2855667
anti-PSMA2 antibody (Center)

3 Images

[Go to Product page](#)

Overview

Quantity:	100 µL
Target:	PSMA2
Binding Specificity:	Center
Reactivity:	Human
Host:	Rabbit
Clonality:	Polyclonal
Conjugate:	This PSMA2 antibody is un-conjugated
Application:	Western Blotting (WB), Immunofluorescence (IF), Immunohistochemistry (Paraffin-embedded Sections) (IHC (p)), Immunocytochemistry (ICC)

Product Details

Immunogen:	Recombinant protein encompassing a sequence within the center region of human Proteasome 20S alpha 2. The exact sequence is proprietary.
Isotype:	IgG
Cross-Reactivity:	Mouse (Murine), Rat (Rattus), Rhesus Monkey, Cow (Bovine)
Cross-Reactivity (Details):	Mouse (100 %), Rat (100 %), Rhesus Monkey (100 %), Bovine (100 %)
Characteristics:	Rabbit Polyclonal antibody to Proteasome 20S alpha 2 (proteasome (prosome, macropain) subunit, alpha type, 2) Proteasome 20S alpha 2 antibody [N1C3]
Purification:	Purified by antigen-affinity chromatography.

Target Details

Target:	PSMA2
Alternative Name:	Proteasome 20S alpha 2 (PSMA2 Products)
Background:	<p>The proteasome is a multicatalytic proteinase complex with a highly ordered ring-shaped 20S core structure. The core structure is composed of 4 rings of 28 non-identical subunits, 2 rings are composed of 7 alpha subunits and 2 rings are composed of 7 beta subunits. Proteasomes are distributed throughout eukaryotic cells at a high concentration and cleave peptides in an ATP/ubiquitin-dependent process in a non-lysosomal pathway. An essential function of a modified proteasome, the immunoproteasome, is the processing of class I MHC peptides. This gene encodes a member of the peptidase T1A family, that is a 20S core alpha subunit.</p> <p>Cellular Localization: Cytoplasm , Nucleus</p>
Molecular Weight:	26 kDa
Gene ID:	5683
Pathways:	Mitotic G1-G1/S Phases , DNA Replication , Synthesis of DNA

Application Details

Application Notes:	<p>Suggested dilution Reference ICC/IF 1:100-1:1000* IHC (Formalin-fixed paraffin-embedded sections) 1:100-1:1000* Western blot 1:500-1:3000* Not tested in other applications. *Optimal dilutions/concentrations should be determined by the researcher.Suggested dilutionReferenceICC/IF1:100-1:1000* IHC (Formalin-fixed paraffin-embedded sections)1:100-1:1000* Western blot1:500-1:3000*</p>
Comment:	Positive Control: 293T , A431 , H1299 , HeLaS3 , HepG2 , Molt-4 , Raji
Restrictions:	For Research Use only

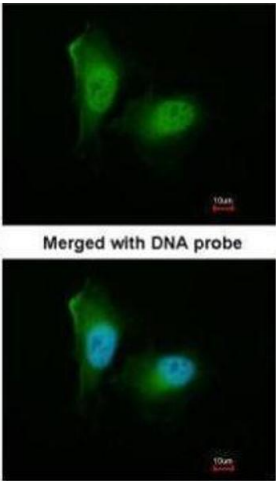
Handling

Format:	Liquid
Concentration:	1 mg/mL
Buffer:	0.1M Tris, 0.1M Glycine, 10 % Glycerol (pH 7). 0.01 % Thimerosal was added as a preservative.
Preservative:	Thimerosal (Merthiolate)
Precaution of Use:	This product contains Thimerosal (Merthiolate): a POISONOUS AND HAZARDOUS SUBSTANCE which should be handled by trained staff only.

Handling

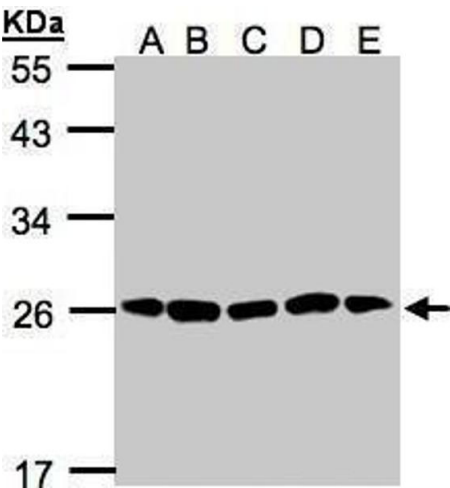
Storage:	-20 °C
Storage Comment:	Keep as concentrated solution. Aliquot and store at -20°C or below. Avoid multiple freeze-thaw cycles.

Images



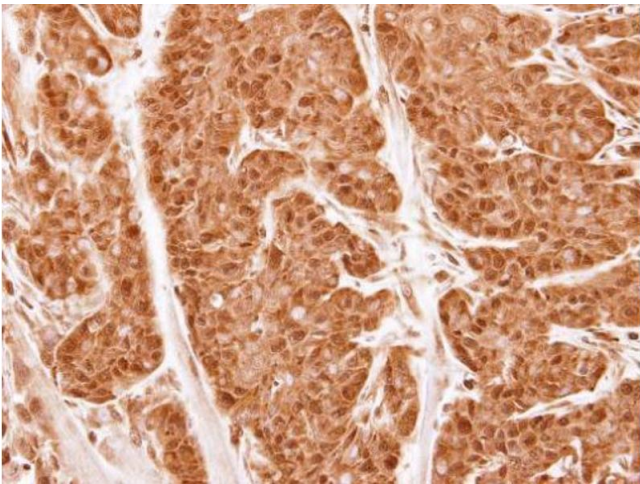
Immunofluorescence

Image 1. ICC/IF Image Immunofluorescence analysis of paraformaldehyde-fixed HeLa, using 20S Proteasome alpha2, antibody at 1:200 dilution.



Western Blotting

Image 2. WB Image Sample(30µg of whole cell lysate) A: H1299 B: HeLa S3 , C: Hep G2 , D: MOLT4 , E: Raji , 12% SDS PAGE antibody diluted at 1:1000



Immunohistochemistry

Image 3. IHC-P Image Immunohistochemical analysis of paraffin-embedded CA922 xenograft, using Proteasome 20S alpha 2, antibody at 1:500 dilution.