

Datasheet for ABIN2855674

anti-PPIE antibody**3** Images[Go to Product page](#)

Overview

Quantity:	100 µL
Target:	PPIE
Reactivity:	Human
Host:	Rabbit
Clonality:	Polyclonal
Conjugate:	This PPIE antibody is un-conjugated
Application:	Western Blotting (WB), Immunohistochemistry (Paraffin-embedded Sections) (IHC (p))

Product Details

Immunogen:	Recombinant protein encompassing a sequence within the center region of human Cyclophilin E. The exact sequence is proprietary.
Isotype:	IgG
Cross-Reactivity:	Human, Mouse
Characteristics:	Rabbit Polyclonal antibody to Cyclophilin E (peptidylprolyl isomerase E (cyclophilin E)) Cyclophilin E antibody
Purification:	Purified by antigen-affinity chromatography.

Target Details

Target:	PPIE
Alternative Name:	peptidylprolyl isomerase E (PPIE Products)

Target Details

Background: The protein encoded by this gene is a member of the peptidyl-prolyl cis-trans isomerase (PPIase) family. PPIases catalyze the cis-trans isomerization of proline imidic peptide bonds in oligopeptides and accelerate the folding of proteins. This protein contains a highly conserved cyclophilin (CYP) domain as well as an RNA-binding domain. It was shown to possess PPIase and protein folding activities and also exhibit RNA-binding activity. Three alternatively spliced transcript variants encoding distinct isoforms have been observed.

Cellular Localization: Nucleus

Molecular Weight: 33 kDa

Gene ID: 10450

UniProt: [Q9UNP9](#)

Application Details

Application Notes: WB: 1:500-1:3000. IHC-P: 1:100-1:1000. Optimal dilutions/concentrations should be determined by the researcher. Not tested in other applications.

Comment: Positive Control: H1299

Restrictions: For Research Use only

Handling

Format: Liquid

Concentration: 0.89 mg/mL

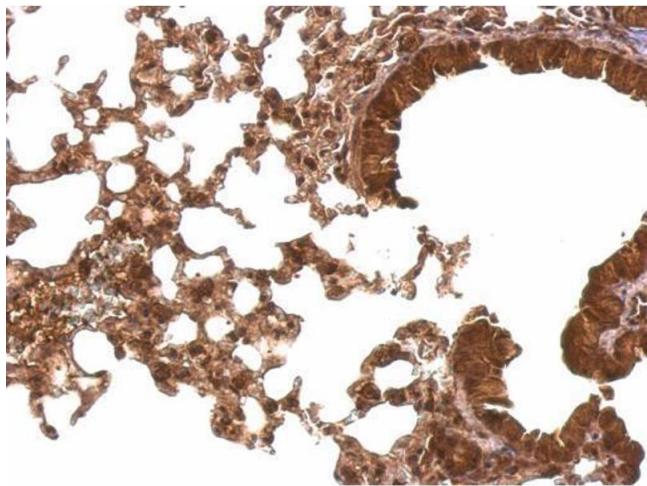
Buffer: 0.1M Tris-Glycine (pH 7), 10 % Glycerol, 0.01 % Thimerosal

Preservative: Thimerosal (Merthiolate)

Precaution of Use: This product contains Thimerosal (Merthiolate): a POISONOUS AND HAZARDOUS SUBSTANCE which should be handled by trained staff only.

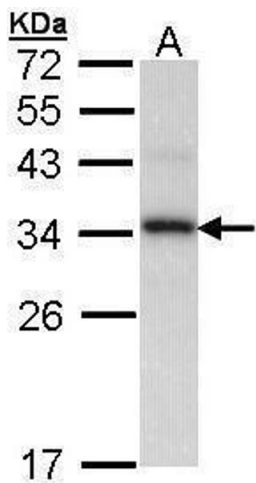
Storage: 4 °C,-20 °C

Storage Comment: Store as concentrated solution. Centrifuge briefly prior to opening vial. For short-term storage (1-2 weeks), store at 4°C. For long-term storage, aliquot and store at -20°C or below. Avoid multiple freeze-thaw cycles.



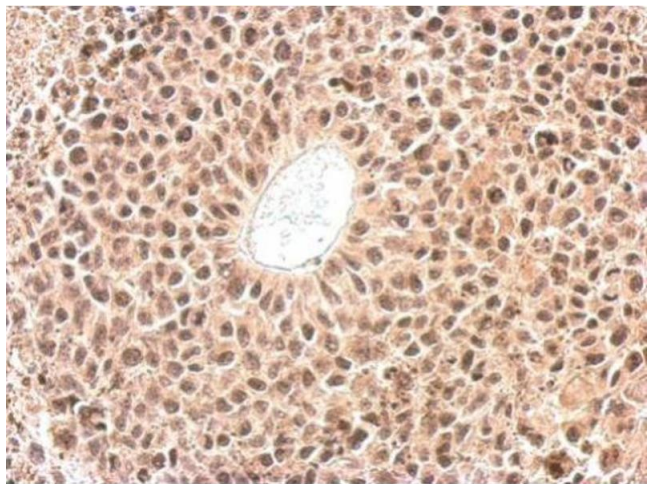
Immunohistochemistry

Image 1. IHC-P Image Cyclophilin E antibody detects Cyclophilin E protein at nucleus and cytosol on mouse lung by immunohistochemical analysis. Sample: Paraffin-embedded mouse lung. Cyclophilin E antibody , dilution: 1:500.



Western Blotting

Image 2. WB Image Sample (30 ug of whole cell lysate) A: H1299 12% SDS PAGE antibody diluted at 1:1000



Immunohistochemistry

Image 3. IHC-P Image Cyclophilin E antibody detects PPIE protein at nucleus on HeLa xenograft by immunohistochemical analysis. Sample: Paraffin-embedded HeLa xenograft. Cyclophilin E antibody , dilution: 1:500.