

Datasheet for ABIN2855676
anti-CYR61 antibody (Center)

2 Images

[Go to Product page](#)

Overview

Quantity:	100 µL
Target:	CYR61
Binding Specificity:	Center
Reactivity:	Human, Rat
Host:	Rabbit
Clonality:	Polyclonal
Conjugate:	This CYR61 antibody is un-conjugated
Application:	Western Blotting (WB), Immunocytochemistry (ICC), Immunofluorescence (IF), Immunohistochemistry (Paraffin-embedded Sections) (IHC (p))

Product Details

Immunogen:	Recombinant protein encompassing a sequence within the center region of human CYR61. The exact sequence is proprietary.
Isotype:	IgG
Cross-Reactivity:	Chimpanzee
Cross-Reactivity (Details):	Chimpanzee (100 %)
Characteristics:	Rabbit polyclonal antibody to CYR61 (cysteine-rich, angiogenic inducer, 61) CYR61 antibody [N1C3]
Purification:	Purified by antigen-affinity chromatography.

Target Details

Target:	CYR61
Alternative Name:	CYR61 (CYR61 Products)
Background:	<p>CYR61 is a secreted, cysteine-rich, heparin-binding protein encoded by a growth factor-inducible immediate-early gene. Acting as an extracellular, matrix-associated signaling molecule, CYR61 promotes the adhesion of endothelial cells through interaction with integrin and augments growth factor-induced DNA synthesis in the same cell type.[supplied by OMIM]</p> <p>Cellular Localization: Secreted</p>
Molecular Weight:	42 kDa
Gene ID:	3491
Pathways:	Positive Regulation of Endopeptidase Activity , Growth Factor Binding

Application Details

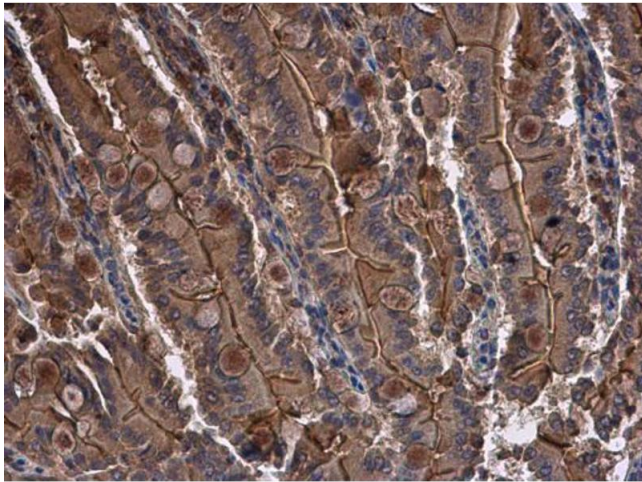
Application Notes:	<p>Suggested dilution Reference ICC/IF 1:100-1:1000* IHC (Formalin-fixed paraffin-embedded sections) 1:100-1:1000* Western blot 1:500-1:3000* Not tested in other applications. *Optimal dilutions/concentrations should be determined by the researcher.Suggested dilutionReference ICC/IF1:100-1:1000* IHC (Formalin-fixed paraffin-embedded sections)1:100-1:1000* Western blot1:500-1:3000*</p>
Comment:	Positive Control: HeLa (1X Brefeldin A for 24hr)
Restrictions:	For Research Use only

Handling

Format:	Liquid
Concentration:	0.26 mg/mL
Buffer:	0.1M Tris, 0.1M Glycine, 20 % Glycerol (pH 7). 0.01 % Thimerosal was added as a preservative.
Preservative:	Thimerosal (Merthiolate)
Precaution of Use:	This product contains Thimerosal (Merthiolate): a POISONOUS AND HAZARDOUS SUBSTANCE which should be handled by trained staff only.
Storage:	-20 °C
Storage Comment:	Keep as concentrated solution. Aliquot and store at -20°C or below. Avoid multiple freeze-thaw

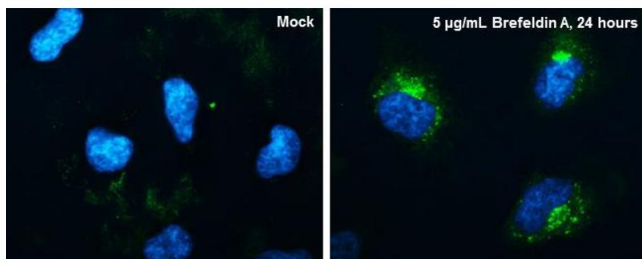
cycles.

Images



Immunohistochemistry

Image 1. IHC-P Image CYR61 antibody [N1C3] detects CYR61 protein at cytoplasm in rat intestine by immunohistochemical analysis. Sample: Paraffin-embedded rat intestine. CYR61 antibody [N1C3], diluted at 1:500.



Immunofluorescence

Image 2. ICC/IF Image CYR61 antibody [N1C3] detects CYR61 protein at endoplasmic reticulum by immunofluorescent analysis. Sample: HeLa cells were fixed in 4% paraformaldehyde at RT for 15 min. Green: CYR61 protein stained by CYR61 antibody [N1C3], diluted at 1:200. Blue: Hoechst 33342 staining.