

Datasheet for ABIN2855680

**anti-MPI antibody**

3 Images

[Go to Product page](#)

## Overview

Quantity:	100 µL
Target:	MPI
Reactivity:	Human
Host:	Rabbit
Clonality:	Polyclonal
Conjugate:	This MPI antibody is un-conjugated
Application:	Western Blotting (WB), Immunohistochemistry (Paraffin-embedded Sections) (IHC (p))

## Product Details

Immunogen:	Recombinant protein encompassing a sequence within the center region of human MPI. The exact sequence is proprietary.
Isotype:	IgG
Cross-Reactivity:	Human, Rat
Characteristics:	Rabbit Polyclonal antibody to MPI (mannose phosphate isomerase) MPI antibody
Purification:	Purified by antigen-affinity chromatography.
Grade:	KO Validated

## Target Details

Target:	MPI
---------	-----

## Target Details

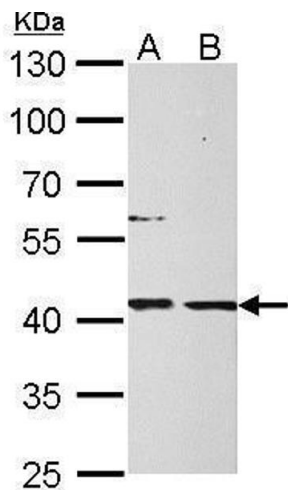
Alternative Name:	mannose phosphate isomerase ( <a href="#">MPI Products</a> )
Background:	Phosphomannose isomerase catalyzes the interconversion of fructose-6-phosphate and mannose-6-phosphate and plays a critical role in maintaining the supply of D-mannose derivatives, which are required for most glycosylation reactions. Mutations in the MPI gene were found in patients with carbohydrate-deficient glycoprotein syndrome, type Ib.  Cellular Localization: Cytoplasm
Molecular Weight:	47 kDa
Gene ID:	4351
UniProt:	<a href="#">P34949</a>

## Application Details

Application Notes:	WB: 1:500-1:3000. IHC-P: 1:100-1:1000. Optimal dilutions/concentrations should be determined by the researcher. Not tested in other applications.
Comment:	Positive Control: 293T , A431 , H1299 , HeLaS3 , HepG2 , Molt-4 , Raji , PC-12 , Rat2 , HeLa Validation: KO/KD
Restrictions:	For Research Use only

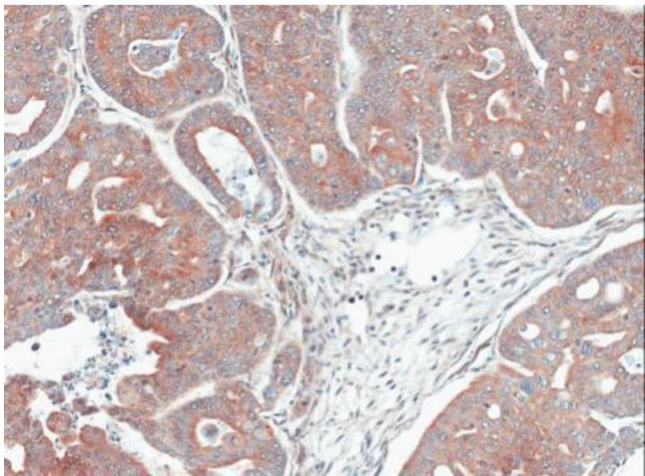
## Handling

Format:	Liquid
Concentration:	1 mg/mL
Buffer:	0.1M Tris-Glycine ( pH 7), 10 % Glycerol, 0.01 % Thimerosal
Preservative:	Thimerosal (Merthiolate)
Precaution of Use:	This product contains Thimerosal (Merthiolate): a POISONOUS AND HAZARDOUS SUBSTANCE which should be handled by trained staff only.
Storage:	4 °C,-20 °C
Storage Comment:	Store as concentrated solution. Centrifuge briefly prior to opening vial. For short-term storage (1-2 weeks), store at 4°C. For long-term storage, aliquot and store at -20°C or below. Avoid multiple freeze-thaw cycles.



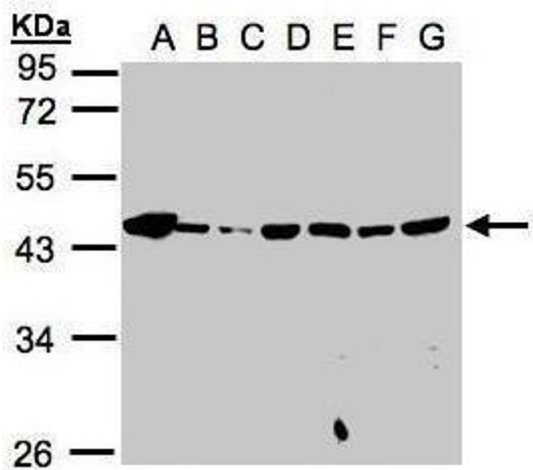
#### Western Blotting

**Image 1.** WB Image MPI antibody detects MPI protein by Western blot analysis. A. 30 µg PC-12 whole cell lysate/extract B. 30 µg Rat2 whole cell lysate/extract 10 % SDS-PAGE MPI antibody , dilution: 1:1000



#### Immunohistochemistry

**Image 2.** IHC-P Image Immunohistochemical analysis of paraffin-embedded Gastric CA N87 xenograft, using MPI, antibody at 1:100 dilution.



#### Western Blotting

**Image 3.** WB Image Sample(30µg whole cell lysate) A: 293T B: A431 , C: H1299 D: HeLa S3 , E: Hep G2 , F: MOLT4 , G: Raji , 10% SDS PAGE antibody diluted at 1:1000