



Datasheet for ABIN2855686
anti-Cullin 3 antibody



[Go to Product page](#)

1 Image

Overview

Quantity:	100 µL
Target:	Cullin 3 (CUL3)
Reactivity:	Human
Host:	Rabbit
Clonality:	Polyclonal
Conjugate:	This Cullin 3 antibody is un-conjugated
Application:	Western Blotting (WB)

Product Details

Immunogen:	Recombinant protein encompassing a sequence within the center region of human Cullin 3. The exact sequence is proprietary.
Isotype:	IgG
Cross-Reactivity:	Human, Mouse
Characteristics:	Rabbit Polyclonal antibody to Cullin 3 (cullin 3) Cullin 3 antibody
Purification:	Purified by antigen-affinity chromatography.

Target Details

Target:	Cullin 3 (CUL3)
Alternative Name:	cullin 3 (CUL3 Products)

Target Details

Background: CUL3 is a component of a ubiquitin E3 ligase that is essential for mitotic division (Sumara et al., 2007 [PubMed 17543862]).[supplied by OMIM]

Cellular Localization: Nucleus , Golgi apparatus

Molecular Weight: 89 kDa

Gene ID: 8452

UniProt: [Q13618](#)

Pathways: [M Phase](#)

Application Details

Application Notes: WB: 1:500-1:3000. Optimal dilutions/concentrations should be determined by the researcher.
Not tested in other applications.

Comment: Positive Control: human CUL3-transfected 293T cells , mouse testis

Restrictions: For Research Use only

Handling

Format: Liquid

Concentration: 1 mg/mL

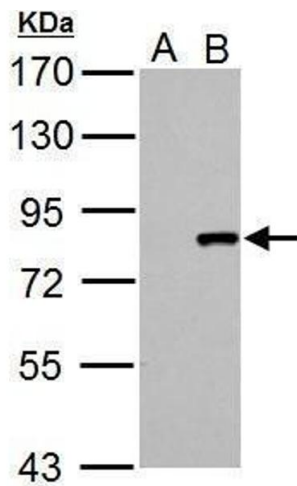
Buffer: 0.1M Tris-Glycine (pH 7), 10 % Glycerol, 0.01 % Thimerosal

Preservative: Thimerosal (Merthiolate)

Precaution of Use: This product contains Thimerosal (Merthiolate): a POISONOUS AND HAZARDOUS SUBSTANCE which should be handled by trained staff only.

Storage: 4 °C,-20 °C

Storage Comment: Store as concentrated solution. Centrifuge briefly prior to opening vial. For short-term storage (1-2 weeks), store at 4°C. For long-term storage, aliquot and store at -20°C or below. Avoid multiple freeze-thaw cycles.



Western Blotting

Image 1. WB Image Cullin 3 antibody detects Cullin 3 protein by Western blot analysis. A. 30 µg 293T whole cell lysate/extract B. 30 µg whole cell lysate/extract of human CUL3-transfected 293T cells 7.5 % SDS-PAGE Cullin 3 antibody , dilution: 1:5000