

Datasheet for ABIN2855687

anti-PLA2G6 antibody[Go to Product page](#)**1** Image

Overview

Quantity:	100 µL
Target:	PLA2G6
Reactivity:	Human
Host:	Rabbit
Clonality:	Polyclonal
Conjugate:	This PLA2G6 antibody is un-conjugated
Application:	Western Blotting (WB)

Product Details

Immunogen:	Recombinant protein encompassing a sequence within the center region of human PLA2G6. The exact sequence is proprietary.
Isotype:	IgG
Cross-Reactivity:	Drosophila melanogaster, Human
Characteristics:	Rabbit Polyclonal antibody to PLA2G6 (phospholipase A2, group VI (cytosolic, calcium-independent)) PLA2G6 antibody [N3C3]
Purification:	Purified by antigen-affinity chromatography.

Target Details

Target:	PLA2G6
Alternative Name:	phospholipase A2 group VI (PLA2G6 Products)

Target Details

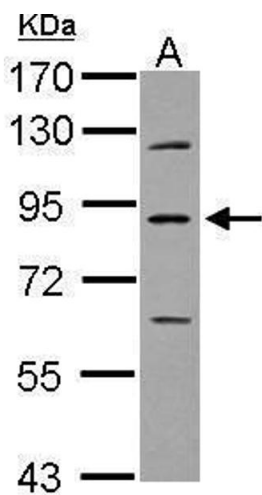
Background:	<p>The protein encoded by this gene is an A2 phospholipase, a class of enzyme that catalyzes the release of fatty acids from phospholipids. The encoded protein may play a role in phospholipid remodelling, arachidonic acid release, leukotriene and prostaglandin synthesis, fas-mediated apoptosis, and transmembrane ion flux in glucose-stimulated B-cells. Several transcript variants encoding multiple isoforms have been described, but the full-length nature of only two of them have been determined to date.</p> <p>Cellular Localization: Isoform LH-iPLA2: Membrane, Peripheral membrane protein , Isoform SH-iPLA2: Cytoplasm</p>
Molecular Weight:	90 kDa
Gene ID:	8398
UniProt:	O60733
Pathways:	Positive Regulation of Peptide Hormone Secretion

Application Details

Application Notes:	WB: 1:500-1:3000. Optimal dilutions/concentrations should be determined by the researcher. Not tested in other applications.
Comment:	Positive Control: U87-MG
Restrictions:	For Research Use only

Handling

Format:	Liquid
Concentration:	0.74 mg/mL
Buffer:	0.1M Tris-Glycine (pH 7), 20 % Glycerol, 0.01 % Thimerosal
Preservative:	Thimerosal (Merthiolate)
Precaution of Use:	This product contains Thimerosal (Merthiolate): a POISONOUS AND HAZARDOUS SUBSTANCE which should be handled by trained staff only.
Storage:	4 °C, -20 °C
Storage Comment:	Store as concentrated solution. Centrifuge briefly prior to opening vial. For short-term storage (1-2 weeks), store at 4°C. For long-term storage, aliquot and store at -20°C or below. Avoid multiple freeze-thaw cycles.



Western Blotting

Image 1. WB Image Sample (30 ug of whole cell lysate) A:
U87-MG 7.5% SDS PAGE antibody diluted at 1:500