

Datasheet for ABIN2855688  
**anti-CYP27A1 antibody (Center)**

## 5 Images

[Go to Product page](#)

## Overview

Quantity:	100 µL
Target:	CYP27A1
Binding Specificity:	Center
Reactivity:	Human, Mouse, Rat
Host:	Rabbit
Clonality:	Polyclonal
Conjugate:	This CYP27A1 antibody is un-conjugated
Application:	Western Blotting (WB), Immunohistochemistry (Paraffin-embedded Sections) (IHC (p))

## Product Details

Immunogen:	Recombinant protein encompassing a sequence within the center region of human CYP27A1. The exact sequence is proprietary.
Isotype:	IgG
Characteristics:	Rabbit Polyclonal antibody to CYP27A1 (cytochrome P450, family 27, subfamily A, polypeptide 1) CYP27A1 antibody
Purification:	Purified by antigen-affinity chromatography.

## Target Details

Target:	CYP27A1
Alternative Name:	CYP27A1 ( <a href="#">CYP27A1 Products</a> )

## Target Details

**Background:** This gene encodes a member of the cytochrome P450 superfamily of enzymes. The cytochrome P450 proteins are monooxygenases which catalyze many reactions involved in drug metabolism and synthesis of cholesterol, steroids and other lipids. This mitochondrial protein oxidizes cholesterol intermediates as part of the bile synthesis pathway. Since the conversion of cholesterol to bile acids is the major route for removing cholesterol from the body, this protein is important for overall cholesterol homeostasis. Mutations in this gene cause cerebrotendinous xanthomatosis, a rare autosomal recessive lipid storage disease.

Cellular Localization: Mitochondrion membrane

**Molecular Weight:** 60 kDa

**Gene ID:** 1593

## Application Details

**Application Notes:** Suggested dilution Reference IHC (Formalin-fixed paraffin-embedded sections) 1:100-1:1000\* Western blot 1:500-1:3000\* Not tested in other applications. \*Optimal dilutions/concentrations should be determined by the researcher. Suggested dilution Reference IHC (Formalin-fixed paraffin-embedded sections) 1:100-1:1000\* Western blot 1:500-1:3000\*

**Comment:** Positive Control: A549 , mouse liver , rat liver

**Restrictions:** For Research Use only

## Handling

**Format:** Liquid

**Concentration:** 1 mg/mL

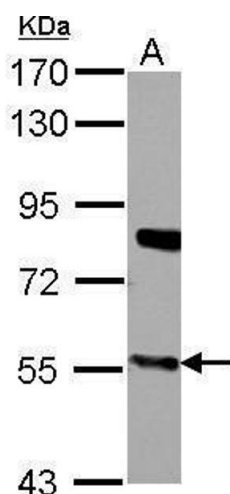
**Buffer:** 1XPBS, 1 % BSA, 20 % Glycerol ( pH 7). 0.01 % Thimerosal was added as a preservative.

**Preservative:** Thimerosal (Merthiolate)

**Precaution of Use:** This product contains Thimerosal (Merthiolate): a POISONOUS AND HAZARDOUS SUBSTANCE which should be handled by trained staff only.

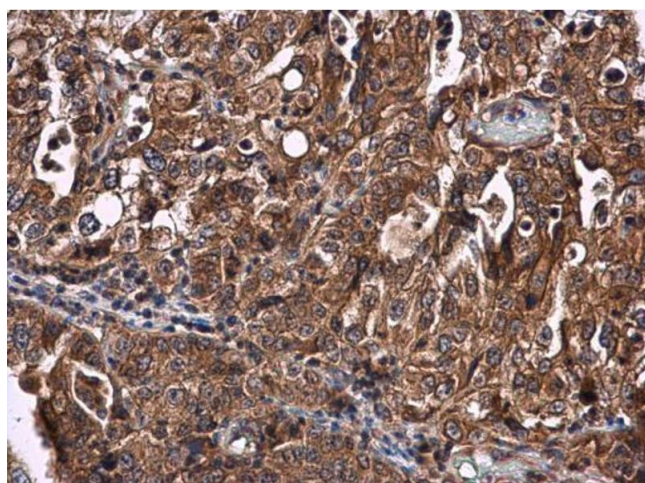
**Storage:** -20 °C

**Storage Comment:** Keep as concentrated solution. Aliquot and store at -20°C or below. Avoid multiple freeze-thaw cycles.



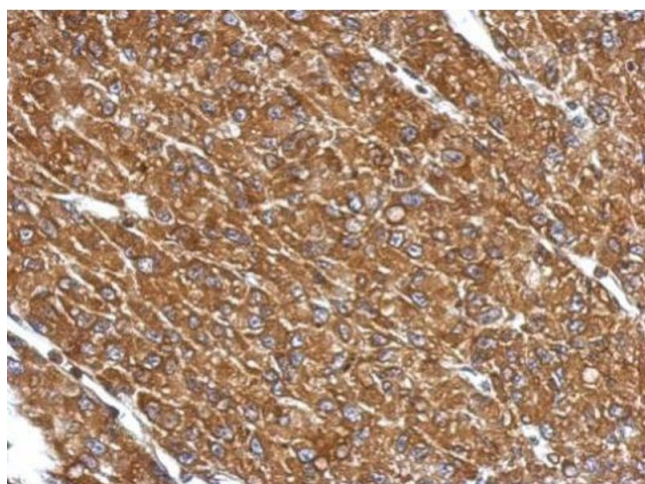
#### Western Blotting

**Image 1.** WB Image Sample (30 ug of whole cell lysate) A: A549 7.5% SDS PAGE antibody diluted at 1:1000



#### Immunohistochemistry

**Image 2.** IHC-P Image CYP27A1 antibody detects CYP27A1 protein at cytoplasm in human endometrial carcinoma by immunohistochemical analysis. Sample: Paraffin-embedded human endometrial carcinoma. CYP27A1 antibody, diluted at 1:500.



#### Immunohistochemistry

**Image 3.** IHC-P Image Immunohistochemical analysis of paraffin-embedded U87 xenograft, using CYP27A1, antibody at 1:500 dilution.

Please check the [product details page](#) for more images. Overall 5 images are available for ABIN2855688.