

Datasheet for ABIN2855695 **anti-BACE1 antibody**

3 Images



[Go to Product page](#)

Overview

Quantity:	100 µL
Target:	BACE1
Reactivity:	Human
Host:	Rabbit
Clonality:	Polyclonal
Application:	Western Blotting (WB), Immunohistochemistry (Paraffin-embedded Sections) (IHC (p))

Product Details

Immunogen:	Recombinant protein encompassing a sequence within the center region of human BACE1. The exact sequence is proprietary.
Isotype:	IgG
Cross-Reactivity:	Mouse, Rat
Characteristics:	Rabbit Polyclonal antibody to BACE1 (beta-site APP-cleaving enzyme 1) BACE1 antibody [N1C2]
Purification:	Purified by antigen-affinity chromatography.

Target Details

Target:	BACE1
Alternative Name:	beta-secretase 1 (BACE1 Products)
Background:	Cerebral deposition of amyloid beta peptide is an early and critical feature of Alzheimer's disease. Amyloid beta peptide is generated by proteolytic cleavage of amyloid precursor protein

Target Details

(APP) by two proteases, one of which is the protein encoded by this gene. The encoded protein, a member of the peptidase A1 protein family, is a type I integral membrane glycoprotein and aspartic protease that is found mainly in the Golgi. Four transcript variants encoding different isoforms have been described for this gene.

Cellular Localization: Membrane

Molecular Weight: 56 kDa

Gene ID: 23621

UniProt: [P56817](#)

Application Details

Application Notes: WB: 1:1000. IHC-P: 1:1000. Optimal dilutions/concentrations should be determined by the researcher. Not tested in other applications.

Restrictions: For Research Use only

Handling

Format: Liquid

Concentration: 1.91 mg/mL

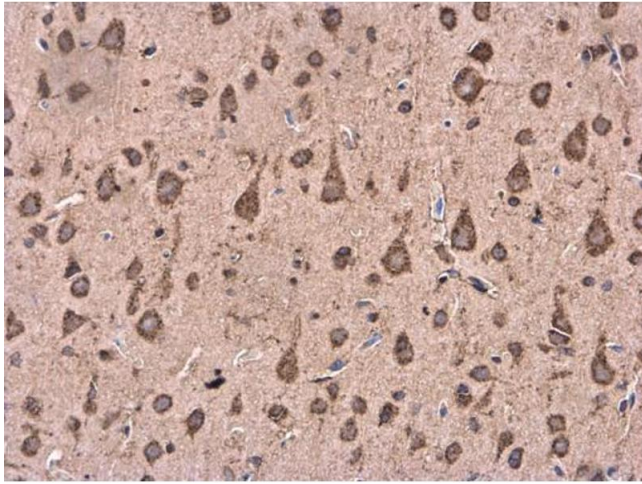
Buffer: 1XPBS (pH 7), 20 % Glycerol, 0.025 % ProClin 300

Preservative: ProClin

Precaution of Use: This product contains ProClin: a POISONOUS AND HAZARDOUS SUBSTANCE which should be handled by trained staff only.

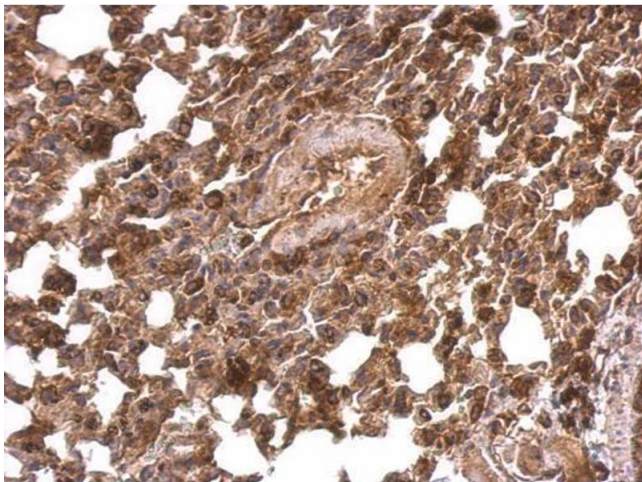
Storage: 4 °C,-20 °C

Storage Comment: Store as concentrated solution. Centrifuge briefly prior to opening vial. For short-term storage (1-2 weeks), store at 4°C. For long-term storage, aliquot and store at -20°C or below. Avoid multiple freeze-thaw cycles.



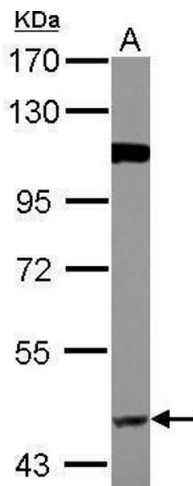
Immunohistochemistry

Image 1. IHC-P Image BACE1 antibody [N1C2] detects BACE1 protein at cytoplasm in Rat brain by immunohistochemical analysis. Sample: Paraffin-embedded Rat brain. BACE1 antibody [N1C2], diluted at 1:500.



Immunohistochemistry

Image 2. IHC-P Image BACE1 antibody [N1C2] detects BACE1 protein at cytosol and membrane on mouse lung by immunohistochemical analysis. Sample: Paraffin-embedded mouse lung. BACE1 antibody [N1C2], dilution: 1:500.



Western Blotting

Image 3. WB Image Sample (30 ug of whole cell lysate) A: A549 7.5% SDS PAGE antibody diluted at 1:1000