

Datasheet for ABIN2855697

anti-KRT17 antibody

8 Images

1 Publication

[Go to Product page](#)

Overview

Quantity:	100 µL
Target:	KRT17
Reactivity:	Human
Host:	Rabbit
Clonality:	Polyclonal
Conjugate:	This KRT17 antibody is un-conjugated
Application:	Western Blotting (WB), Immunofluorescence (IF), Immunohistochemistry (Paraffin-embedded Sections) (IHC (p)), Immunocytochemistry (ICC)

Product Details

Immunogen:	Recombinant protein encompassing a sequence within the center region of human Cytokeratin 17. The exact sequence is proprietary.
Isotype:	IgG
Cross-Reactivity:	Human, Mouse, Rat
Characteristics:	Rabbit Polyclonal antibody to Cytokeratin 17 (keratin 17) Cytokeratin 17 antibody
Purification:	Purified by antigen-affinity chromatography.

Target Details

Target:	KRT17
Alternative Name:	keratin 17 (KRT17 Products)

Target Details

Background: This gene encodes the type I intermediate filament chain keratin 17, expressed in nail bed, hair follicle, sebaceous glands, and other epidermal appendages. Mutations in this gene lead to Jackson-Lawler type pachyonychia congenita and steatocystoma multiplex.

Cellular Localization: Cytoplasm

Molecular Weight: 48 kDa

Gene ID: 3872

UniProt: [Q04695](#)

Application Details

Application Notes: WB: 1:5000-1:20000. ICC/IF: 1:100-1:1000. IHC-P: 1:100-1:1000. Optimal dilutions/concentrations should be determined by the researcher. Not tested in other applications.

Comment: Positive Control: Rat bladder

Restrictions: For Research Use only

Handling

Format: Liquid

Concentration: 1 mg/mL

Buffer: 1XPBS, 1 % BSA, 20 % Glycerol (pH 7), 0.01 % Thimerosal

Preservative: Thimerosal (Merthiolate)

Precaution of Use: This product contains Thimerosal (Merthiolate): a POISONOUS AND HAZARDOUS SUBSTANCE which should be handled by trained staff only.

Storage: 4 °C,-20 °C

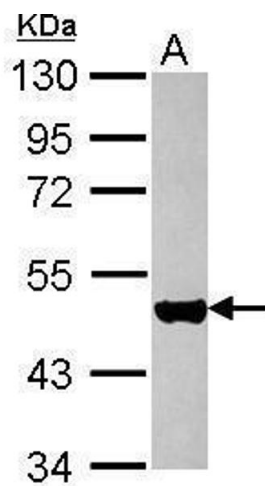
Storage Comment: Store as concentrated solution. Centrifuge briefly prior to opening vial. For short-term storage (1-2 weeks), store at 4°C. For long-term storage, aliquot and store at -20°C or below. Avoid multiple freeze-thaw cycles.

Publications

Product cited in: Yang, Chien, Lai, Su, Jan, Hsiao, Chen: "Monoamine Oxidase B Expression Correlates with a Poor Prognosis in Colorectal Cancer Patients and Is Significantly Associated with Epithelial-to-

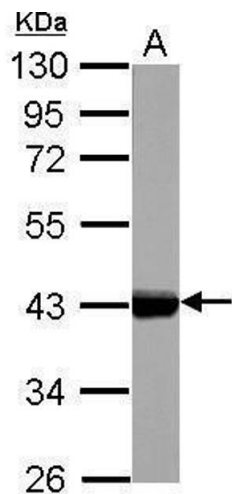
Mesenchymal Transition-Related Gene Signatures." in: **International journal of molecular sciences**, Vol. 21, Issue 8, (2020) ([PubMed](#)).

Images



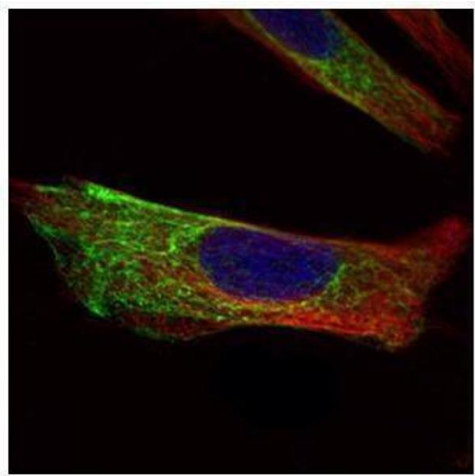
Western Blotting

Image 1. WB Image Sample (30 ug of whole cell lysate) A: HeLa 10% SDS PAGE antibody diluted at 1:10000



Western Blotting

Image 2. WB Image Sample (50 ug of whole cell lysate) A: Rat bladder 10% SDS PAGE antibody diluted at 1:10000



Immunofluorescence

Image 3. ICC/IF Image Confocal immunofluorescence analysis (Olympus FV10i) of paraformaldehyde-fixed HeLa, using Cytokeratin 17, antibody (Green) at 1:500 dilution. Alpha-tubulin filaments were labeled with (Red) at 1:2500.

Please check the [product details page](#) for more images. Overall 8 images are available for ABIN2855697.