

Datasheet for ABIN2855698

anti-SEPHS2 antibody**3** Images[Go to Product page](#)

Overview

Quantity:	100 µL
Target:	SEPHS2
Reactivity:	Human
Host:	Rabbit
Clonality:	Polyclonal
Conjugate:	This SEPHS2 antibody is un-conjugated
Application:	Western Blotting (WB), Immunohistochemistry (Paraffin-embedded Sections) (IHC (p)), Immunocytochemistry (ICC), Immunofluorescence (IF)

Product Details

Immunogen:	Recombinant protein encompassing a sequence within the center region of human SEPHS2. The exact sequence is proprietary.
Isotype:	IgG
Cross-Reactivity:	Human
Characteristics:	Rabbit Polyclonal antibody to SEPHS2 (selenophosphate synthetase 2) SEPHS2 antibody
Purification:	Purified by antigen-affinity chromatography.

Target Details

Target:	SEPHS2
Alternative Name:	selenophosphate synthetase 2 (SEPHS2 Products)

Target Details

Background:	<p>This gene encodes an enzyme that synthesizes selenophosphate from selenide and ATP. Selenophosphate is the selenium donor used to synthesize selenocysteine, which is co-translationally incorporated into selenoproteins at in-frame UGA codons. This protein itself contains a selenocysteine residue in its predicted active site. The 3' UTR of the gene has a stem-loop secondary structure called a selenocysteine insertion sequence (SECIS) element, which allows UGA to direct the incorporation of selenocysteine rather than signal a translational stop. Alternatively spliced transcripts have been identified, but their biological validity has not been determined.</p>
-------------	--

Molecular Weight:	47 kDa
-------------------	--------

Gene ID:	22928
----------	-------

UniProt:	Q99611
----------	------------------------

Application Details

Application Notes:	WB: 1:500-1:3000. ICC/IF: 1:100-1:1000. IHC-P: 1:100-1:1000. Optimal dilutions/concentrations should be determined by the researcher. Not tested in other applications.
--------------------	---

Comment:	Positive Control: H1299
----------	-------------------------

Restrictions:	For Research Use only
---------------	-----------------------

Handling

Format:	Liquid
---------	--------

Concentration:	0.74 mg/mL
----------------	------------

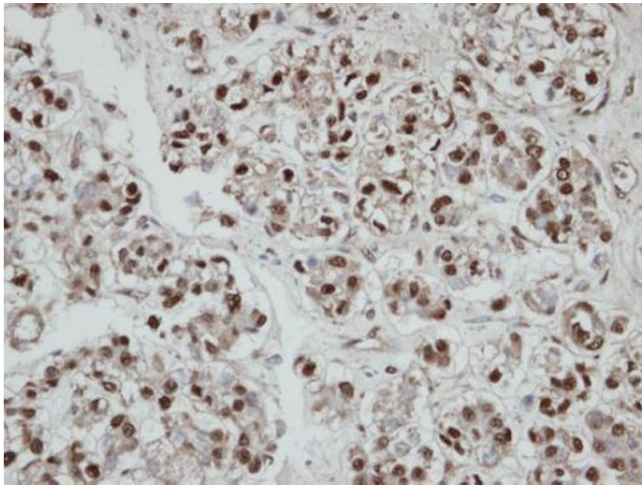
Buffer:	0.1M Tris-Glycine (pH 7), 10 % Glycerol, 0.01 % Thimerosal
---------	---

Preservative:	Thimerosal (Merthiolate)
---------------	--------------------------

Precaution of Use:	This product contains Thimerosal (Merthiolate): a POISONOUS AND HAZARDOUS SUBSTANCE which should be handled by trained staff only.
--------------------	--

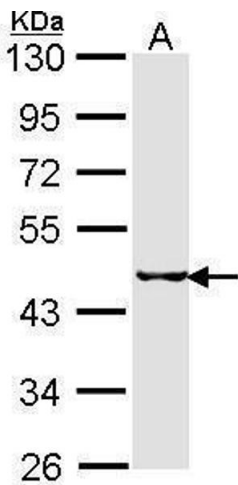
Storage:	4 °C,-20 °C
----------	-------------

Storage Comment:	Store as concentrated solution. Centrifuge briefly prior to opening vial. For short-term storage (1-2 weeks), store at 4°C. For long-term storage, aliquot and store at -20°C or below. Avoid multiple freeze-thaw cycles.
------------------	--



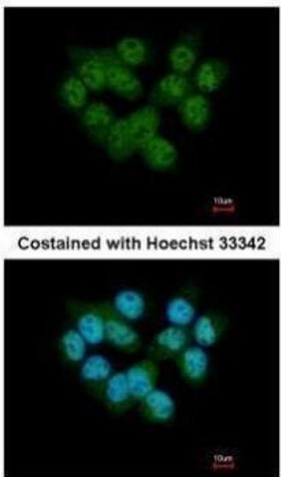
Immunohistochemistry

Image 1. IHC-P Image Immunohistochemical analysis of paraffin-embedded human ovarian cancer, using SEPHS2, antibody at 1:100 dilution.



Western Blotting

Image 2. WB Image Sample (30 ug of whole cell lysate) A: H1299 10% SDS PAGE SEPHS2 antibody antibody diluted at 1:1000



Immunofluorescence

Image 3. ICC/IF Image Immunofluorescence analysis of paraformaldehyde-fixed A431, using SEPHS2, antibody at 1:500 dilution.