

Datasheet for ABIN2855699
anti-DDI1 antibody (Center)

3 Images

[Go to Product page](#)

Overview

Quantity:	100 µL
Target:	DDI1
Binding Specificity:	Center
Reactivity:	Human
Host:	Rabbit
Clonality:	Polyclonal
Conjugate:	This DDI1 antibody is un-conjugated
Application:	Western Blotting (WB), Immunocytochemistry (ICC), Immunofluorescence (IF), Immunohistochemistry (Paraffin-embedded Sections) (IHC (p))

Product Details

Immunogen:	Recombinant protein encompassing a sequence within the center region of human DDI1. The exact sequence is proprietary.
Isotype:	IgG
Cross-Reactivity:	Monkey
Cross-Reactivity (Details):	Monkey (96 %)
Characteristics:	Rabbit polyclonal antibody to DDI1 (DDI1, DNA-damage inducible 1, homolog 1 (S. cerevisiae)) DDI1 antibody [N1C3]
Purification:	Purified by antigen-affinity chromatography.

Target Details

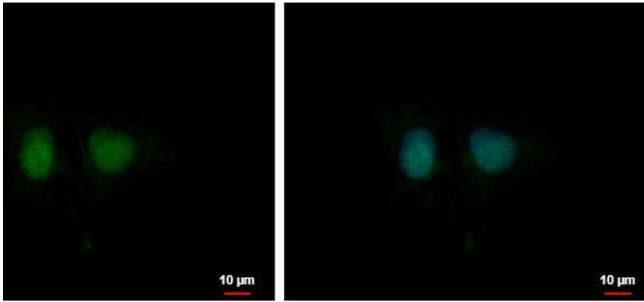
Target:	DDI1
Alternative Name:	DDI1 (DDI1 Products)
Molecular Weight:	44 kDa
Gene ID:	414301

Application Details

Application Notes:	Suggested dilution Reference ICC/IF 1:100-1:1000* IHC (Formalin-fixed paraffin-embedded sections) 1:100-1:1000* Western blot 1:500-1:3000* Not tested in other applications. *Optimal dilutions/concentrations should be determined by the researcher.Suggested dilutionReferenceICC/IF1:100-1:1000* IHC (Formalin-fixed paraffin-embedded sections)1:100-1:1000* Western blot1:500-1:3000*
Comment:	Positive Control: Molt-4
Restrictions:	For Research Use only

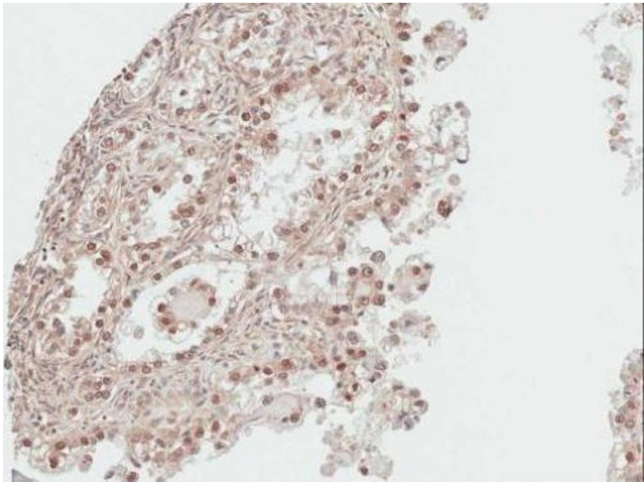
Handling

Format:	Liquid
Concentration:	1 mg/mL
Buffer:	0.1M Tris, 0.1M Glycine, 10 % Glycerol (pH 7). 0.01 % Thimerosal was added as a preservative.
Preservative:	Thimerosal (Merthiolate)
Precaution of Use:	This product contains Thimerosal (Merthiolate): a POISONOUS AND HAZARDOUS SUBSTANCE which should be handled by trained staff only.
Storage:	-20 °C
Storage Comment:	Keep as concentrated solution. Aliquot and store at -20°C or below. Avoid multiple freeze-thaw cycles.



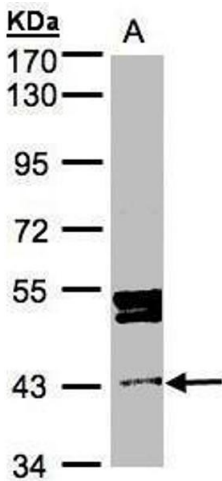
Immunofluorescence

Image 1. ICC/IF Image DDI1 antibody [N1C3] detects DDI1 protein at nucleus by immunofluorescent analysis. Sample: NT2D1 cells were fixed in 4% paraformaldehyde at RT for 15 min. Green: DDI1 protein stained by DDI1 antibody [N1C3] , diluted at 1:500. Blue: Hoechst 33342 staining. Scale bar = 10 μm.



Immunohistochemistry

Image 2. IHC-P Image Immunohistochemical analysis of paraffin-embedded human ovarian cancer, using DDI1, antibody at 1:100 dilution.



Western Blotting

Image 3. WB Image Sample(30 ug whole cell lysate) A:MOLT4 , 7.5% SDS PAGE antibody diluted at 1:1000