

Datasheet for ABIN2855703
anti-L3MBTL1 antibody (Center)

3 Images

1 Publication

[Go to Product page](#)

Overview

Quantity:	100 µL
Target:	L3MBTL1
Binding Specificity:	Center
Reactivity:	Human
Host:	Rabbit
Clonality:	Polyclonal
Conjugate:	This L3MBTL1 antibody is un-conjugated
Application:	Western Blotting (WB), Immunofluorescence (IF), Immunocytochemistry (ICC)

Product Details

Immunogen:	Recombinant protein encompassing a sequence within the center region of human L3MBTL. The exact sequence is proprietary.
Isotype:	IgG
Cross-Reactivity:	Mouse (Murine)
Cross-Reactivity (Details):	mouse (88 %)
Characteristics:	Rabbit polyclonal antibody to L3MBTL (l(3)mbt-like (Drosophila)) L3MBTL antibody
Purification:	Purified by antigen-affinity chromatography.

Target Details

Target:	L3MBTL1
Alternative Name:	L3MBTL (L3MBTL1 Products)
Background:	<p>This gene encodes the homolog of a protein identified in Drosophila as a suppressor of malignant transformation of neuroblasts and ganglion-mother cells in the optic centers of the brain. This gene product is localized to condensed chromosomes in mitotic cells.</p> <p>Overexpression of this gene in a glioma cell line results in improper nuclear segregation and cytokinesis producing multinucleated cells. Alternatively spliced transcript variants encoding different isoforms have been identified.</p> <p>Cellular Localization: Nucleus</p>
Molecular Weight:	84 kDa
Gene ID:	26013
Pathways:	Chromatin Binding

Application Details

Application Notes:	Suggested dilution Reference ICC/IF 1:100-1:1000* Western blot 1:500-1:3000* Not tested in other applications. *Optimal dilutions/concentrations should be determined by the researcher.Suggested dilutionReferenceICC/IF1:100-1:1000* Western blot1:500-1:3000*
Comment:	Positive Control: HeLaS3 , human L3MBTL-transfected 293T
Restrictions:	For Research Use only

Handling

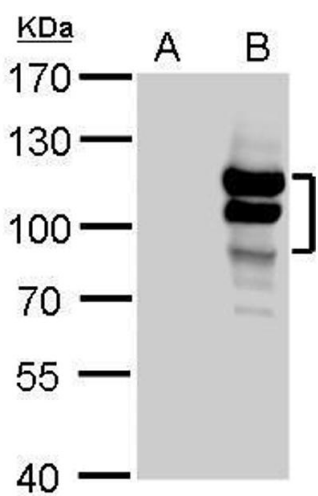
Format:	Liquid
Concentration:	1 mg/mL
Buffer:	0.1M Tris, 0.1M Glycine, 10 % Glycerol (pH 7). 0.01 % Thimerosal was added as a preservative.
Preservative:	Thimerosal (Merthiolate)
Precaution of Use:	This product contains Thimerosal (Merthiolate): a POISONOUS AND HAZARDOUS SUBSTANCE which should be handled by trained staff only.
Storage:	-20 °C
Storage Comment:	Keep as concentrated solution. Aliquot and store at -20°C or below. Avoid multiple freeze-thaw

cycles.

Publications

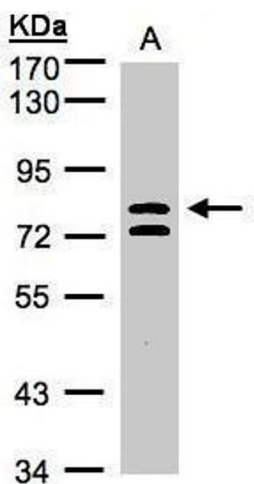
Product cited in: Wei, Ngo, Wu, Lee: "Phosphorylation of the Ndc80 complex protein, HEC1, by Nek2 kinase modulates chromosome alignment and signaling of the spindle assembly checkpoint." in: **Molecular biology of the cell**, Vol. 22, Issue 19, pp. 3584-94, (2012) ([PubMed](#)).

Images



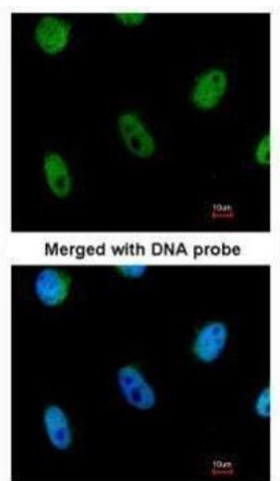
Western Blotting

Image 1. WB Image L3MBTL antibody detects L3MBTL protein by Western blot analysis. A. 30 µg 293T whole cell lysate/extract B. 30 µg whole cell lysate/extract of human L3MBTL-transfected 293T cells 7.5 % SDS-PAGE L3MBTL antibody , dilution: 1:5000



Western Blotting

Image 2. WB Image Sample(30 ug whole cell lysate) A:HeLa S3, 7.5% SDS PAGE antibody diluted at 1:1000



Immunofluorescence

Image 3. ICC/IF Image Immunofluorescence analysis of paraformaldehyde-fixed HeLa, using L3MBTL, antibody at 1:200 dilution.