

Datasheet for ABIN2855704

**anti-CCT4 antibody****1** Image[Go to Product page](#)

## Overview

Quantity:	100 µL
Target:	CCT4
Reactivity:	Human
Host:	Rabbit
Clonality:	Polyclonal
Conjugate:	This CCT4 antibody is un-conjugated
Application:	Western Blotting (WB)

## Product Details

Immunogen:	Recombinant protein encompassing a sequence within the center region of human TCP1 delta. The exact sequence is proprietary.
Isotype:	IgG
Cross-Reactivity:	Human
Characteristics:	Rabbit polyclonal antibody to TCP-1 delta (chaperonin containing TCP1, subunit 4 (delta)) TCP-1 delta antibody [N2C3]
Purification:	Purified by antigen-affinity chromatography.

## Target Details

Target:	CCT4
Alternative Name:	chaperonin containing TCP1 subunit 4 ( <a href="#">CCT4 Products</a> )

## Target Details

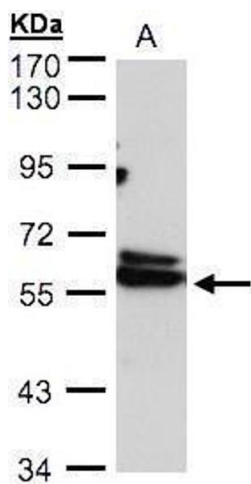
Background:	<p>The chaperonin containing TCP1 (MIM 186980) complex (CCT), also called the TCP1 ring complex, consists of 2 back-to-back rings, each containing 8 unique but homologous subunits, such as CCT4. CCT assists the folding of newly translated polypeptide substrates through multiple rounds of ATP-driven release and rebinding of partially folded intermediate forms. Substrates of CCT include the cytoskeletal proteins actin (see MIM 102560) and tubulin (see MIM 191130), as well as alpha-transducin (MIM 139330) (Won et al., 1998 [PubMed 9819444]).[supplied by OMIM]</p> <p>Cellular Localization: Cytoplasm , Melanosome</p>
Molecular Weight:	58 kDa
Gene ID:	10575
UniProt:	<a href="#">P50991</a>
Pathways:	<a href="#">Embryonic Body Morphogenesis</a>

## Application Details

Application Notes:	WB: 1:500-1:3000. Optimal dilutions/concentrations should be determined by the researcher. Not tested in other applications.
Comment:	Positive Control: 293T
Restrictions:	For Research Use only

## Handling

Format:	Liquid
Concentration:	0.59 mg/mL
Buffer:	0.1M Tris-Glycine ( pH 7), 10 % Glycerol, 0.01 % Thimerosal
Preservative:	Thimerosal (Merthiolate)
Precaution of Use:	This product contains Thimerosal (Merthiolate): a POISONOUS AND HAZARDOUS SUBSTANCE which should be handled by trained staff only.
Storage:	4 °C, -20 °C
Storage Comment:	Store as concentrated solution. Centrifuge briefly prior to opening vial. For short-term storage (1-2 weeks), store at 4°C. For long-term storage, aliquot and store at -20°C or below. Avoid multiple freeze-thaw cycles.



Western Blotting

**Image 1.** WB Image Sample(30 ug whole cell lysate) A:293T  
7.5% SDS PAGE antibody diluted at 1:500