



Datasheet for ABIN2855707
anti-ENO3 antibody



[Go to Product page](#)

2 Images

Overview

Quantity:	100 µL
Target:	ENO3
Reactivity:	Human
Host:	Rabbit
Clonality:	Polyclonal
Conjugate:	This ENO3 antibody is un-conjugated
Application:	Western Blotting (WB), Immunofluorescence (IF), Immunocytochemistry (ICC)

Product Details

Immunogen:	Recombinant protein encompassing a sequence within the center region of human ENO3. The exact sequence is proprietary.
Isotype:	IgG
Cross-Reactivity:	Human
Characteristics:	Rabbit Polyclonal antibody to ENO3 (enolase 3 (beta, muscle)) ENO3 antibody
Purification:	Purified by antigen-affinity chromatography.

Target Details

Target:	ENO3
Alternative Name:	enolase 3 (ENO3 Products)

Target Details

Background: This gene encodes one of the three enolase isoenzymes found in mammals. This isoenzyme, a homodimer, is found in skeletal muscle cells in the adult. A switch from alpha enolase to beta enolase occurs in muscle tissue during development in rodents. Mutations in this gene can be associated with metabolic myopathies that may result from decreased stability of the enzyme. Two transcripts have been identified for this gene that differ only in their 5' UTR.

Cellular Localization: Cytoplasm

Molecular Weight: 47 kDa

Gene ID: 2027

UniProt: [P13929](#)

Application Details

Application Notes: WB: 1:5000-1:20000. ICC/IF: 1:100-1:1000. Optimal dilutions/concentrations should be determined by the researcher. Not tested in other applications.

Comment: Positive Control: HepG2

Restrictions: For Research Use only

Handling

Format: Liquid

Concentration: 1 mg/mL

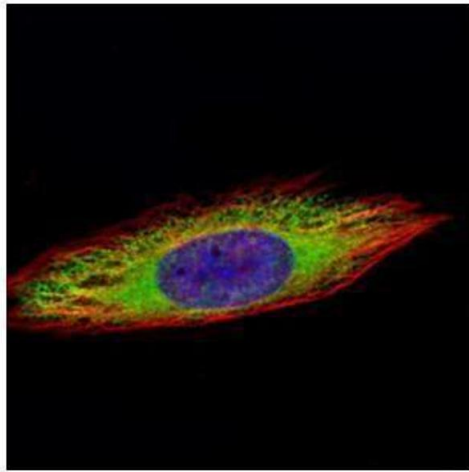
Buffer: 1XPBS (pH 7), 1 % BSA, 20 % Glycerol, 0.01 % Thimerosal

Preservative: Thimerosal (Merthiolate)

Precaution of Use: This product contains Thimerosal (Merthiolate): a POISONOUS AND HAZARDOUS SUBSTANCE which should be handled by trained staff only.

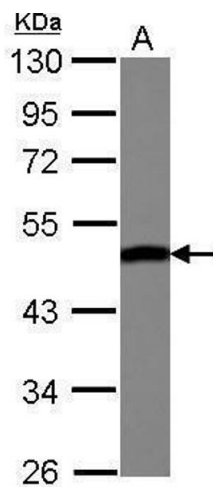
Storage: 4 °C,-20 °C

Storage Comment: Store as concentrated solution. Centrifuge briefly prior to opening vial. For short-term storage (1-2 weeks), store at 4°C. For long-term storage, aliquot and store at -20°C or below. Avoid multiple freeze-thaw cycles.



Immunofluorescence

Image 1. ICC/IF Image Confocal immunofluorescence analysis (Olympus FV10i) of methanol-fixed HeLa, using ENO3, antibody (Green) at 1:500 dilution. Alpha-tubulin filaments were labeled with (Red) at 1:2000.



Western Blotting

Image 2. WB Image Sample (30 ug of whole cell lysate) A: HepG2 10% SDS PAGE antibody diluted at 1:10000