

Datasheet for ABIN2855708  
**anti-NELL1 antibody (Center)**[Go to Product page](#)

## 2 Images

## Overview

Quantity:	100 µL
Target:	NELL1
Binding Specificity:	Center
Reactivity:	Human
Host:	Rabbit
Clonality:	Polyclonal
Conjugate:	This NELL1 antibody is un-conjugated
Application:	Western Blotting (WB), Immunohistochemistry (Paraffin-embedded Sections) (IHC (p))

## Product Details

Immunogen:	Recombinant protein encompassing a sequence within the center region of human NELL1. The exact sequence is proprietary.
Isotype:	IgG
Cross-Reactivity:	Mouse (Murine), Rat (Rattus)
Cross-Reactivity (Details):	Mouse (95 %), Rat (94 %)
Characteristics:	Rabbit Polyclonal antibody to NELL1 (NEL-like 1 (chicken)) NELL1 antibody
Purification:	Purified by antigen-affinity chromatography.

## Target Details

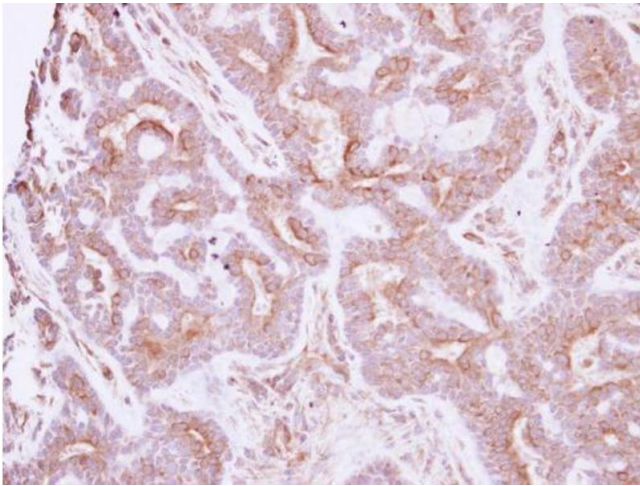
Target:	NELL1
Alternative Name:	NELL1 ( <a href="#">NELL1 Products</a> )
Background:	<p>This gene encodes a cytoplasmic protein that contains epidermal growth factor (EGF)-like repeats. The encoded heterotrimeric protein may be involved in cell growth regulation and differentiation. A similar protein in rodents is involved in craniosynostosis. Two transcript variants encoding different isoforms have been found for this gene.</p> <p>Cellular Localization: Secreted</p>
Molecular Weight:	90 kDa
Gene ID:	4745

## Application Details

Application Notes:	<p>Suggested dilution Reference IHC (Formalin-fixed paraffin-embedded sections) 1:100-1:1000* Western blot 1:1000-1:10000* Not tested in other applications. *Optimal dilutions/concentrations should be determined by the researcher.Suggested dilutionReferenceIHC (Formalin-fixed paraffin-embedded sections)1:100-1:1000* Western blot1:1000-1:10000*</p>
Comment:	Positive Control: NT2D1 , IMR32
Restrictions:	For Research Use only

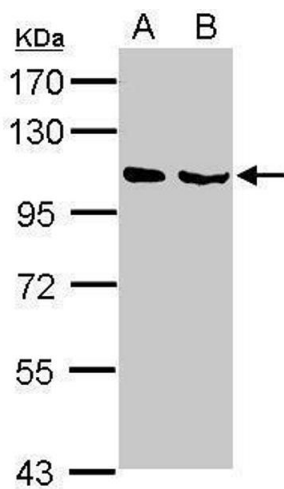
## Handling

Format:	Liquid
Concentration:	0.85 mg/mL
Buffer:	0.1M Tris, 0.1M Glycine, 10 % Glycerol ( pH 7). 0.01 % Thimerosal was added as a preservative.
Preservative:	Thimerosal (Merthiolate)
Precaution of Use:	This product contains Thimerosal (Merthiolate): a POISONOUS AND HAZARDOUS SUBSTANCE which should be handled by trained staff only.
Storage:	-20 °C
Storage Comment:	Keep as concentrated solution. Aliquot and store at -20°C or below. Avoid multiple freeze-thaw cycles.



### Immunohistochemistry

**Image 1.** IHC-P Image Immunohistochemical analysis of paraffin-embedded human breast cancer, using NELL1, antibody at 1:250 dilution.



### Western Blotting

**Image 2.** WB Image Sample (30 ug of whole cell lysate) A: NT2D1 B: IMR32 7.5% SDS PAGE antibody diluted at 1:5000