

Datasheet for ABIN2855711

anti-GCKR antibody**2** Images[Go to Product page](#)

Overview

Quantity:	100 µL
Target:	GCKR
Reactivity:	Human
Host:	Rabbit
Clonality:	Polyclonal
Conjugate:	This GCKR antibody is un-conjugated
Application:	Western Blotting (WB)

Product Details

Immunogen:	Recombinant protein encompassing a sequence within the center region of human GCKR. The exact sequence is proprietary.
Isotype:	IgG
Cross-Reactivity:	Human, Mouse
Characteristics:	Rabbit Polyclonal antibody to GCKR (glucokinase (hexokinase 4) regulator) GCKR antibody [N1C3]
Purification:	Purified by antigen-affinity chromatography.

Target Details

Target:	GCKR
Alternative Name:	glucokinase regulator (GCKR Products)

Target Details

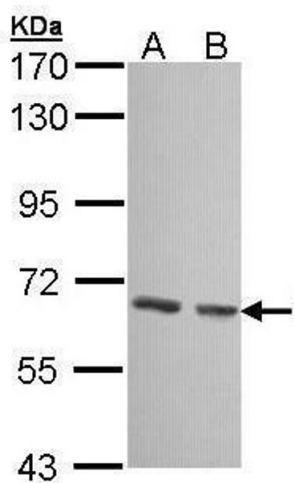
Background:	<p>This gene encodes a protein belonging to the GCKR subfamily of the SIS (Sugar ISomerase) family of proteins. The gene product is a regulatory protein that inhibits glucokinase in liver and pancreatic islet cells by binding non-covalently to form an inactive complex with the enzyme.</p> <p>This gene is considered a susceptibility gene candidate for a form of maturity-onset diabetes of the young (MODY).</p>
Molecular Weight:	69 kDa
Gene ID:	2646
UniProt:	Q14397
Pathways:	Carbohydrate Homeostasis , Regulation of Carbohydrate Metabolic Process , Protein targeting to Nucleus

Application Details

Application Notes:	<p>WB: 1:500-1:3000. Optimal dilutions/concentrations should be determined by the researcher.</p> <p>Not tested in other applications.</p>
Comment:	Positive Control: Mouse liver , 293T , A431
Restrictions:	For Research Use only

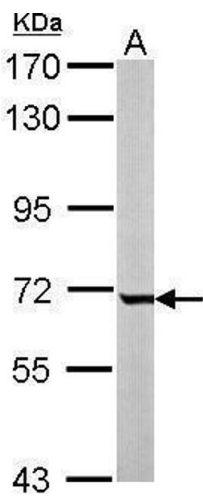
Handling

Format:	Liquid
Concentration:	1 mg/mL
Buffer:	0.1M Tris-Glycine (pH 7), 10 % Glycerol, 0.01 % Thimerosal
Preservative:	Thimerosal (Merthiolate)
Precaution of Use:	This product contains Thimerosal (Merthiolate): a POISONOUS AND HAZARDOUS SUBSTANCE which should be handled by trained staff only.
Storage:	4 °C,-20 °C
Storage Comment:	Store as concentrated solution. Centrifuge briefly prior to opening vial. For short-term storage (1-2 weeks), store at 4°C. For long-term storage, aliquot and store at -20°C or below. Avoid multiple freeze-thaw cycles.



Western Blotting

Image 1. WB Image Sample (30 ug of whole cell lysate) A: 293T B: A431 , 7.5% SDS PAGE antibody diluted at 1:1000



Western Blotting

Image 2. WB Image Sample (50 ug of whole cell lysate) A: mouse liver 7.5% SDS PAGE antibody diluted at 1:3000