

Datasheet for ABIN2855712

**anti-UGCGL2 antibody****3** Images[Go to Product page](#)

## Overview

Quantity:	100 µL
Target:	UGCGL2 (UGT2)
Reactivity:	Human
Host:	Rabbit
Clonality:	Polyclonal
Conjugate:	This UGCGL2 antibody is un-conjugated
Application:	Western Blotting (WB), Immunocytochemistry (ICC), Immunofluorescence (IF), Immunohistochemistry (Paraffin-embedded Sections) (IHC (p))

## Product Details

Immunogen:	Recombinant protein encompassing a sequence within the center region of human UGCGL2. The exact sequence is proprietary.
Isotype:	IgG
Cross-Reactivity:	Human
Characteristics:	Rabbit Polyclonal antibody to UGCGL2 (UDP-glucose:glycoprotein glucosyltransferase 2) UGCGL2 antibody [N3C2], Internal
Purification:	Purified by antigen-affinity chromatography.

## Target Details

Target:	UGCGL2 (UGT2)
Alternative Name:	UDP-glucose glycoprotein glucosyltransferase 2 ( <a href="#">UGT2 Products</a> )

## Target Details

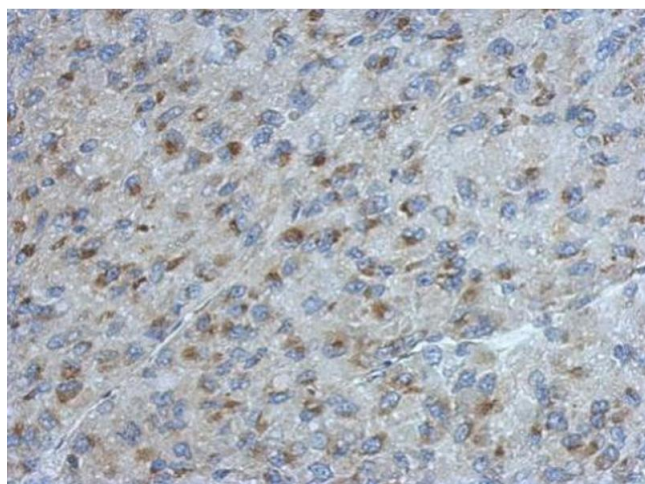
Background:	UDP-glucose:glycoprotein glucosyltransferase (UGT) is a soluble protein of the endoplasmic reticulum (ER) that selectively reglucosylates unfolded glycoproteins, thus providing quality control for protein transport out of the ER.[supplied by OMIM]  Cellular Localization: Endoplasmic reticulum lumen , Endoplasmic reticulum-Golgi intermediate compartment
Molecular Weight:	175 kDa
Gene ID:	55757
UniProt:	<a href="#">Q9NYU1</a>
Pathways:	<a href="#">SARS-CoV-2 Protein Interactome</a>

## Application Details

Application Notes:	WB: 1:500-1:3000. ICC/IF: 1:100-1:1000. IHC-P: 1:100-1:1000. Optimal dilutions/concentrations should be determined by the researcher. Not tested in other applications.
Comment:	Positive Control: HeLa
Restrictions:	For Research Use only

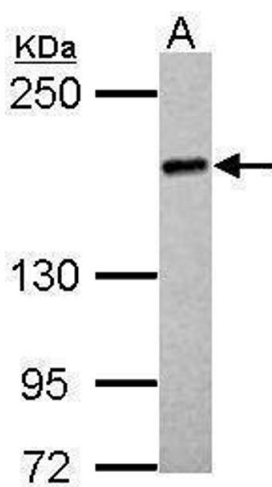
## Handling

Format:	Liquid
Concentration:	1 mg/mL
Buffer:	1XPBS ( pH 7), 20 % Glycerol, 0.01 % Thimerosal
Preservative:	Thimerosal (Merthiolate)
Precaution of Use:	This product contains Thimerosal (Merthiolate): a POISONOUS AND HAZARDOUS SUBSTANCE which should be handled by trained staff only.
Storage:	4 °C,-20 °C
Storage Comment:	Store as concentrated solution. Centrifuge briefly prior to opening vial. For short-term storage (1-2 weeks), store at 4°C. For long-term storage, aliquot and store at -20°C or below. Avoid multiple freeze-thaw cycles.



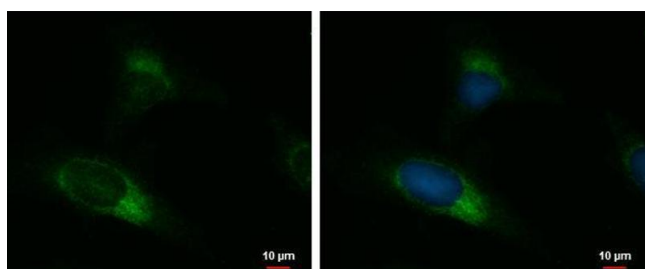
### Immunohistochemistry

**Image 1.** IHC-P Image Immunohistochemical analysis of paraffin-embedded U87 xenograft, using UGCGL2 antibody at 1:500 dilution.



### Western Blotting

**Image 2.** WB Image Sample (30 ug of whole cell lysate) A: HeLa 5% SDS PAGE antibody diluted at 1:1000



### Immunofluorescence

**Image 3.** ICC/IF Image UGCGL2 antibody [N3C2], Internal detects UGCGL2 protein at endoplasmic reticulum by immunofluorescent analysis. Sample: HeLa cells were fixed in ice-cold MeOH for 5 min. Green: UGCGL2 protein stained by UGCGL2 antibody [N3C2], Internal, diluted at 1:500. Blue: Hoechst 33342 staining.