

Datasheet for ABIN2855714
anti-PSMA5 antibody (Center)[Go to Product page](#)

4 Images

Overview

Quantity:	100 µL
Target:	PSMA5
Binding Specificity:	Center
Reactivity:	Human, Mouse
Host:	Rabbit
Clonality:	Polyclonal
Conjugate:	This PSMA5 antibody is un-conjugated
Application:	Western Blotting (WB), Immunofluorescence (IF), Immunohistochemistry (Paraffin-embedded Sections) (IHC (p)), Immunocytochemistry (ICC)

Product Details

Immunogen:	Recombinant protein encompassing a sequence within the center region of human PSMA5. The exact sequence is proprietary.
Isotype:	IgG
Cross-Reactivity:	Pig (Porcine), Rhesus Monkey, Cow (Bovine)
Cross-Reactivity (Details):	Pig (100 %), Rhesus Monkey (100 %), Bovine (100 %)
Characteristics:	Rabbit Polyclonal antibody to PSMA5 (proteasome (prosome, macropain) subunit, alpha type, 5) PSMA5 antibody
Purification:	Purified by antigen-affinity chromatography.

Target Details

Target:	PSMA5
Alternative Name:	PSMA5 (PSMA5 Products)
Background:	<p>The proteasome is a multicatalytic proteinase complex with a highly ordered ring-shaped 20S core structure. The core structure is composed of 4 rings of 28 non-identical subunits, 2 rings are composed of 7 alpha subunits and 2 rings are composed of 7 beta subunits. Proteasomes are distributed throughout eukaryotic cells at a high concentration and cleave peptides in an ATP/ubiquitin-dependent process in a non-lysosomal pathway. An essential function of a modified proteasome, the immunoproteasome, is the processing of class I MHC peptides. This gene encodes a member of the peptidase T1A family, that is a 20S core alpha subunit.</p> <p>Cellular Localization: Cytoplasm , Nucleus</p>
Molecular Weight:	26 kDa
Gene ID:	5686
Pathways:	Mitotic G1-G1/S Phases , DNA Replication , Synthesis of DNA

Application Details

Application Notes:	<p>Suggested dilution Reference ICC/IF 1:100-1:1000* IHC (Formalin-fixed paraffin-embedded sections) 1:100-1:1000* Western blot 1:500-1:10000* Not tested in other applications. *Optimal dilutions/concentrations should be determined by the researcher.Suggested dilutionReferenceICC/IF1:100-1:1000* IHC (Formalin-fixed paraffin-embedded sections)1:100-1:1000* Western blot1:500-1:10000*</p>
Comment:	Positive Control: 293T , A431 , H1299 , HeLaS3 , HepG2 , Molt-4 , Raji , mouse brain
Restrictions:	For Research Use only

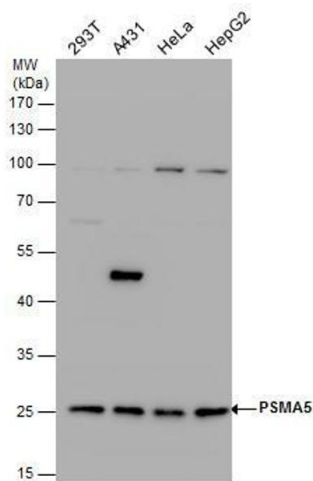
Handling

Format:	Liquid
Concentration:	0.96 mg/mL
Buffer:	0.1M Tris, 0.1M Glycine, 10 % Glycerol (pH 7). 0.01 % Thimerosal was added as a preservative.
Preservative:	Thimerosal (Merthiolate)
Precaution of Use:	This product contains Thimerosal (Merthiolate): a POISONOUS AND HAZARDOUS SUBSTANCE which should be handled by trained staff only.

Handling

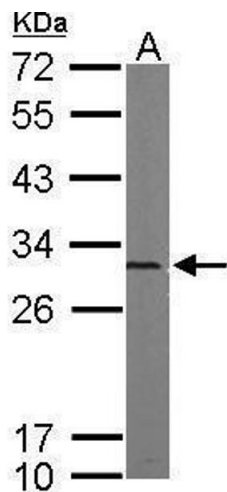
Storage:	-20 °C
Storage Comment:	Keep as concentrated solution. Aliquot and store at -20°C or below. Avoid multiple freeze-thaw cycles.

Validation report #104394 for Cleavage Under Targets and Release Using Nuclease (CUT&RUN)



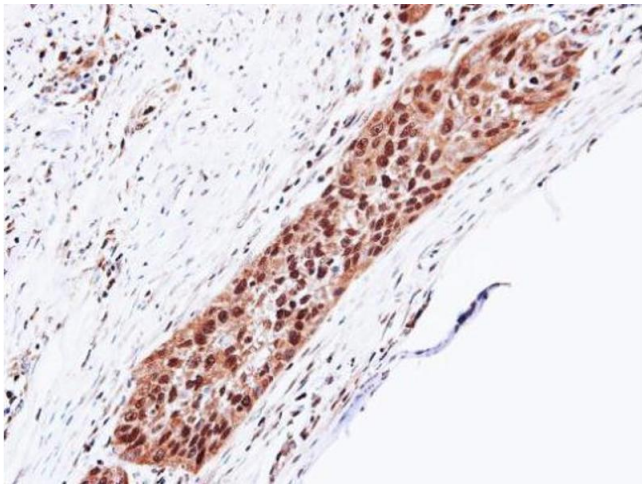
Western Blotting

Image 1. WB Image PSMA5 antibody detects PSMA5 protein by western blot analysis. Various whole cell extracts (30 µg) were separated by 12% SDS-PAGE, and the membrane was blotted with PSMA5 antibody , diluted by 1:1000.



Western Blotting

Image 2. WB Image Sample (50 ug of whole cell lysate) A: mouse brain 12% SDS PAGE antibody diluted at 1:5000



Immunohistochemistry

Image 3. IHC-P Image Immunohistochemical analysis of paraffin-embedded H1299 xenograft, using Proteasome 20S alpha 5, antibody at 1:100 dilution.

Please check the [product details page](#) for more images. Overall 4 images are available for ABIN2855714.