

Datasheet for ABIN2855715  
**anti-DNAJC1 antibody (Center)**[Go to Product page](#)

## 2 Images

## Overview

Quantity:	100 µL
Target:	DNAJC1
Binding Specificity:	Center
Reactivity:	Human
Host:	Rabbit
Clonality:	Polyclonal
Conjugate:	This DNAJC1 antibody is un-conjugated
Application:	Western Blotting (WB), Immunofluorescence (IF), Immunocytochemistry (ICC)

## Product Details

Immunogen:	Recombinant protein encompassing a sequence within the center region of human DNAJC1. The exact sequence is proprietary.
Isotype:	IgG
Characteristics:	Rabbit Polyclonal antibody to DNAJC1 (DnaJ (Hsp40) homolog, subfamily C, member 1) DNAJC1 antibody [C1C3]
Purification:	Purified by antigen-affinity chromatography.

## Target Details

Target:	DNAJC1
Alternative Name:	DNAJC1 ( <a href="#">DNAJC1 Products</a> )

## Target Details

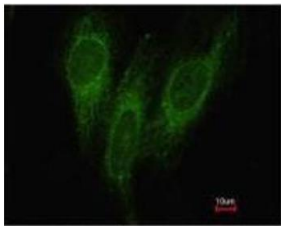
Background:	May modulate protein synthesis.  Cellular Localization: Endoplasmic reticulum membrane, Single-pass type I membrane protein , Nucleus membrane, Single-pass type I membrane protein , Microsome membrane, Single-pass type I membrane protein , Endoplasmic reticulum membrane , Nucleus membrane , Microsome membrane
Molecular Weight:	64 kDa
Gene ID:	64215
Pathways:	<a href="#">Chromatin Binding</a>

## Application Details

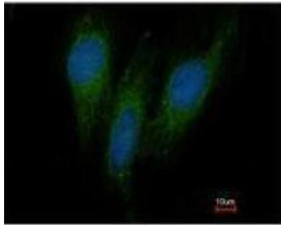
Application Notes:	Suggested dilution Reference ICC/IF 1:100-1:1000* Western blot 1:500-1:3000* Not tested in other applications. *Optimal dilutions/concentrations should be determined by the researcher.Suggested dilutionReferenceICC/IF1:100-1:1000* Western blot1:500-1:3000*
Comment:	Positive Control: 293T , A431 , H1299 , HeLaS3 , HepG2 , Molt-4 , Raji
Restrictions:	For Research Use only

## Handling

Format:	Liquid
Concentration:	1 mg/mL
Buffer:	0.1M Tris, 0.1M Glycine, 10 % Glycerol ( pH 7). 0.01 % Thimerosal was added as a preservative.
Preservative:	Thimerosal (Merthiolate)
Precaution of Use:	This product contains Thimerosal (Merthiolate): a POISONOUS AND HAZARDOUS SUBSTANCE which should be handled by trained staff only.
Storage:	-20 °C
Storage Comment:	Keep as concentrated solution. Aliquot and store at -20°C or below. Avoid multiple freeze-thaw cycles.

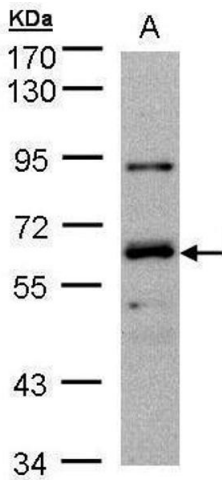


Costained with Hoechst 33342



Immunofluorescence

**Image 1.** ICC/IF Image Immunofluorescence analysis of methanol-fixed HeLa, using DNAJC1, antibody at 1:200 dilution.



Western Blotting

**Image 2.** WB Image Sample(30 ug whole cell lysate) A:Hep G2 , 7.5% SDS PAGE antibody diluted at 1:1000